

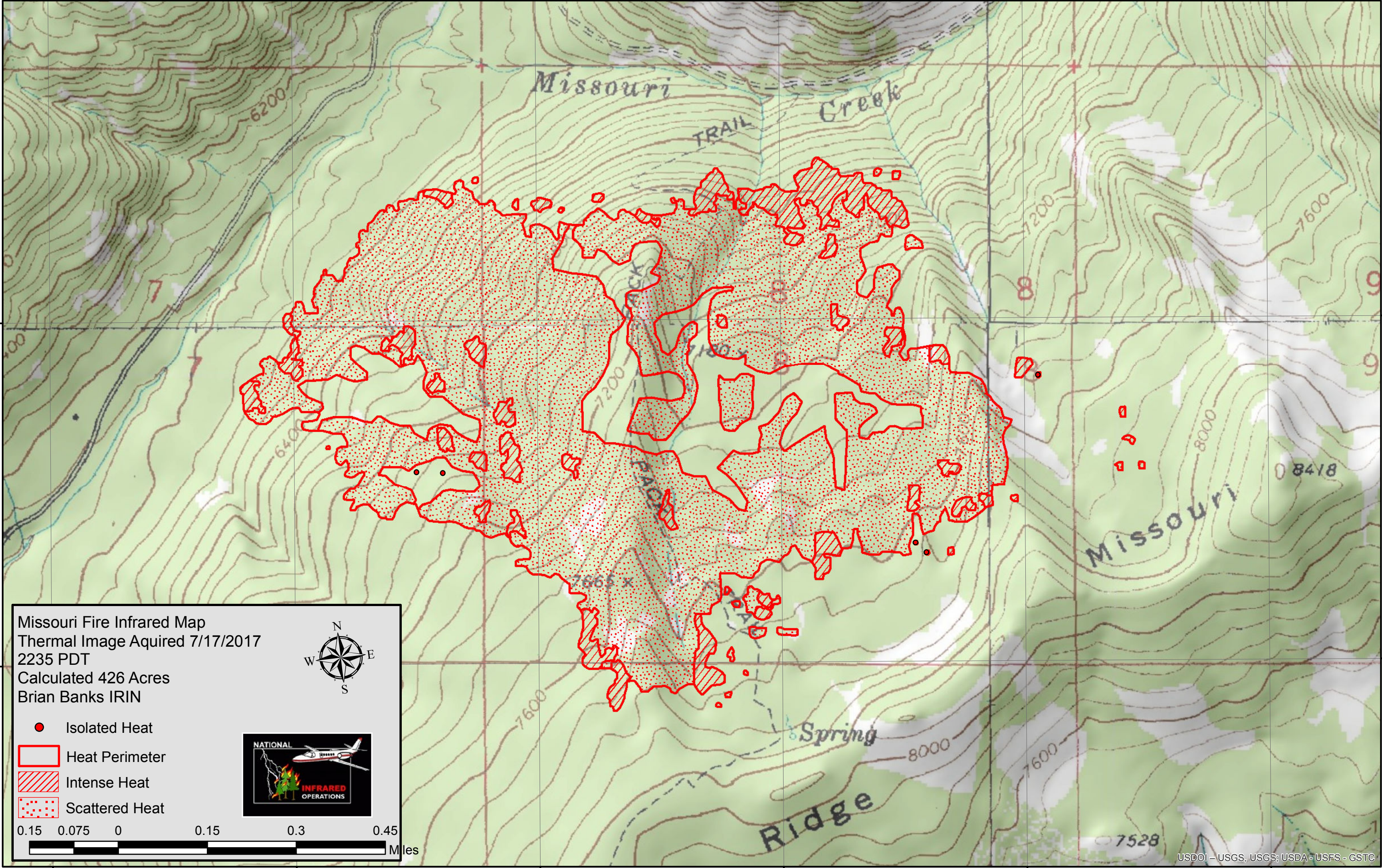
115°24'30"W 115°24'0"W 115°23'30"W 115°23'0"W 115°22'30"W 115°22'0"W

45°0'0"N

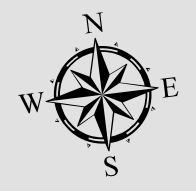
45°0'0"N

44°59'30"N

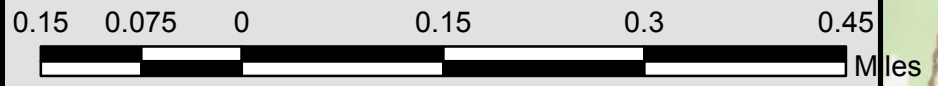
44°59'30"N



Missouri Fire Infrared Map
 Thermal Image Aquired 7/17/2017
 2235 PDT
 Calculated 426 Acres
 Brian Banks IRIN



- Isolated Heat
- Heat Perimeter
- Intense Heat
- Scattered Heat



115°24'30"W 115°24'0"W 115°23'30"W 115°23'0"W 115°22'30"W 115°22'0"W