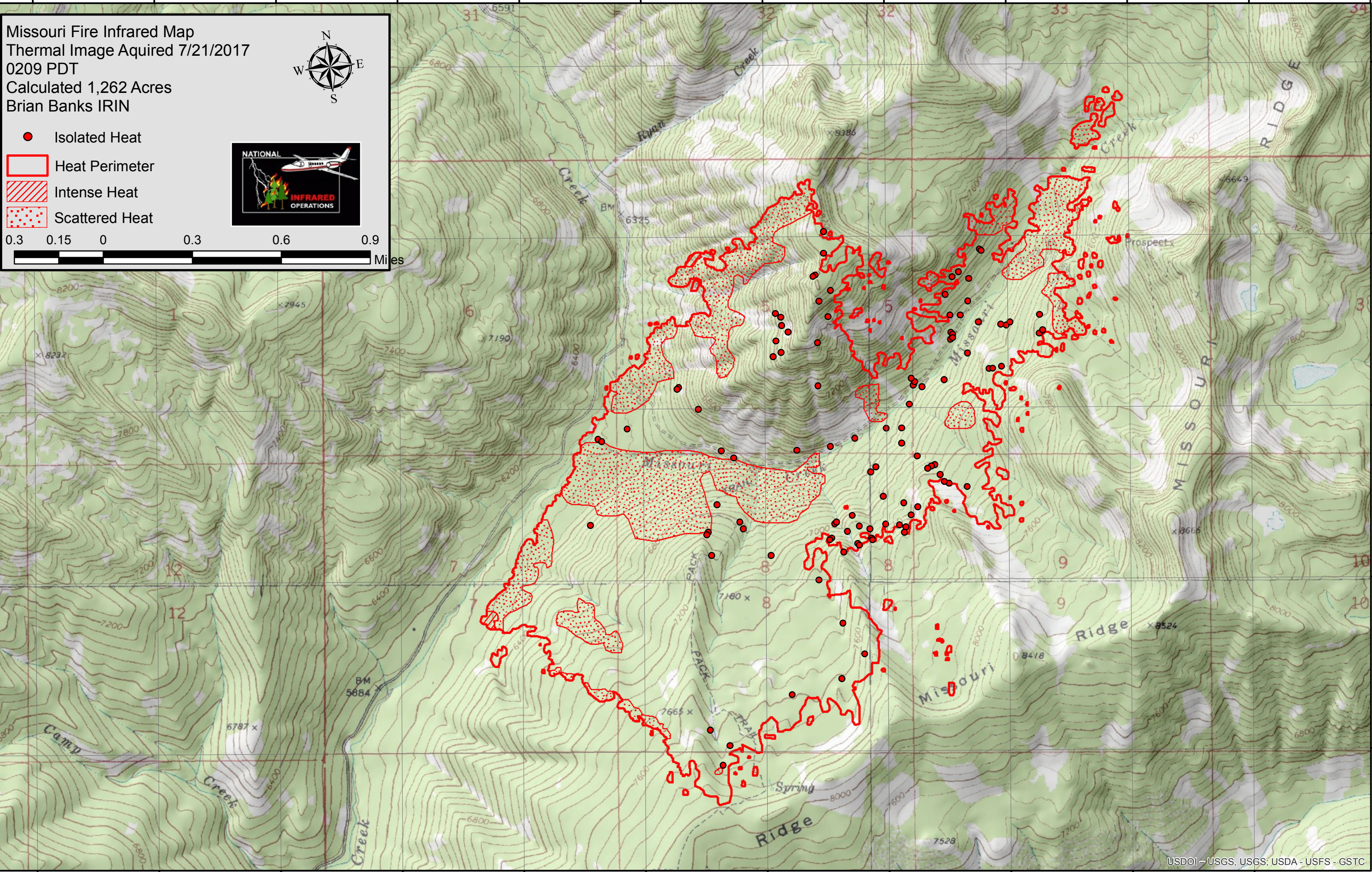
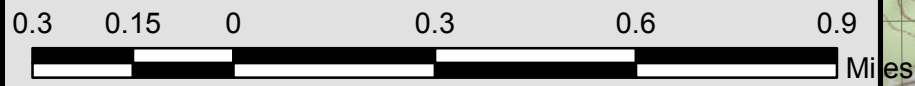


115°26'0"W 115°25'30"W 115°25'0"W 115°24'30"W 115°24'0"W 115°23'30"W 115°23'0"W 115°22'30"W 115°22'0"W 115°21'30"W 115°21'0"W 115°20'30"W

Missouri Fire Infrared Map
Thermal Image Aquired 7/21/2017
0209 PDT
Calculated 1,262 Acres
Brian Banks IRIN



- Isolated Heat
- Heat Perimeter
- Intense Heat
- Scattered Heat



115°26'0"W 115°25'30"W 115°25'0"W 115°24'30"W 115°24'0"W 115°23'30"W 115°23'0"W 115°22'30"W 115°22'0"W 115°21'30"W 115°21'0"W