



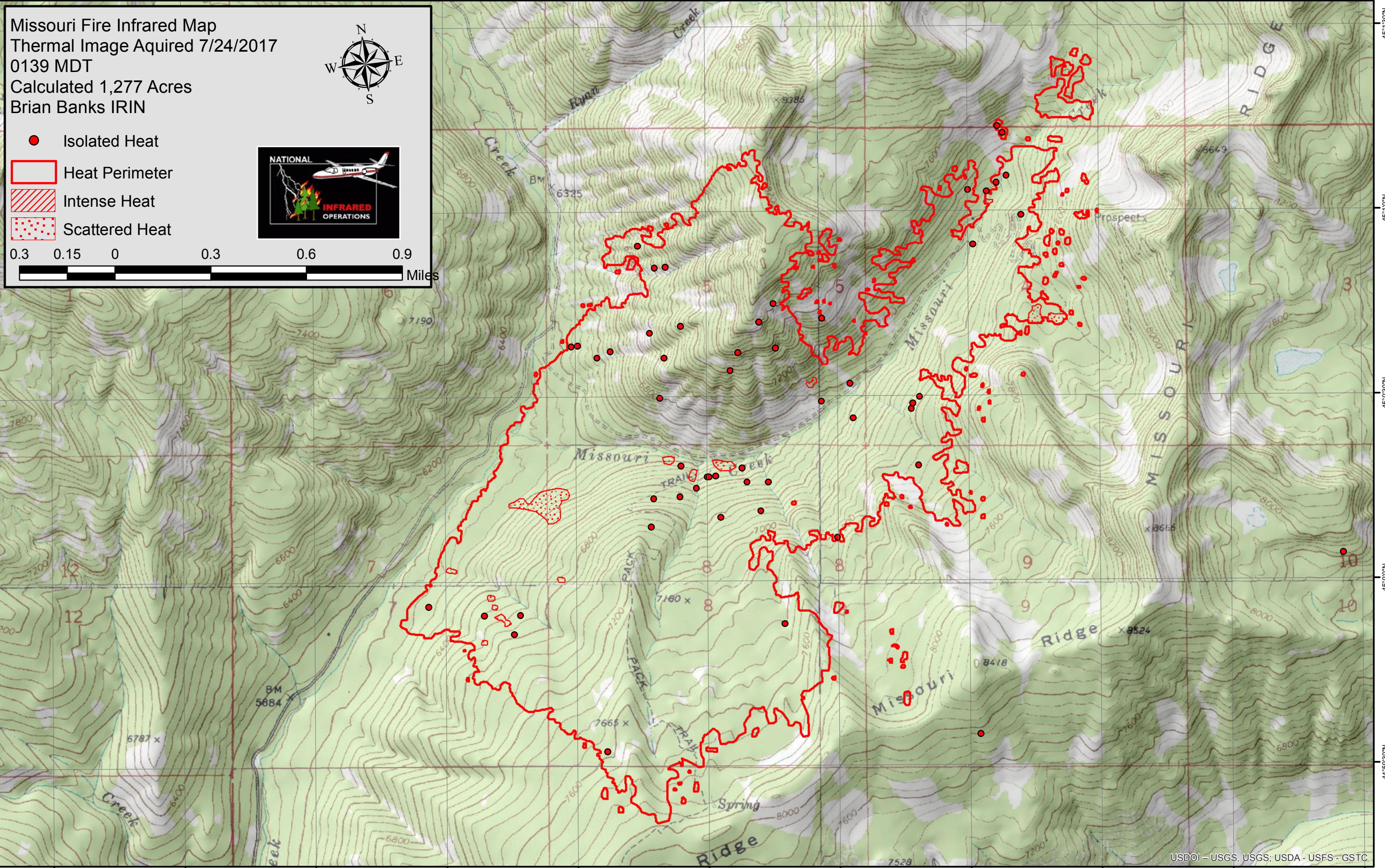
115°25'30"W 115°25'0"W 115°24'30"W 115°24'0"W 115°23'30"W 115°23'0"W 115°22'30"W 115°22'0"W 115°21'30"W 115°21'0"W 115°20'30"W

Missouri Fire Infrared Map
 Thermal Image Aquired 7/24/2017
 0139 MDT
 Calculated 1,277 Acres
 Brian Banks IRIN

- Isolated Heat
- Heat Perimeter
- Intense Heat
- Scattered Heat

0.3 0.15 0 0.3 0.6 0.9 Miles



115°25'30"W 115°25'0"W 115°24'30"W 115°24'0"W 115°23'30"W 115°23'0"W 115°22'30"W 115°22'0"W 115°21'30"W 115°21'0"W 115°20'30"W