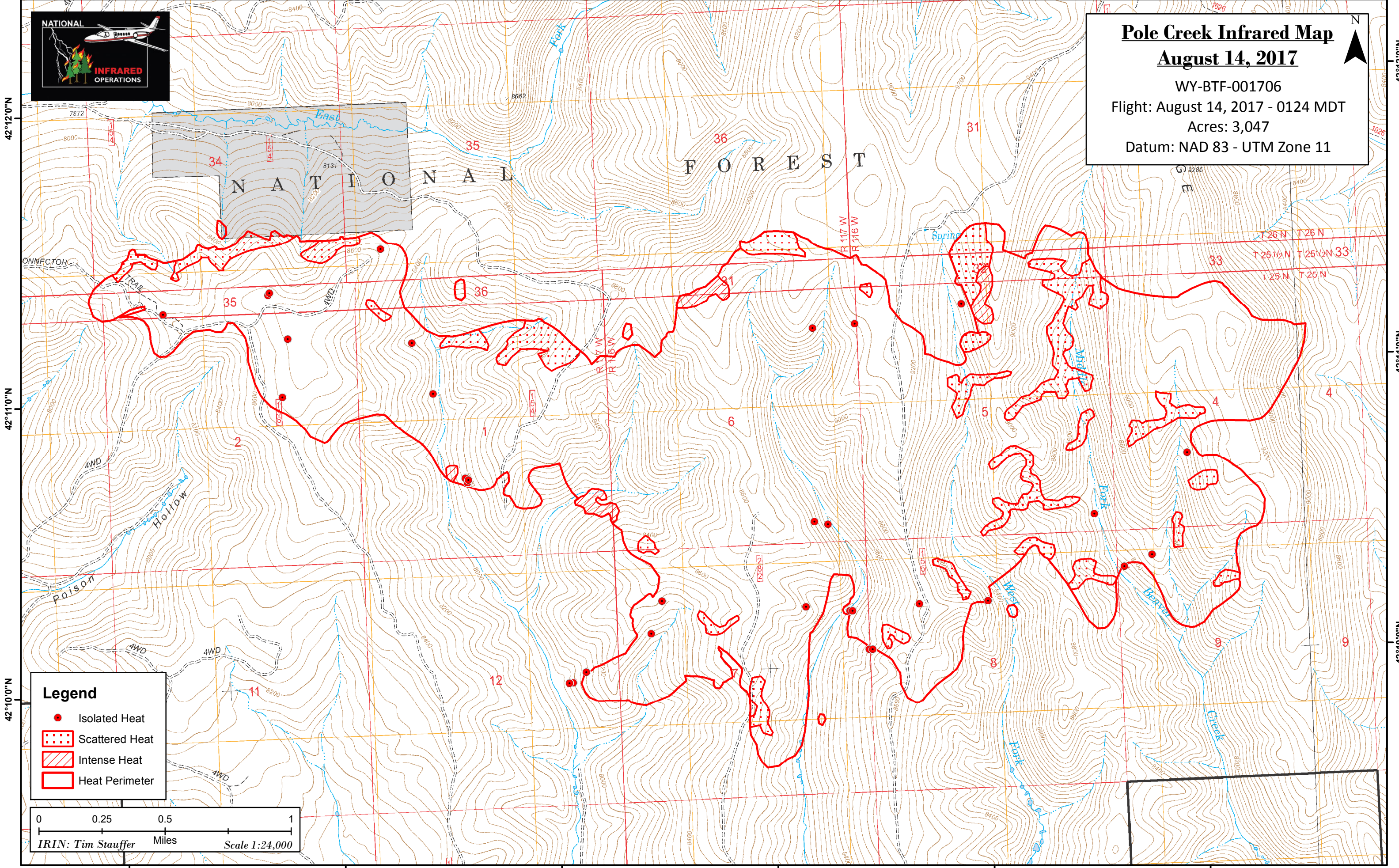


110°43'0"W 110°42'0"W 110°41'0"W 110°40'0"W 110°39'0"W 110°38'0"W



Pole Creek Infrared Map
August 14, 2017
WY-BTF-001706
Flight: August 14, 2017 - 0124 MDT
Acres: 3,047
Datum: NAD 83 - UTM Zone 11



Legend

- Isolated Heat
- Scattered Heat
- Intense Heat
- Heat Perimeter

0 0.25 0.5 1
IRIN: Tim Stauffer Miles Scale 1:24,000

110°43'0"W 110°42'0"W 110°41'0"W 110°40'0"W 110°39'0"W 110°38'0"W

42°12'0"N

42°11'0"N

42°10'0"N

42°12'0"N

42°11'0"N

42°10'0"N

