

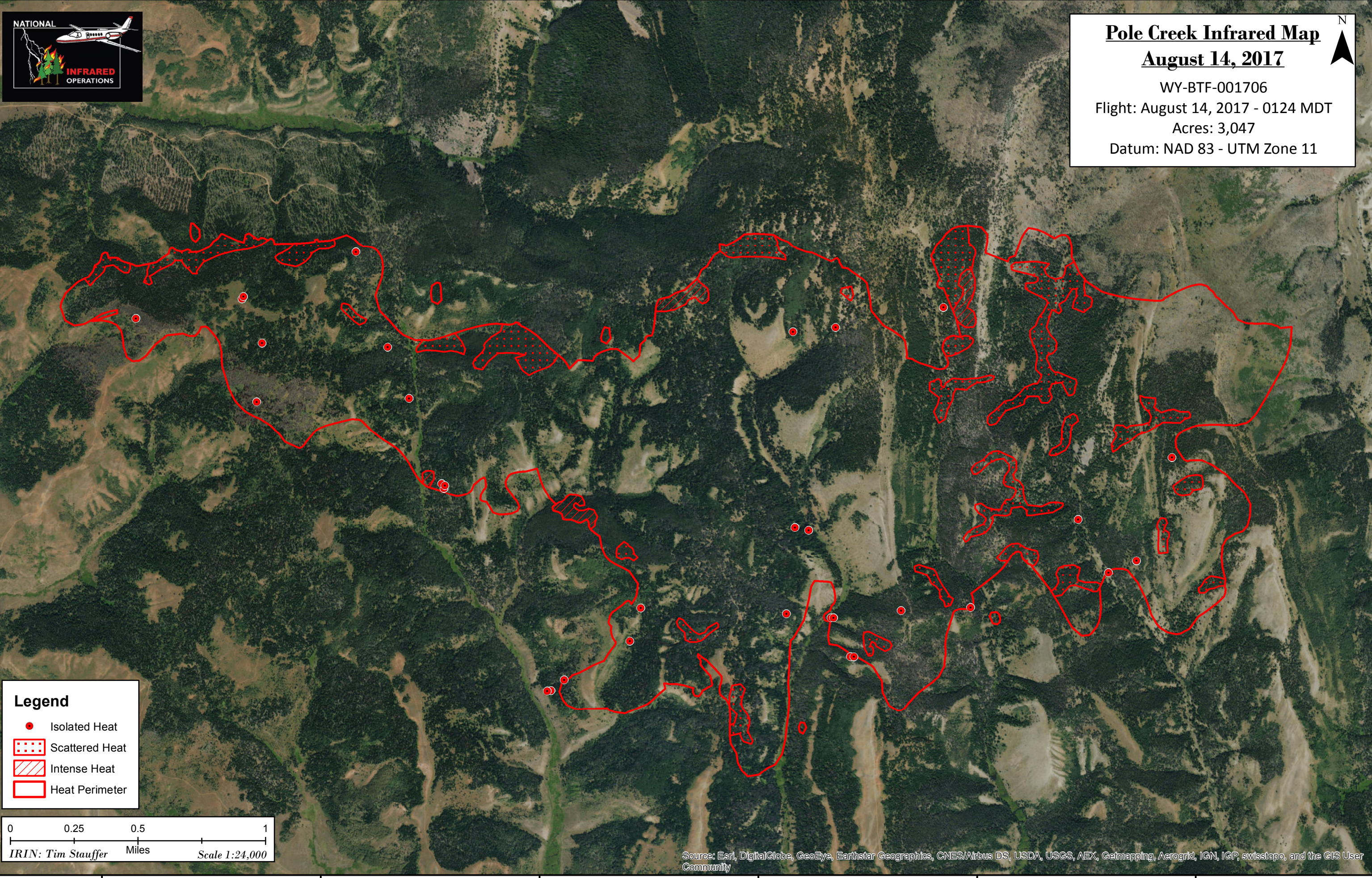
110°43'0"W 110°42'0"W 110°41'0"W 110°40'0"W 110°39'0"W 110°38'0"W



Pole Creek Infrared Map
August 14, 2017
WY-BTF-001706
Flight: August 14, 2017 - 0124 MDT
Acres: 3,047
Datum: NAD 83 - UTM Zone 11

42°12'0"N
42°11'0"N
42°10'0"N

42°12'0"N
42°11'0"N
42°10'0"N



Legend
● Isolated Heat
▤ Scattered Heat
▨ Intense Heat
□ Heat Perimeter

0 0.25 0.5 1
IRIN: Tim Stauffer Miles Scale 1:24,000

Source: Esri, DigitalGlobe, GeoEye, Earthstar Geographics, CNES/Airbus DS, USDA, USGS, AEX, Getmapping, Aerogrid, IGN, IGP, swisstopo, and the GIS User Community

110°43'0"W 110°42'0"W 110°41'0"W 110°40'0"W 110°39'0"W 110°38'0"W