

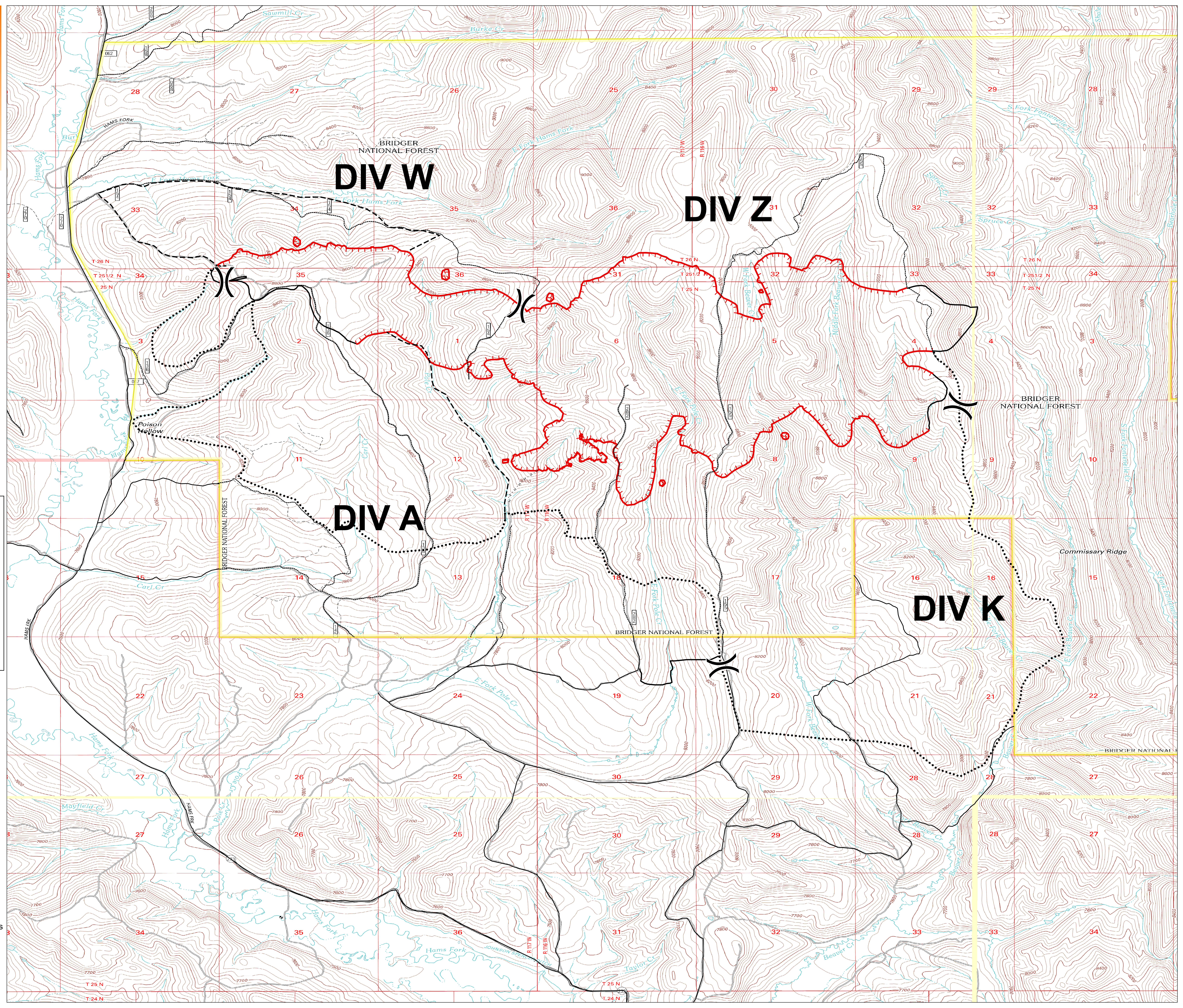
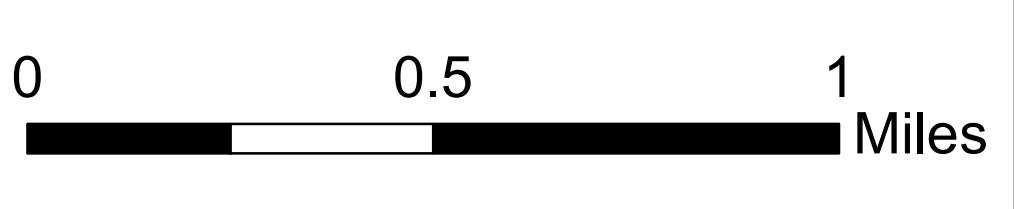
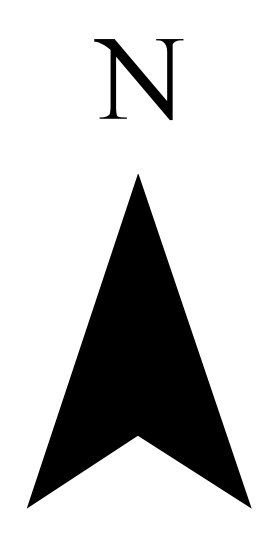
Public Information
Pole Creek
WY-BTF-001706
8/15/2017

3,030 acres
as of 08/14/2017 at 0124 HRS



Legend

- Division Break
- Uncontrolled Fire Edge
- Completed Line
- Completed Hand Line
- Planned Fire Line
- Planned Secondary Line
- HIGH CLEARANCE ROAD
- ALL VEHICLE ROAD
- PoleCreekClosureArea



UTM 11N, NAD83
8/14/2017, 01:24 hrs