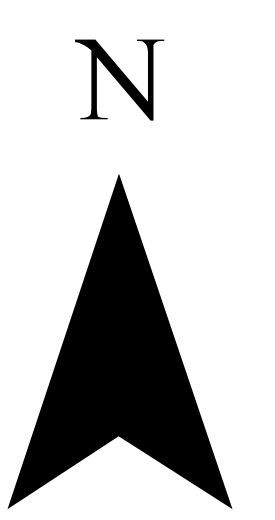
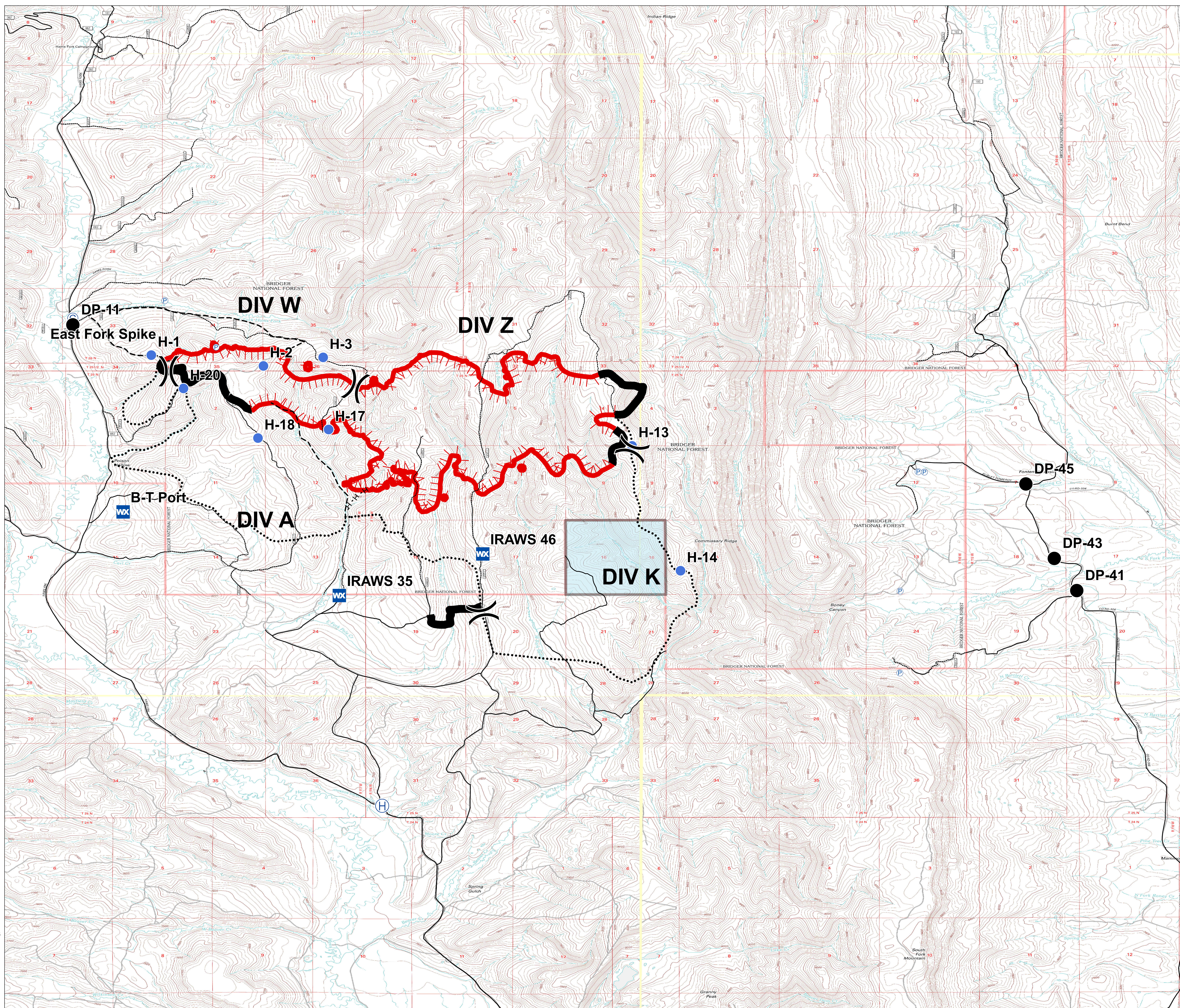


**Briefing**  
**Pole Creek**  
**WY-BTF\_001706**  
**8/15/2017**

3,030 acres  
as of 08/14/2017 at 0124 Hrs



- Camp
- Drop Point
- Helibase
- Helispot
- Mobile Weather Unit
- Pump
- Division Break
- HIGH CLEARANCE ROAD
- ALL VEHICLE ROAD
- Uncontrolled Fire Edge
- Completed Line
- H-H Completed Hand Line
- Planned Fire Line
- Planned Secondary Line
- State Trust Land



0 0.8 1.6 Miles

UTM 11N, NAD83  
8142017\_2134 hrs