

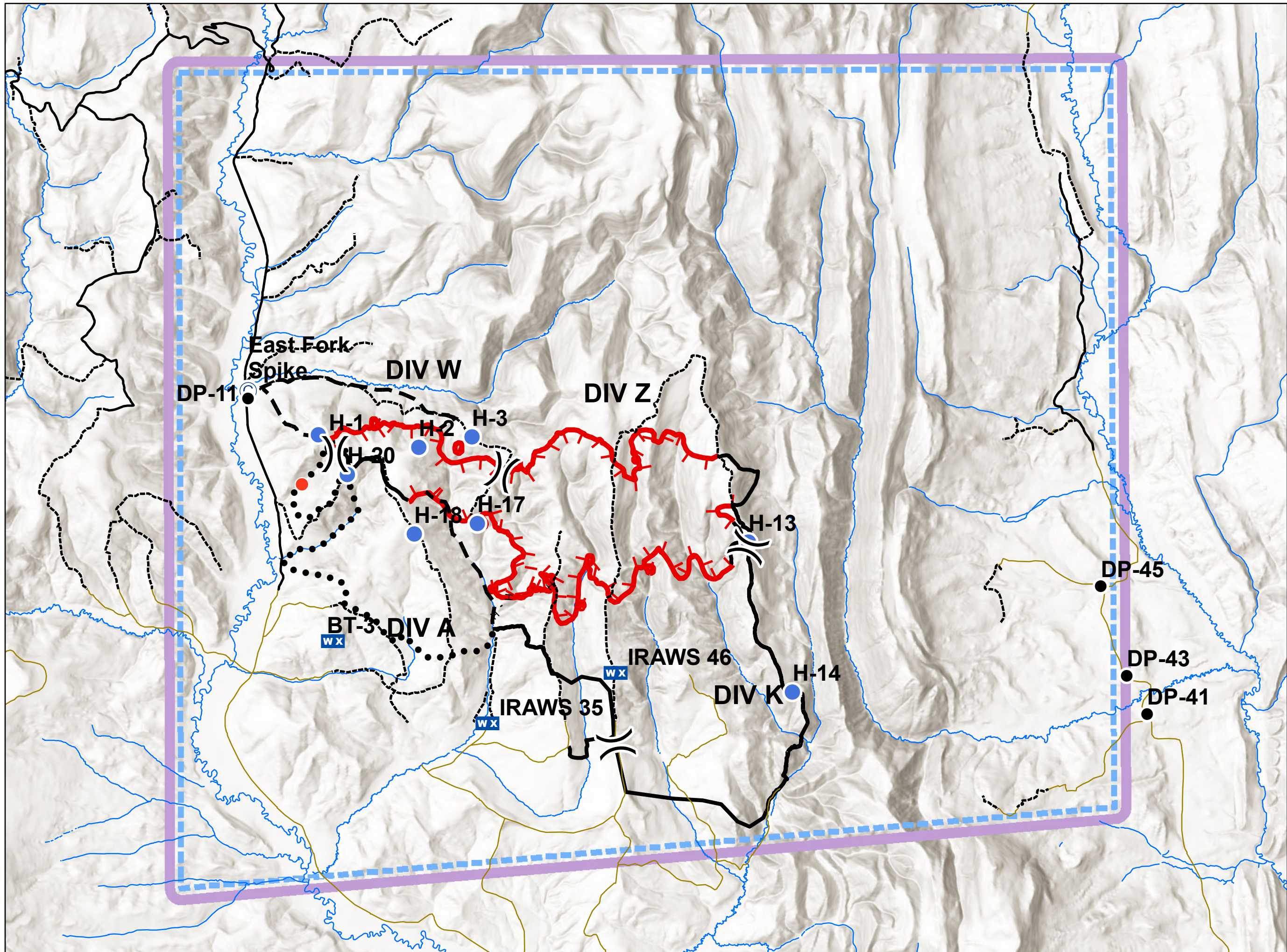
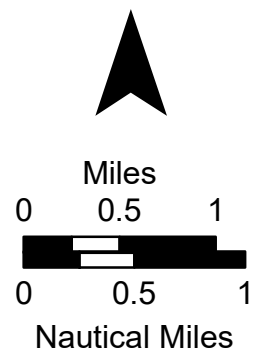
Air Operations

Pole Creek
WY-BTF-001706
08/15/2017
3,030 acres
as of 08/14/2017 0124 Hrs



- © Camp
- Drop Point
- Helispot
- Hot Spot
- WX Mobile Weather Unit
-) Division Break
- Uncontrolled Fire Edge
- Completed Line
- H - Completed Hand Line
- Planned Fire Line
- Planned Secondary Line
- TFR_7_5510
- All Vehicle Road
- High Clearance Vehicles

N



Label	Lat	Long
H-1	42° 11.480' N	110° 43.190' W
H-17	42° 10.600' N	110° 41.123' W
H-18	42° 10.540' N	110° 41.940' W
H-2	42° 11.381' N	110° 41.920' W
H-20	42° 11.120' N	110° 42.820' W
H-3	42° 11.450' N	110° 41.202' W
H-14	42° 8.966' N	110° 37.022' W
H-13	42° 10.423' N	110° 37.586' W
Helibase	42° 6.225' N	110° 40.500' W
IRAWS 46	42° 9.161' N	110° 39.327' W
IRAWS 35	42° 8.677' N	110° 40.998' W
B-T Port	42° 9.652' N	110° 43.519' W