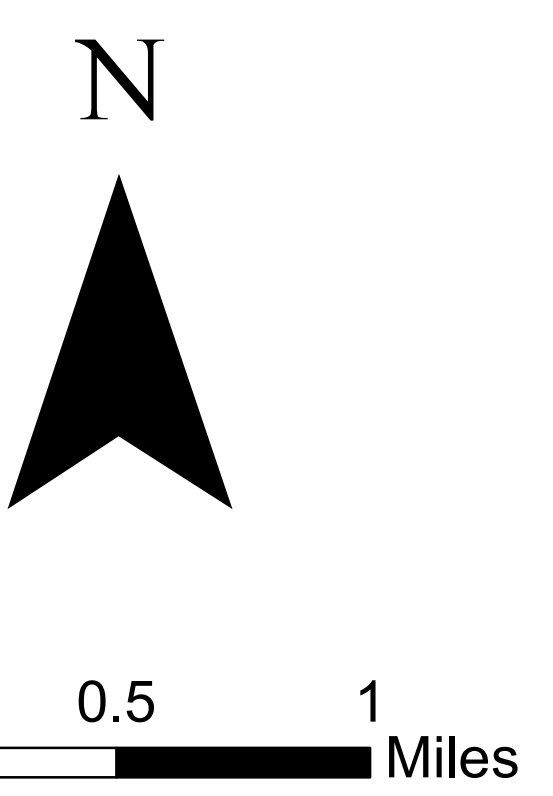
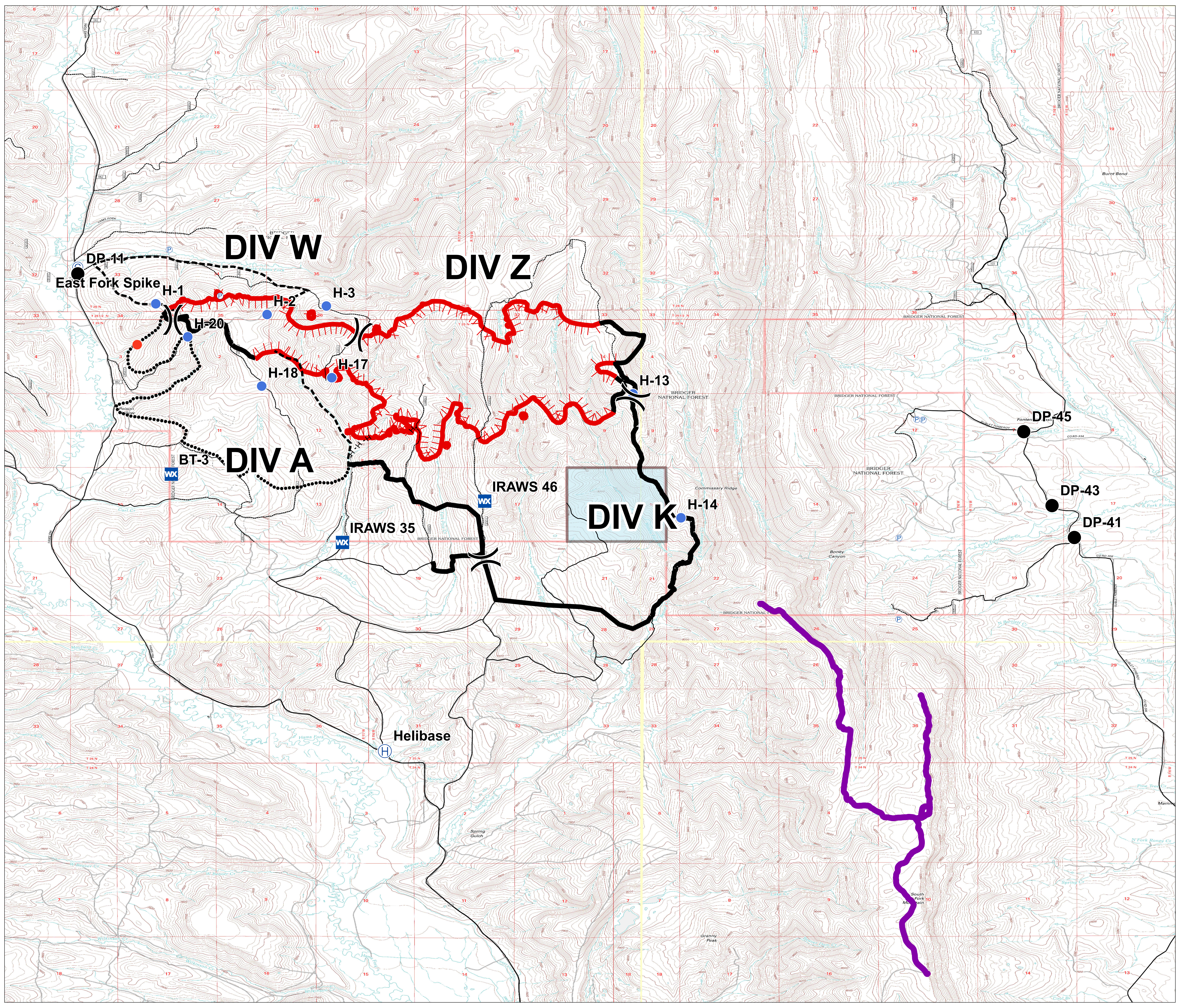


**Briefing**  
**Pole Creek**  
**WY-BTF\_001706**  
**8/16/2017**

3,030 acres  
as of 08/14/2017 at 0124 Hrs



- Ⓞ Camp
- Drop Point
- Ⓜ Helibase
- Helispot
- Hot Spot
- WX Mobile Weather Unit
- Ⓟ Pump
- ) Division Break
- Whitebark Pine
- HIGH CLEARANCE ROAD
- ALL VEHICLE ROAD
- Uncontrolled Fire Edge
- Completed Line
- H-H Completed Hand Line
- Planned Fire Line
- ..... Planned Secondary Line
- State Trust Land



UTM 11N, NAD83  
8/15/2017, 2:55 PM