

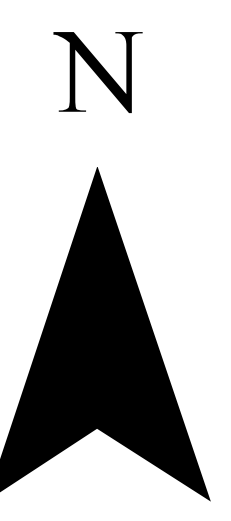
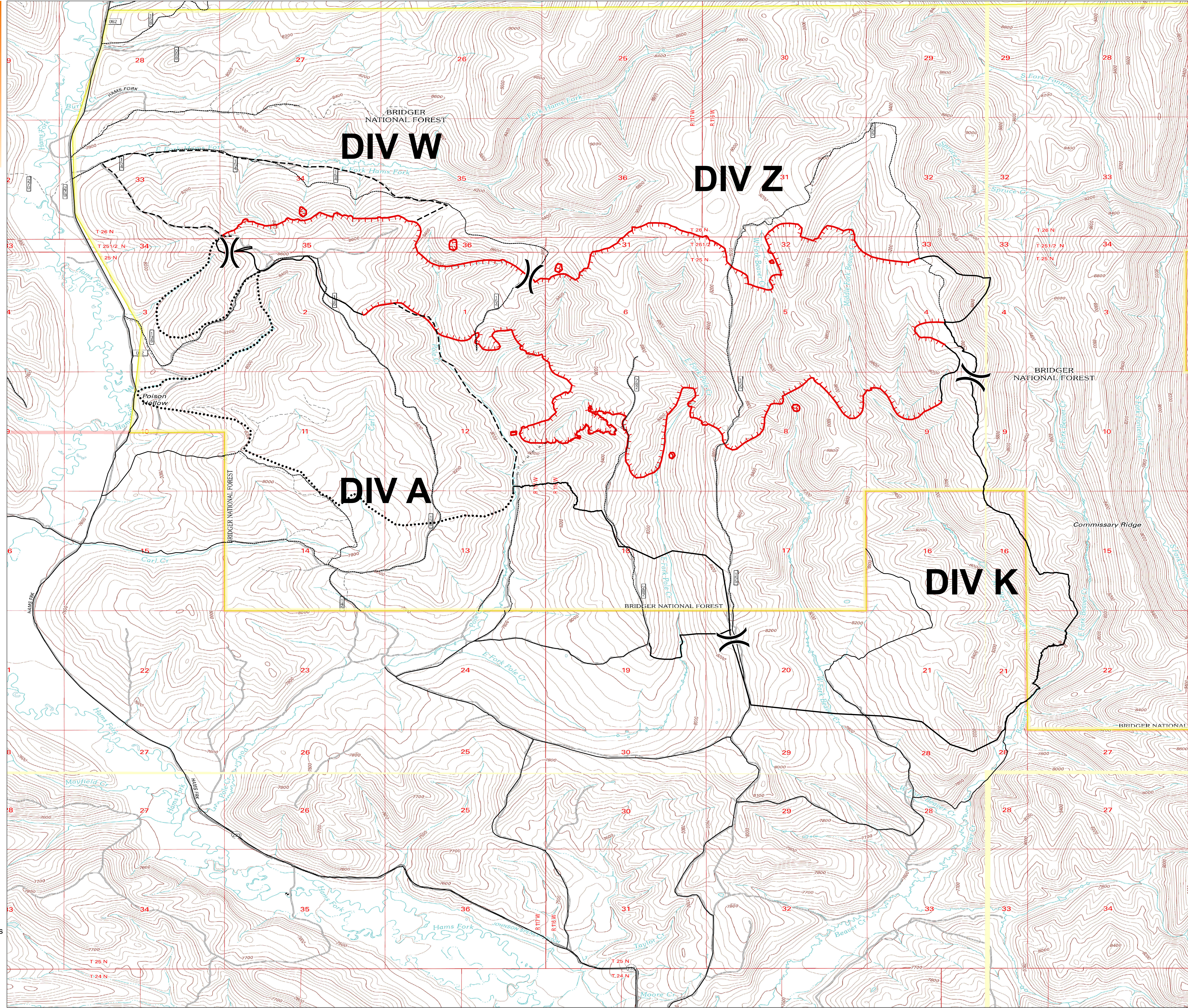
**Public Information**  
**Pole Creek**  
**WY-BTF-001706**  
**8/16/2017**

3,030 acres  
as of 08/14/2017 at 0124 HRS



**Legend**

- Division Break
- Uncontrolled Fire Edge
- Completed Line
- Completed Hand Line
- Planned Fire Line
- Planned Secondary Line
- HIGH CLEARANCE ROAD
- ALL VEHICLE ROAD
- PoleCreekClosureArea



0 0.5 1 Miles

UTM 11N, NAD83  
8/14/2017 01:24 hrs