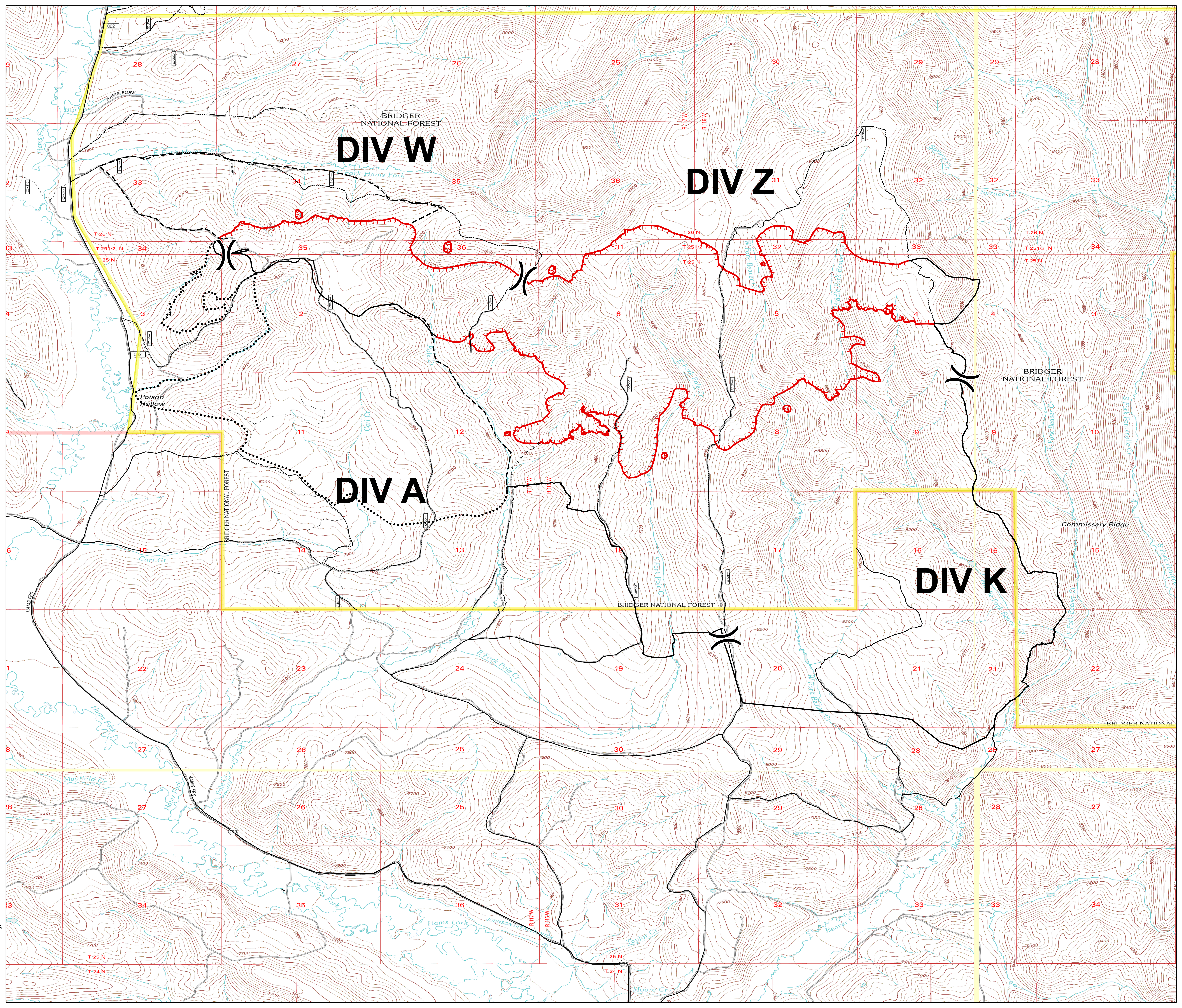


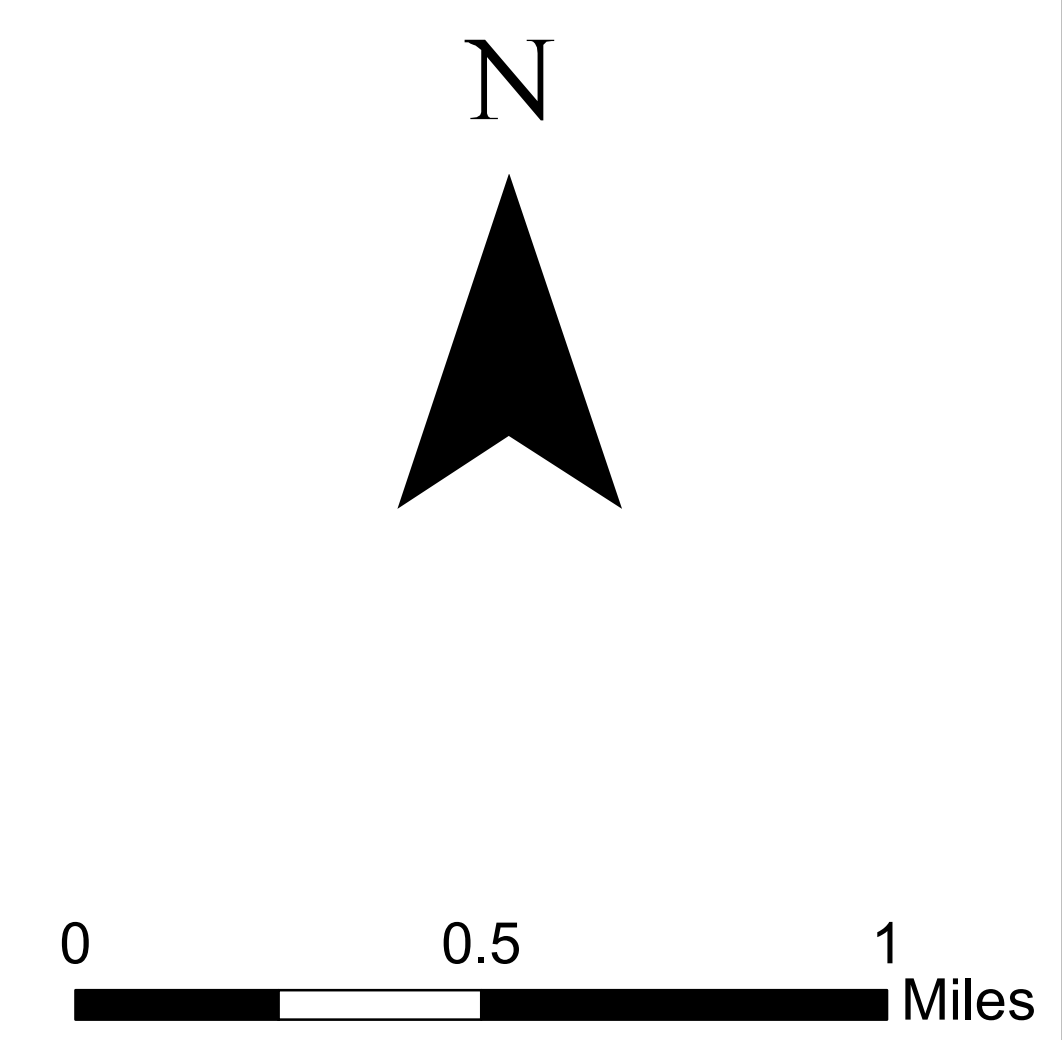
P.I.O. Public Information
Pole Creek
WY-BTF-001706
8/18/2017

2,738 acres
 as of 08/16/2017 at 2230 HRS



Legend

- Uncontrolled Fire Edge
- Completed Line
- Completed Hand Line
- Planned Fire Line
- Planned Secondary Line
- High Clearance Road
- All-Vehicle Road
- PoleCreekClosureArea



UTM 11N, NAD83
 8172017, 2118 NS