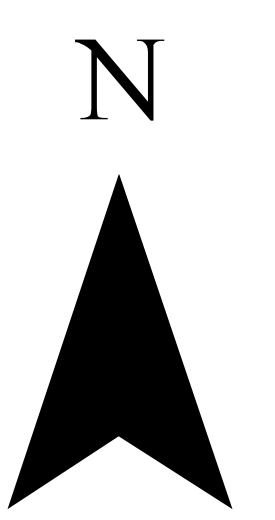
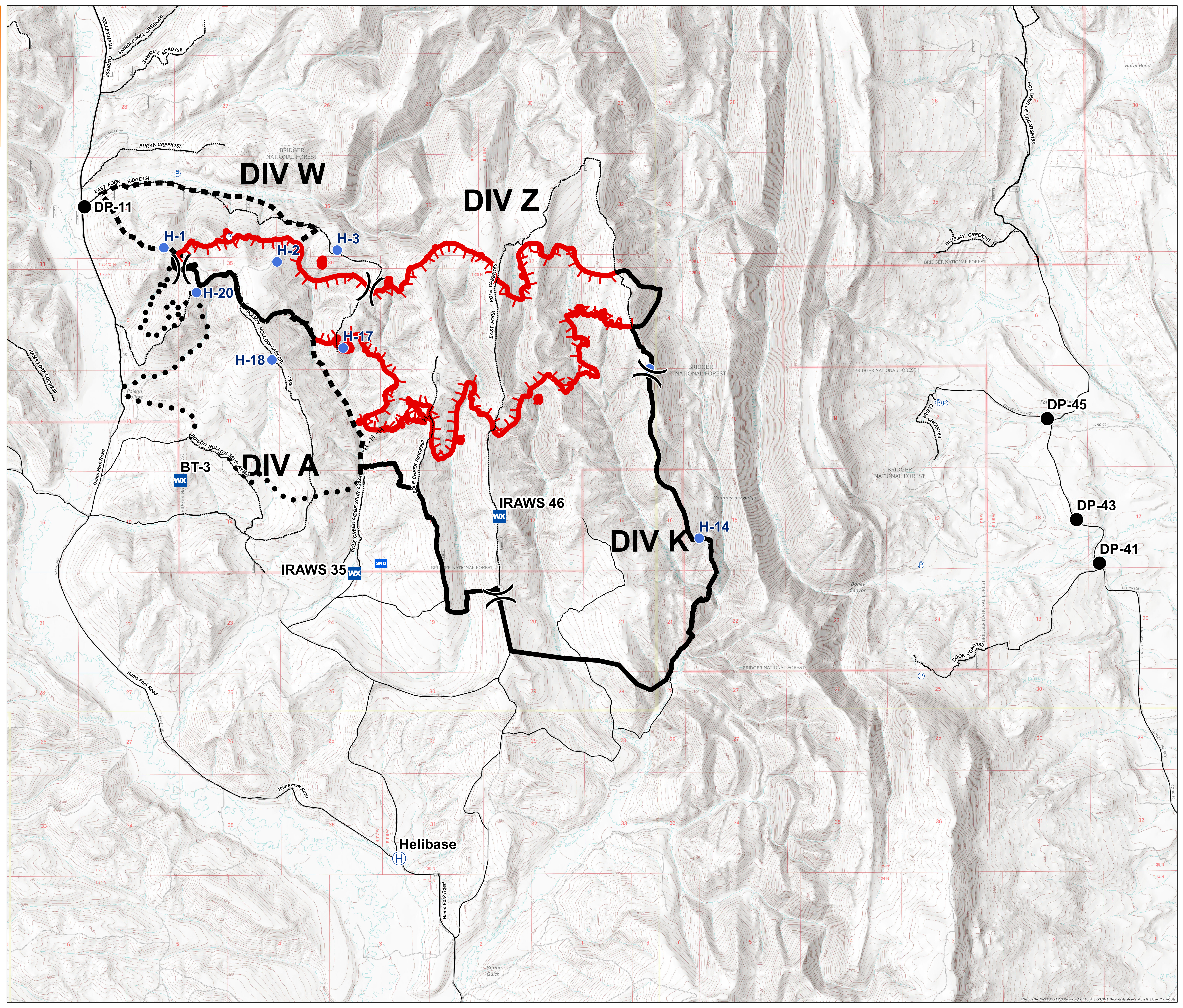


Planning
Pole Creek
 WY-BTF_001706
 8/18/2017
 2,738 acres
 as of 08/16/2017 at 2230 HRS



- Drop Point
- ⊕ Helibase
- Helispot
- WX Mobile Weather Unit
- Ⓟ Pump
-) Division Break
- SNO Snotel Site
- High Clearance Road
- All-Vehicle Road
- ▬ Uncontrolled Fire Edge
- Completed Line
- H - H - Completed Hand Line
- ▬ Planned Fire Line
- ● ● Planned Secondary Line



0 0.5 1 Miles

UTM 11N, NAD83
 8172017_2146.mxd

USGS, NGA, NIMA, CGIAR, NCEAS, NLS, DNR, NMA, GeobaseSystem and the GIS User Community