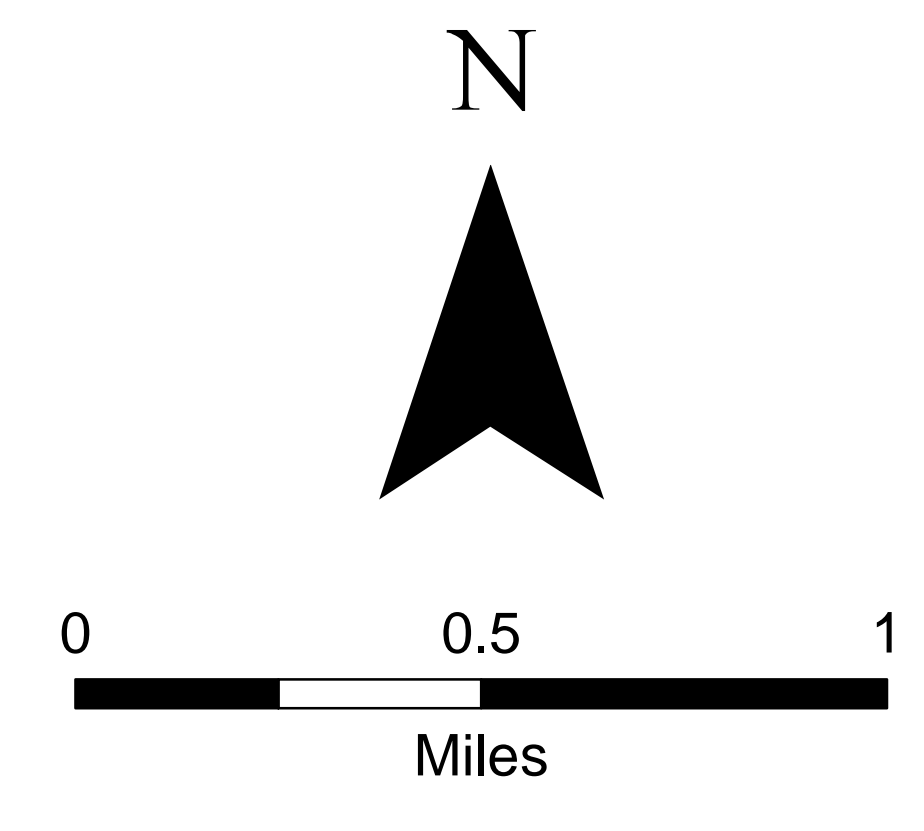
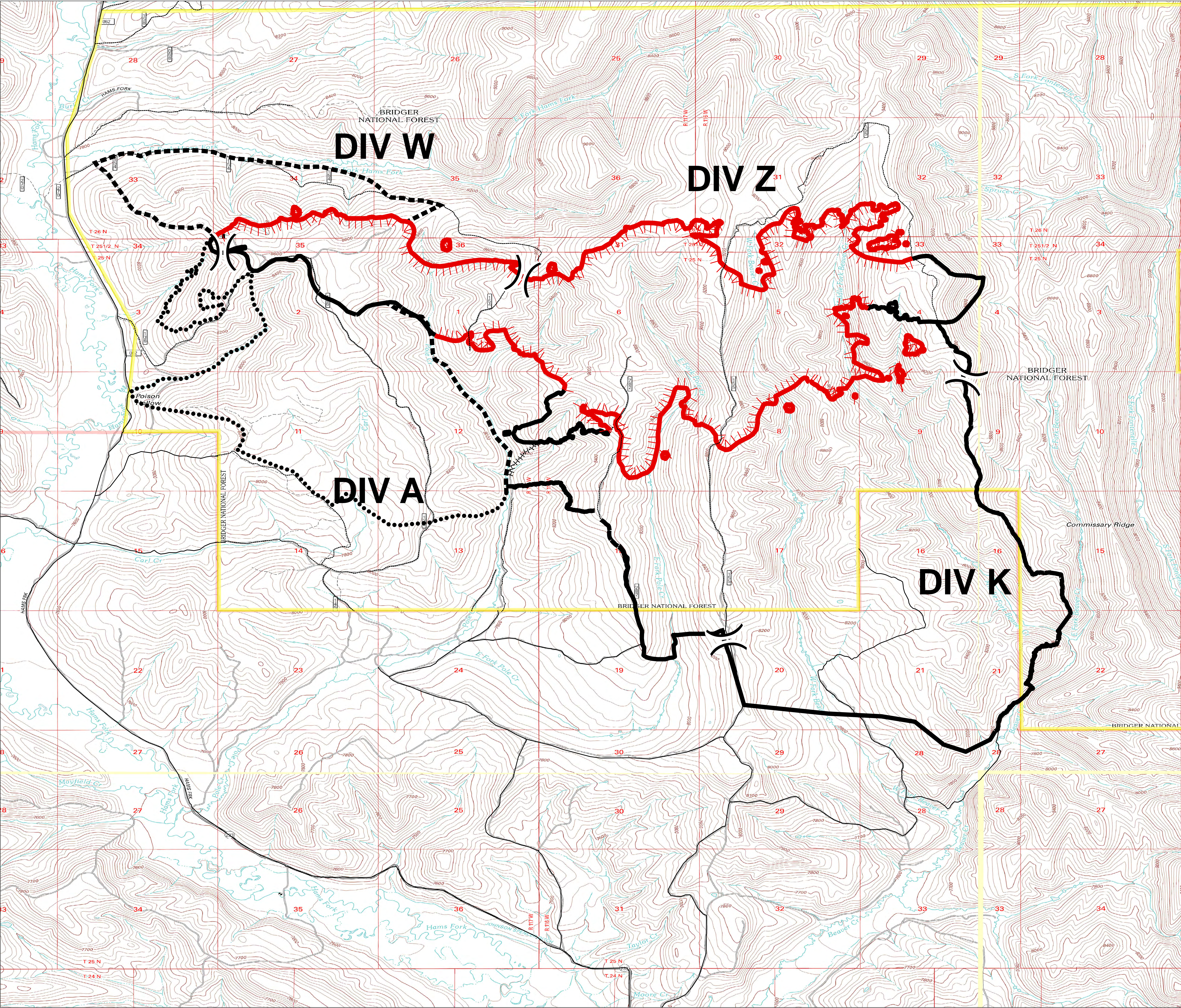


Public Information
Pole Creek
WY-BTF-001706
8/21/2017

2,812 acres
as of 08/19/2017 at 2300 Hrs



- Legend**
- Division Break
 - All-Vehicle Road
 - High Clearance Road
 - Uncontrolled Fire Edge
 - Completed Line
 - Completed Hand Line
 - Planned Fire Line
 - Planned Secondary Line
 - PoleCreekClosureArea



UTM 11N, NAD83
8/20/2017 1:15 PM
File: Note_Inv_2017_Pole_Creek_WYBTF001706