

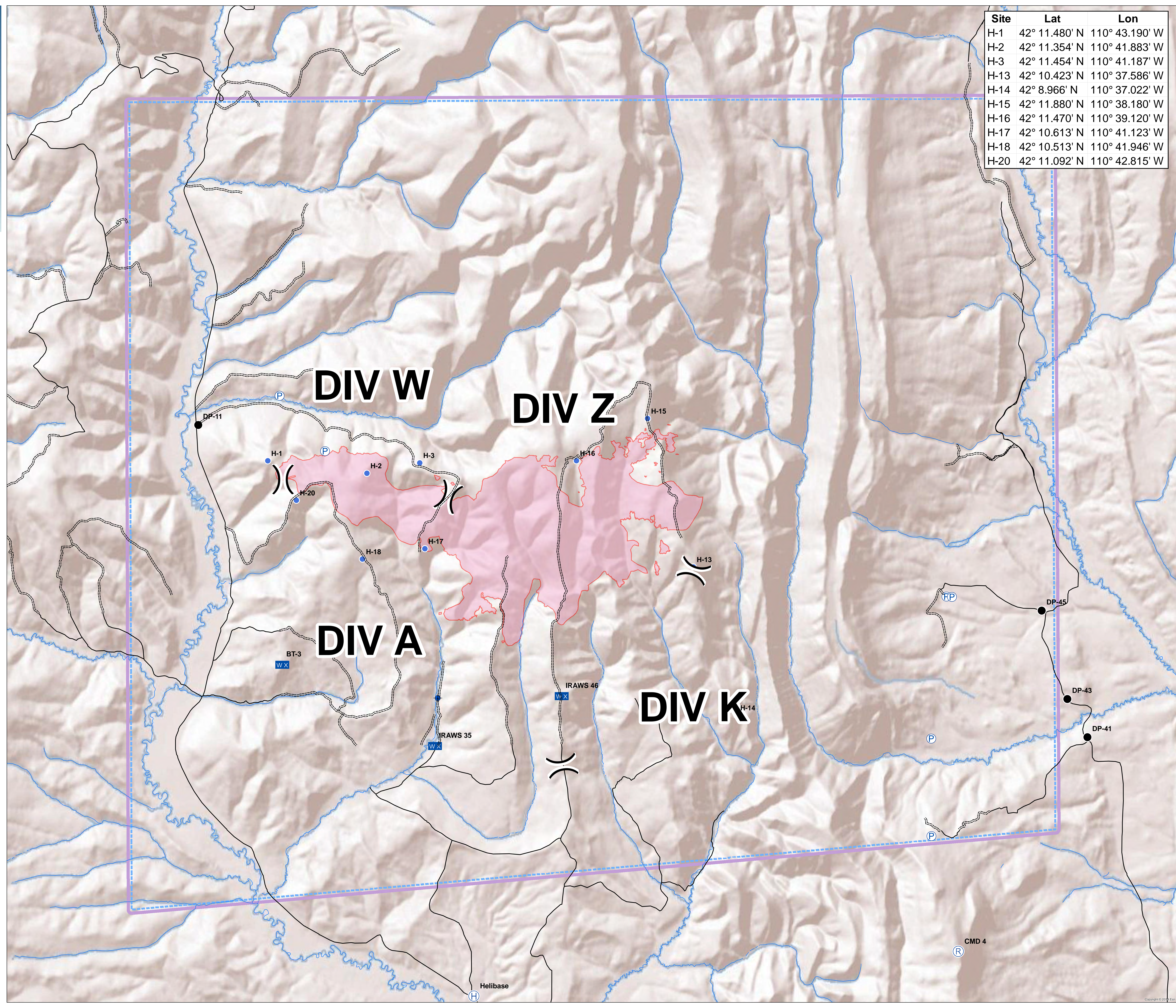
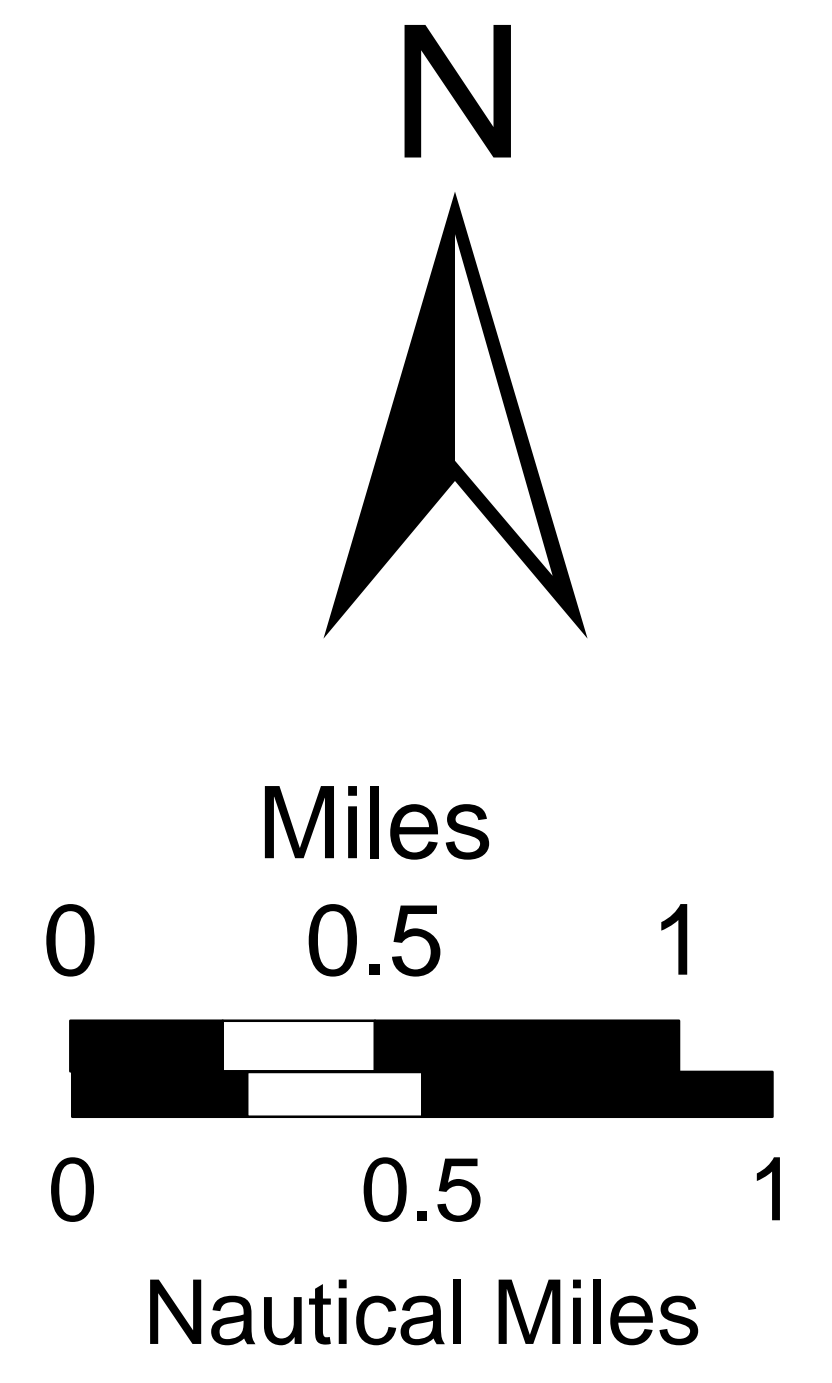
Air Operations

Pole Creek
 WY-BTF-001706
 23 August 2017
 2,901 acres
 as of 08/22/17, 0900 Hrs



Site	Lat	Lon
H-1	42° 11.480' N	110° 43.190' W
H-2	42° 11.354' N	110° 41.883' W
H-3	42° 11.454' N	110° 41.187' W
H-13	42° 10.423' N	110° 37.586' W
H-14	42° 8.966' N	110° 37.022' W
H-15	42° 11.880' N	110° 38.180' W
H-16	42° 11.470' N	110° 39.120' W
H-17	42° 10.613' N	110° 41.123' W
H-18	42° 10.513' N	110° 41.946' W
H-20	42° 11.092' N	110° 42.815' W

- Dip Site
- Drop Point
- Helibase
- Helispot
- Mobile Weather Unit
- Pump
- Repeater
- Division Break
- Fire Area
- All Vehicle Road
- High Clearance Vehicles
- Stream
- TFR_7_5510



UTM 12N, NAD83
 8022017, 2017 1m
 Copyright © 2016, Esri