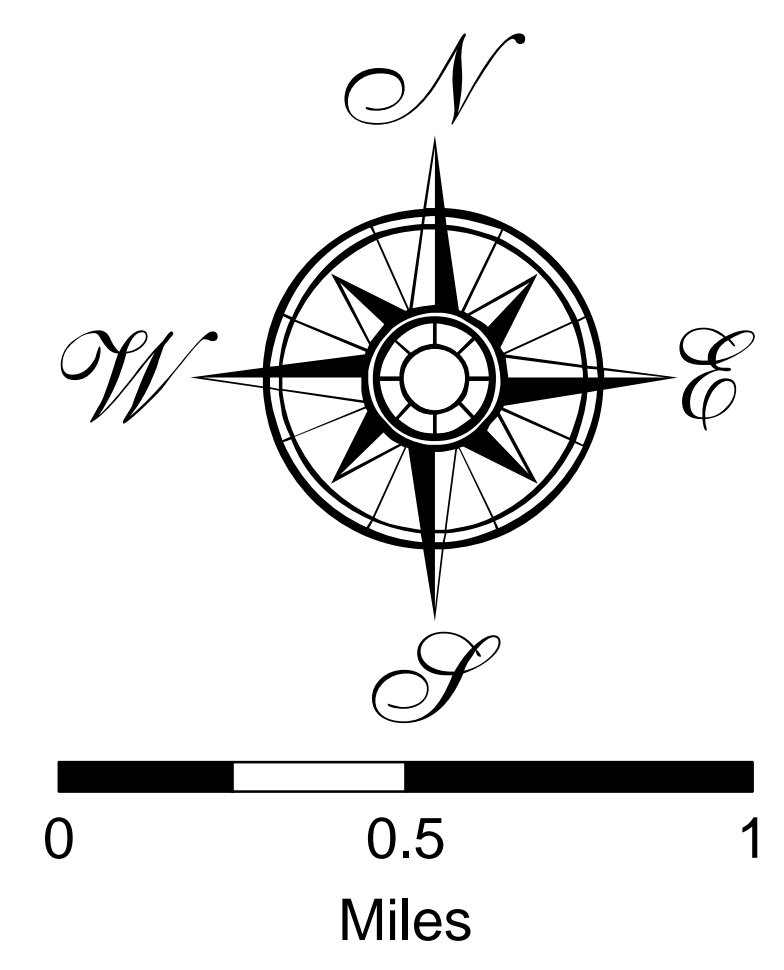
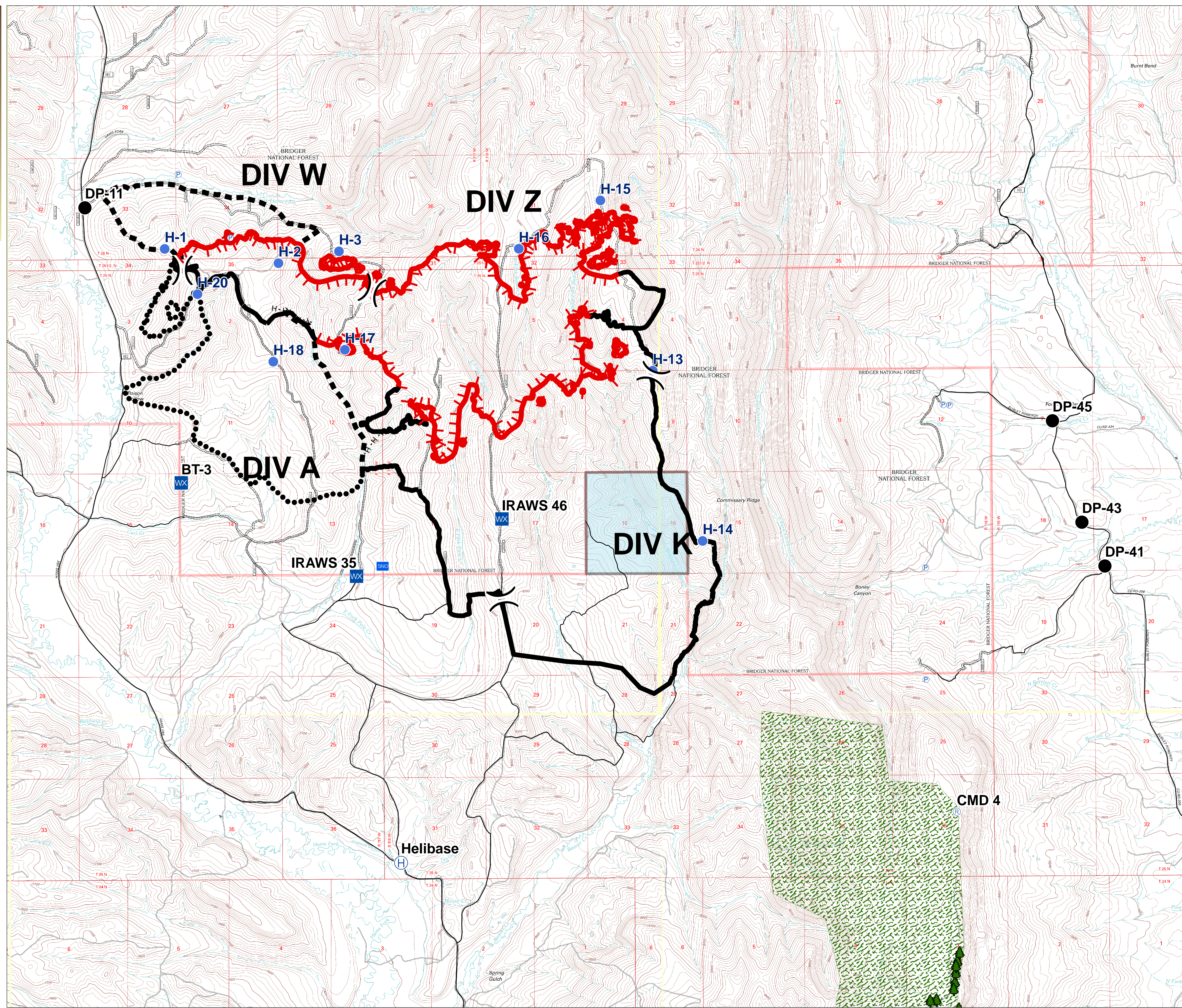


**Briefing**  
 Pole Creek  
 WY-BTF-001706  
 8/23/2017  
 2,901 acres  
 as of 08/22/2017 at 0900 Hrs



- Drop Point
- Ⓜ Helibase
- Helispot
- WX Mobile Weather Unit
- Ⓟ Pump
- Ⓡ Repeater
- ) ( Division Break
- ▬ Uncontrolled Fire Edge
- ▬ Completed Line
- H-H-H Completed Hand Line
- ▬ Planned Fire Line
- Planned Secondary Line
- SNO Snotel Site
- 🌲 Whitebark Pine Stands
- All-Vehicle Road
- ⋯ High Clearance Road
- 🌲 Whitebark Pine Area
- ▭ State Trust Land



UTM 11N, NAD83  
 822017, 1952 hrs  
 BMAP\_A00E\_WY2017\_P001\_0000\_0010010106