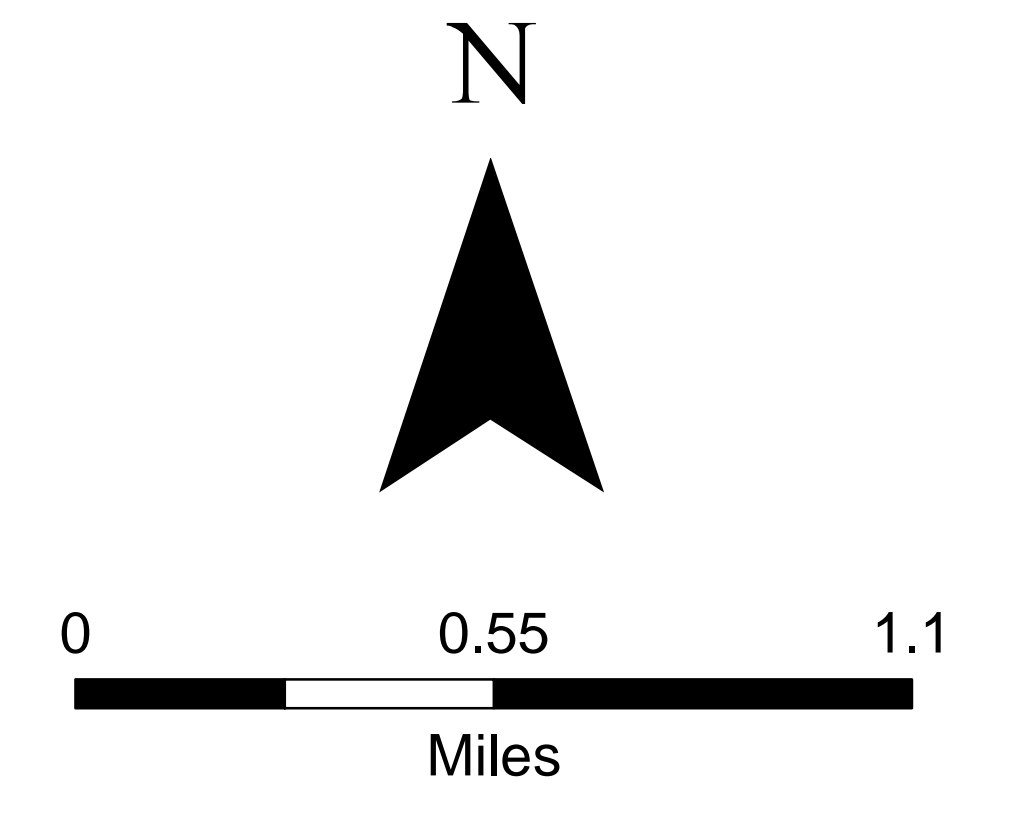
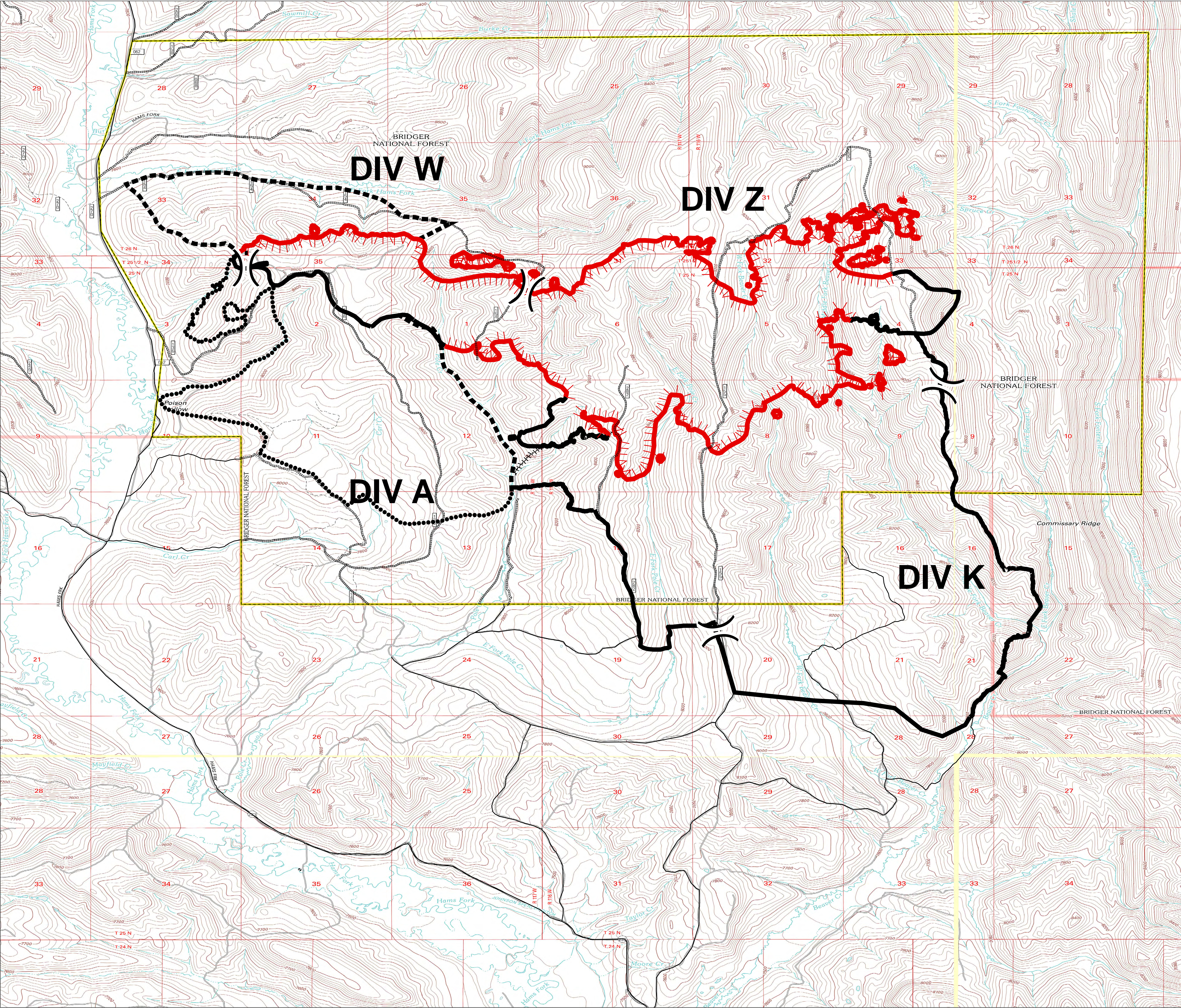


Public Information
Pole Creek
WY-BTF-001706
8/23/2017

2,901 acres
as of 08/22/2017 at 0900 Hrs



- Division Break
- All-Vehicle Road
- High Clearance Road
- Uncontrolled Fire Edge
- Completed Line
- Completed Hand Line
- Planned Fire Line
- Planned Secondary Line
- Pole Creek Closure Area



UTM 11N, NAD83
8/23/2017, 2:52 PM
Pole_Creek_2017_Pole_Creek_WY-BTF001706