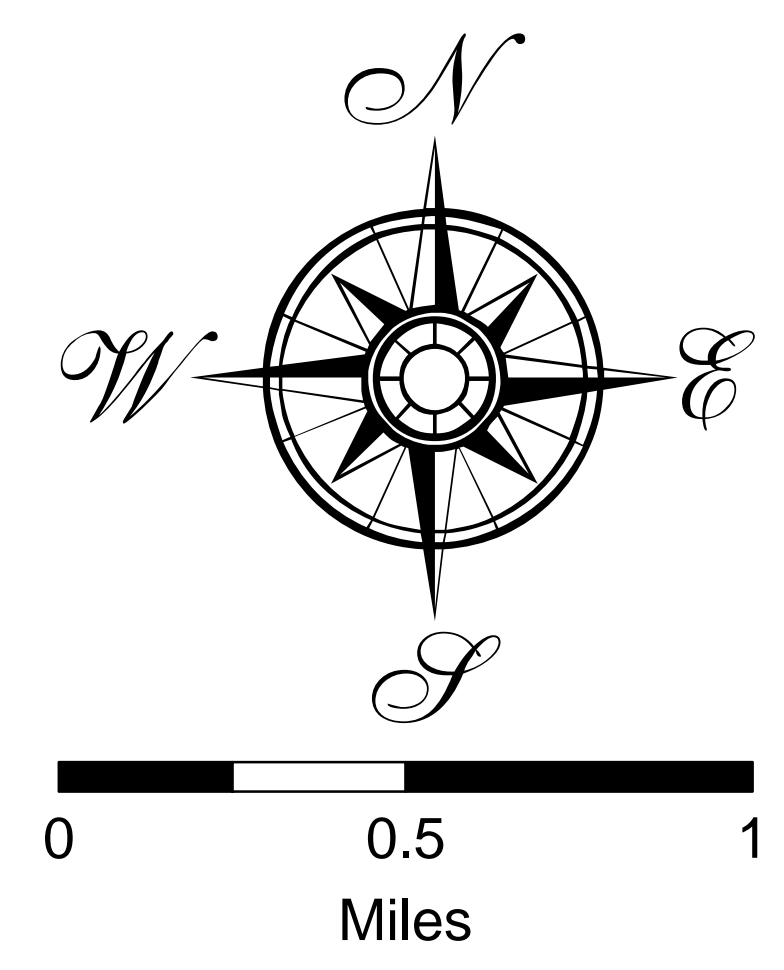
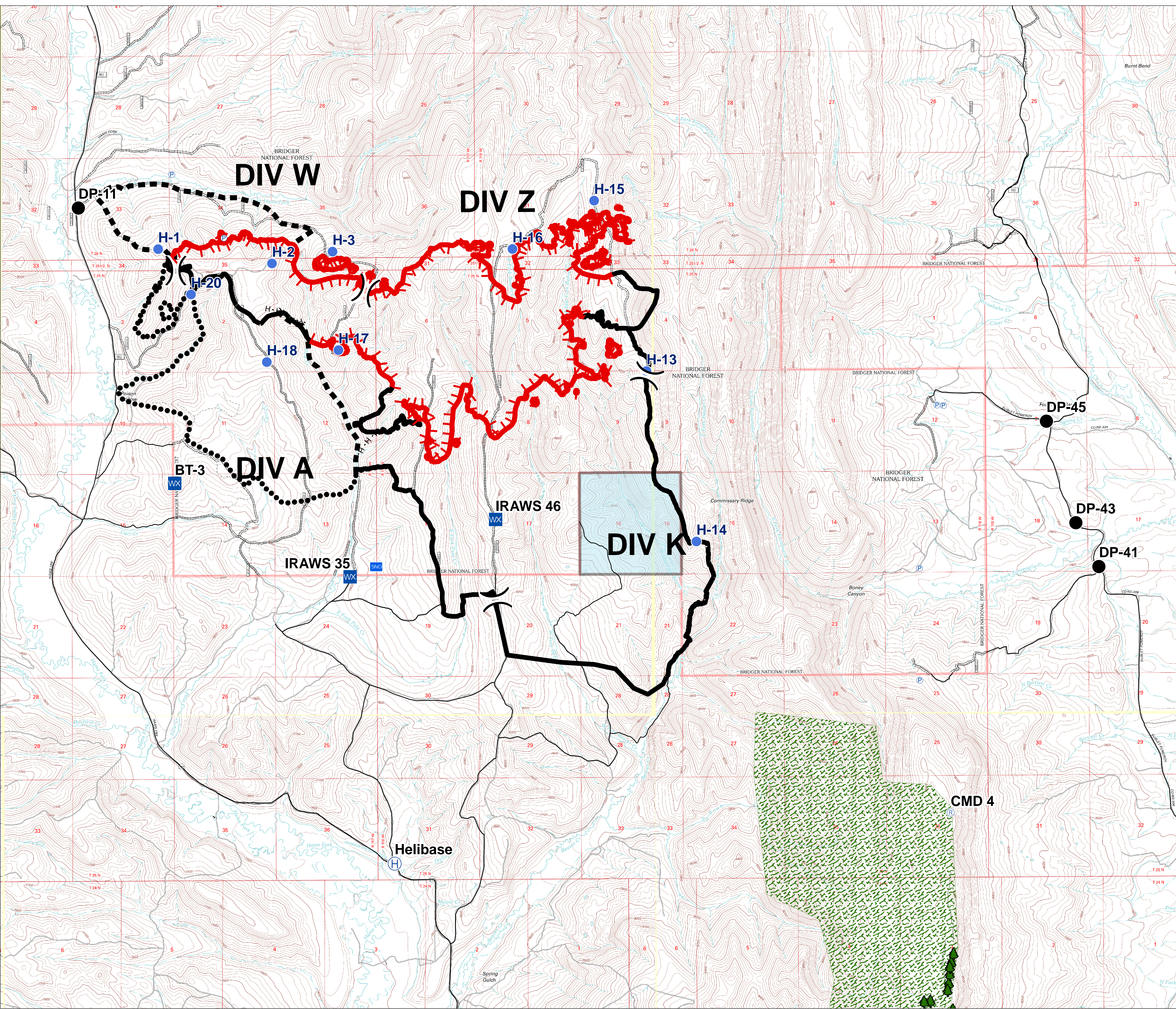


Briefing
 Pole Creek
 WY-BTF001706
 8/24/2017
 2,940 acres
 as of 08/23/2017 at 0115 Hrs



- Drop Point
- ⊕ Helibase
- Helispot
- WX Mobile Weather Unit
- Ⓟ Pump
- Ⓡ Repeater
-) (Division Break
- 🔴 Uncontrolled Fire Edge
- Completed Line
- H - H - H Completed Hand Line
- - - Planned Fire Line
- ⋯ Planned Secondary Line
- SN Snotel Site
- 🌲 Whitebark Pine Stands
- All-Vehicle Road
- ⋯ High Clearance Road
- 🌲 Whitebark Pine Area
- ▭ State Trust Land



UTM 11N, NAD83
 823097, 1312 hrs
 BMAP_A08E_WY2017_P01A_C000_010701706