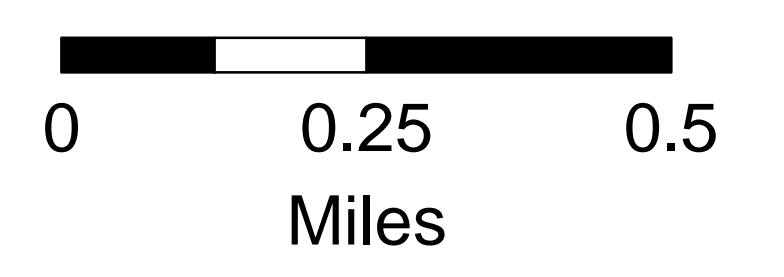
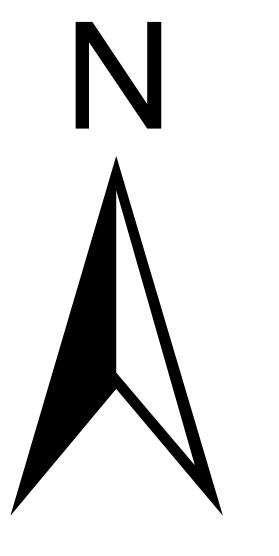
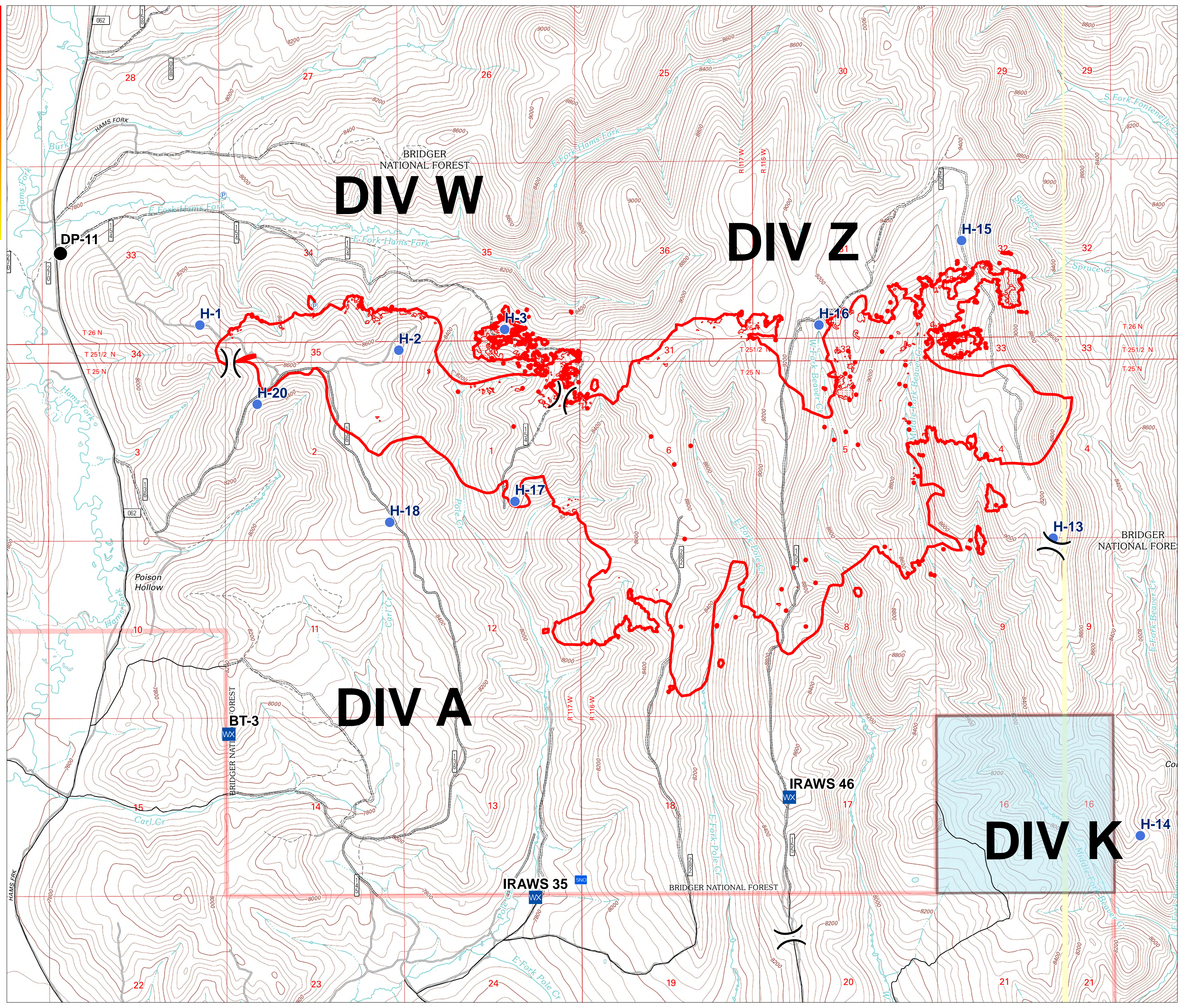


**IR**  
**Pole Creek**  
**WY-BTF-001706**  
**8/24/2017**  
 2,940 acres  
 as of 08/23/2117 at 0150 Hrs



- Drop Point
- Helispot
- Mobile Weather Unit
- Pump
- Division Break
- Heat Perimeter
- Intense Heat
- Scattered Heat
- Isolated Heat Source
- Snotel Site
- All-Vehicle Road
- High Clearance Road
- State Trust Land



UTM 12N, NAD83  
 8220975, 1832 Hrs  
 IR\_0824\_2017\_Pole\_Creek\_WY-BTF001706