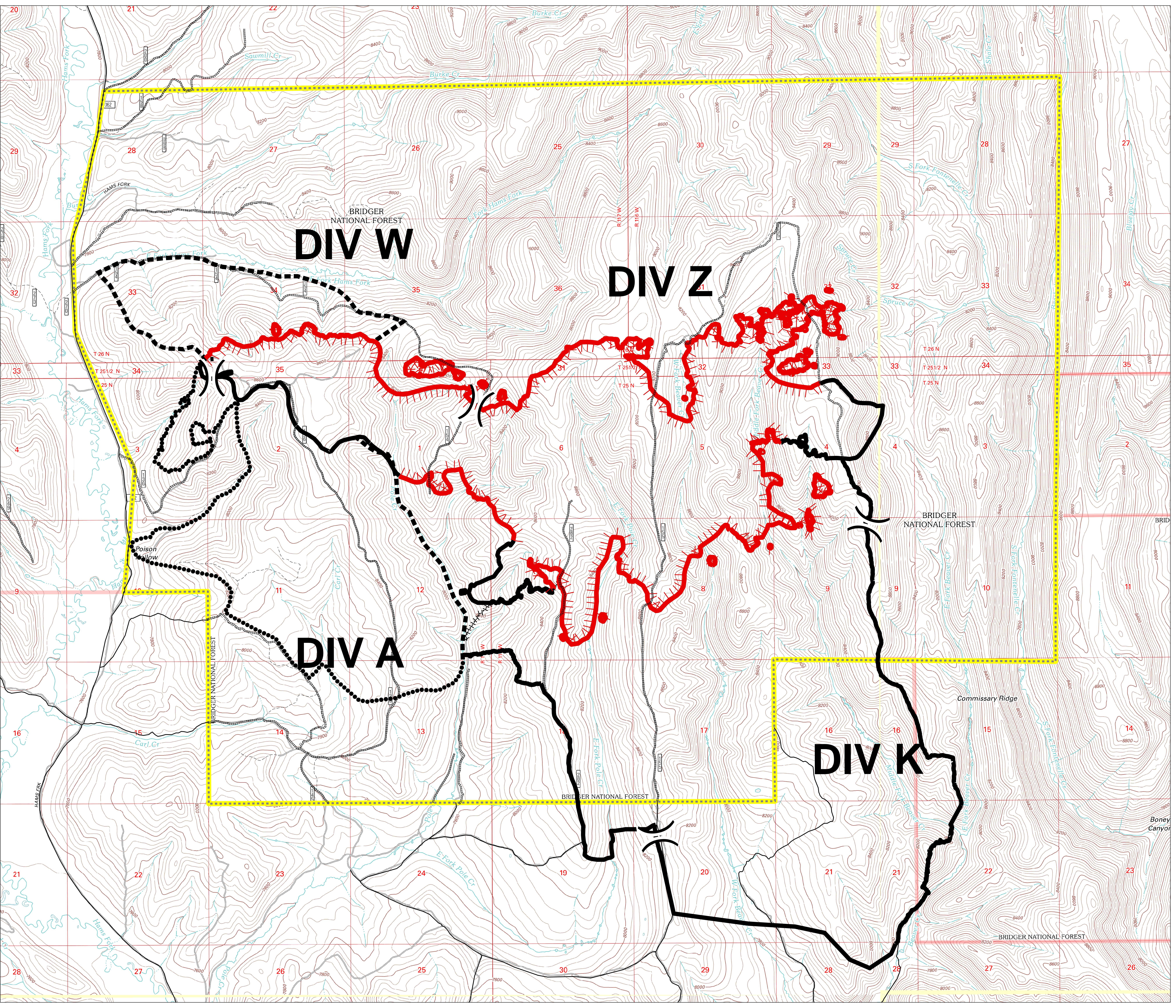


**Public Information**  
**Pole Creek**  
**WY-BTF-001706**  
**8/24/2017**

2,940 acres  
as of 08/23/2017 at 0115 Hrs



- Division Break
- All-Vehicle Road
- High Clearance Road
- Uncontrolled Fire Edge
- Completed Line
- Completed Hand Line
- Planned Fire Line
- Planned Secondary Line
- Pole Creek Closure Area



N

