








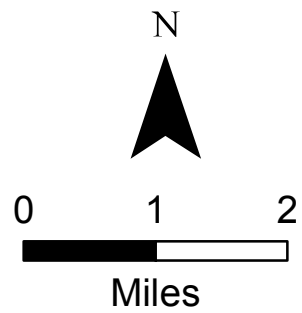


IAP
 Pole Creek
 WY-BTF001706
 08/27/2017
 2,975 acres
 as of 08/25/17 at 22:45 Hrs

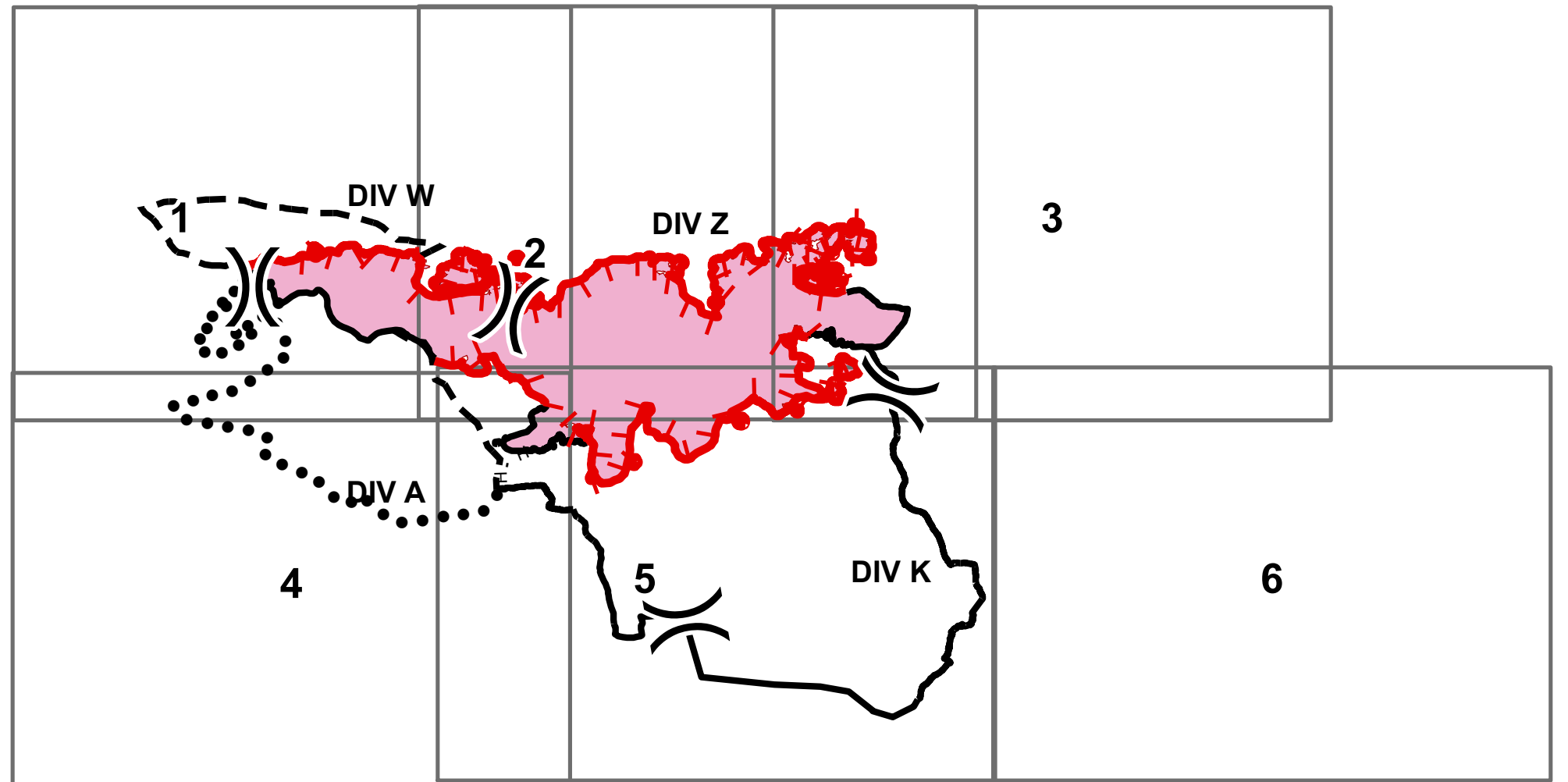


-  Repeater
-  Division Break
-  Uncontrolled Fire Edge
-  Completed Line
-  Completed Hand Line
-  Planned Fire Line
-  Planned Secondary Line
-  Fire Area
-  IAP Index



UTM 12N, NAD83
 akeske
 8/25/2017, 2055 hrs
 iap_11X17_land_MPindex_2017_Pole_Creek_WY-BTF001706

 **CMD 1**



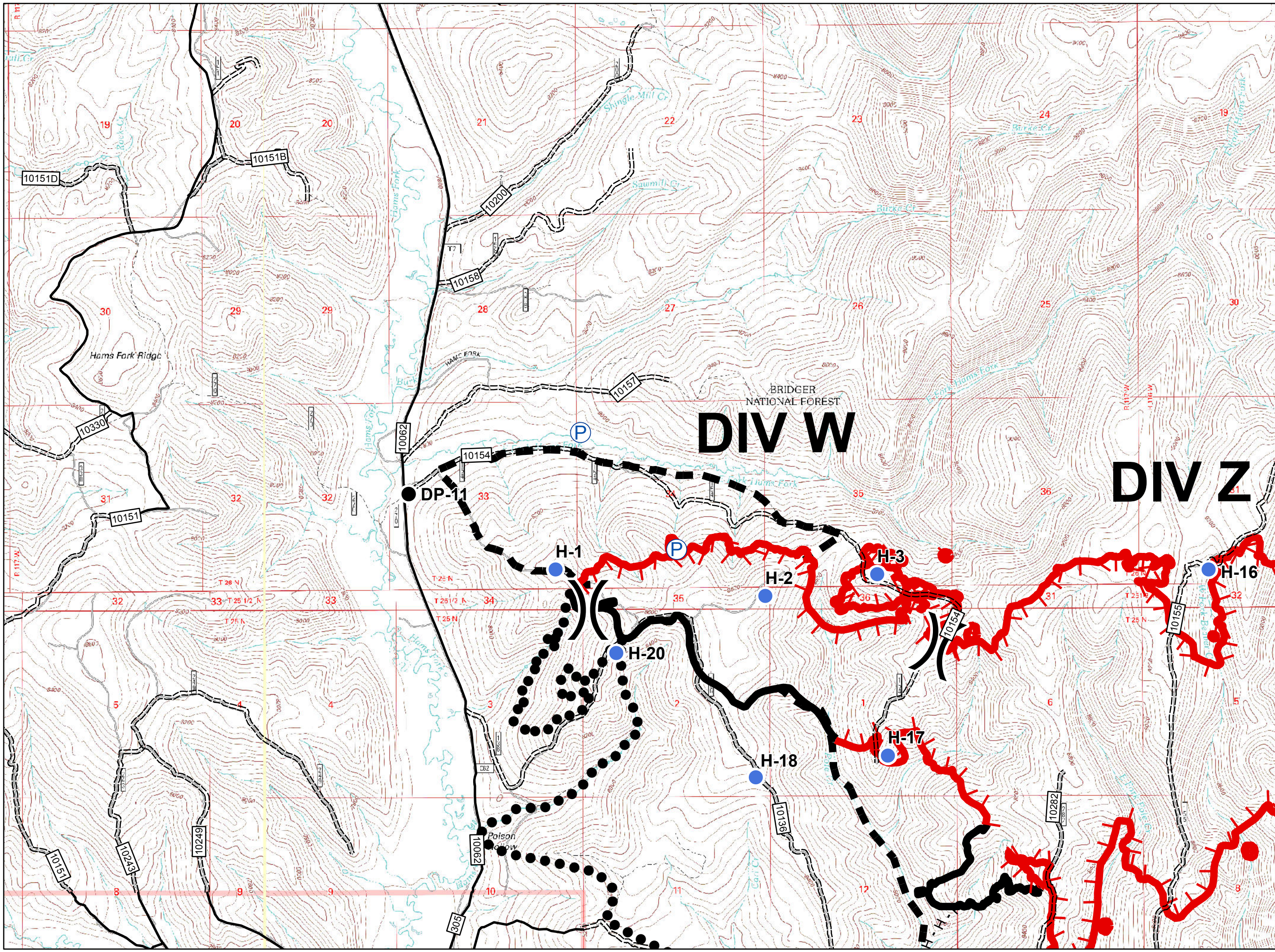
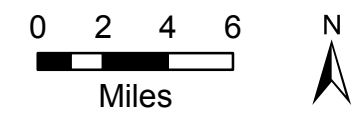
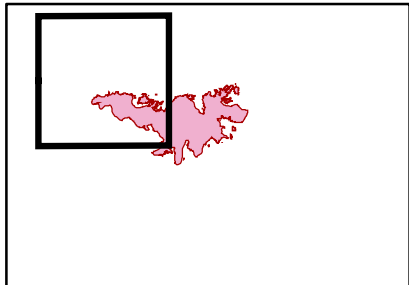
 **CMD 2**

CMD 4




- Drop Point
- Helispot
- P Pump
- ⌋ Division Break

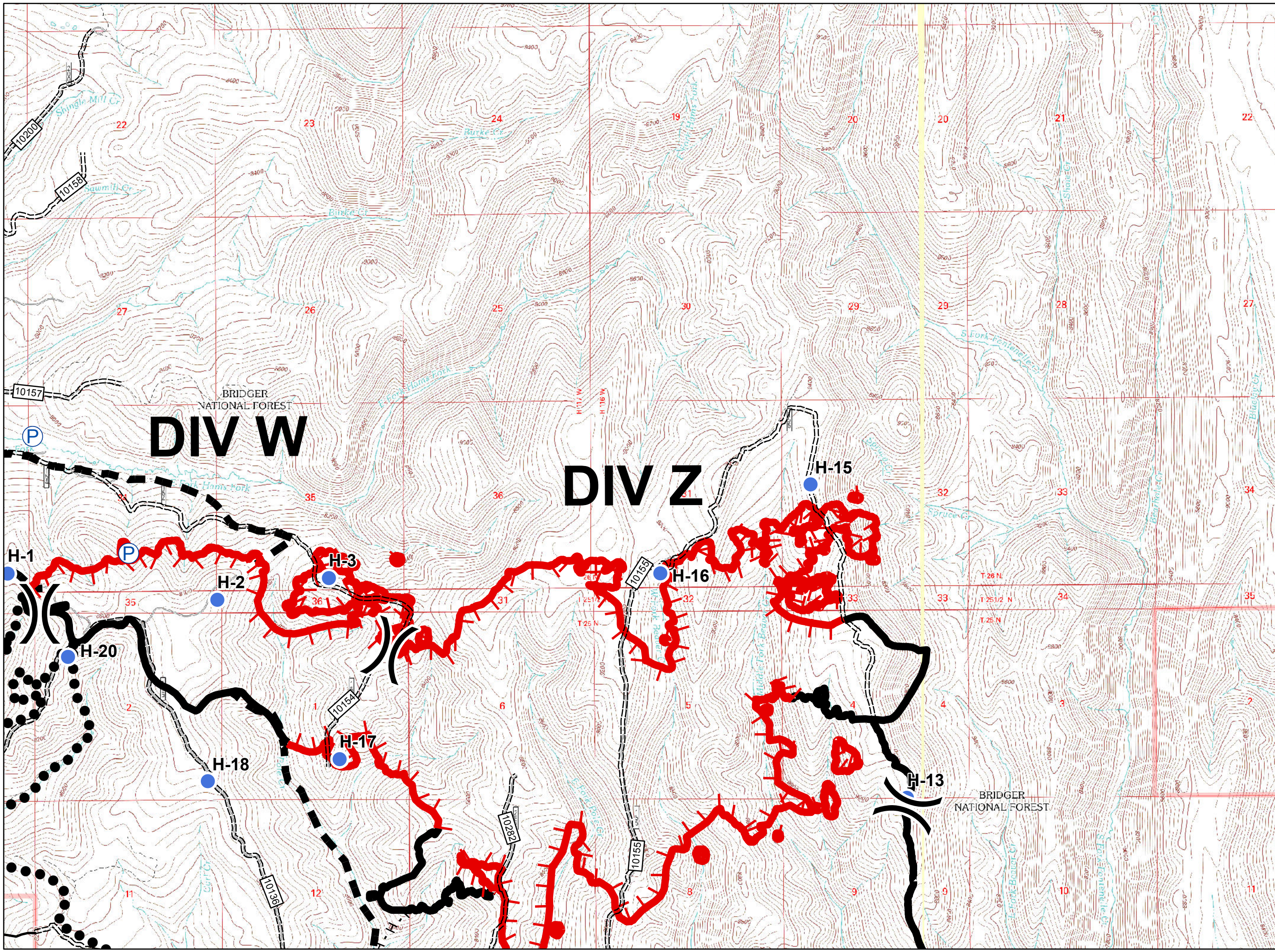
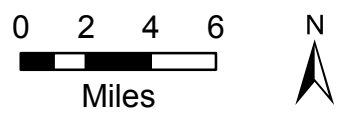
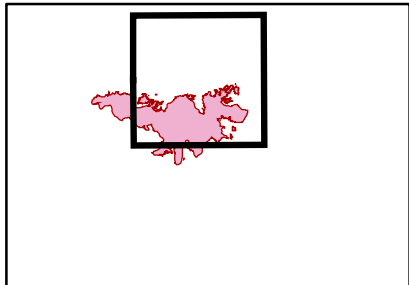
- Uncontrolled Fire Edge
- Completed Line
- H - H - Completed Hand Line
- Planned Fire Line
- Planned Secondary Line
- ALL VEHICLE ROAD
- HIGH CLEARANCE ROAD





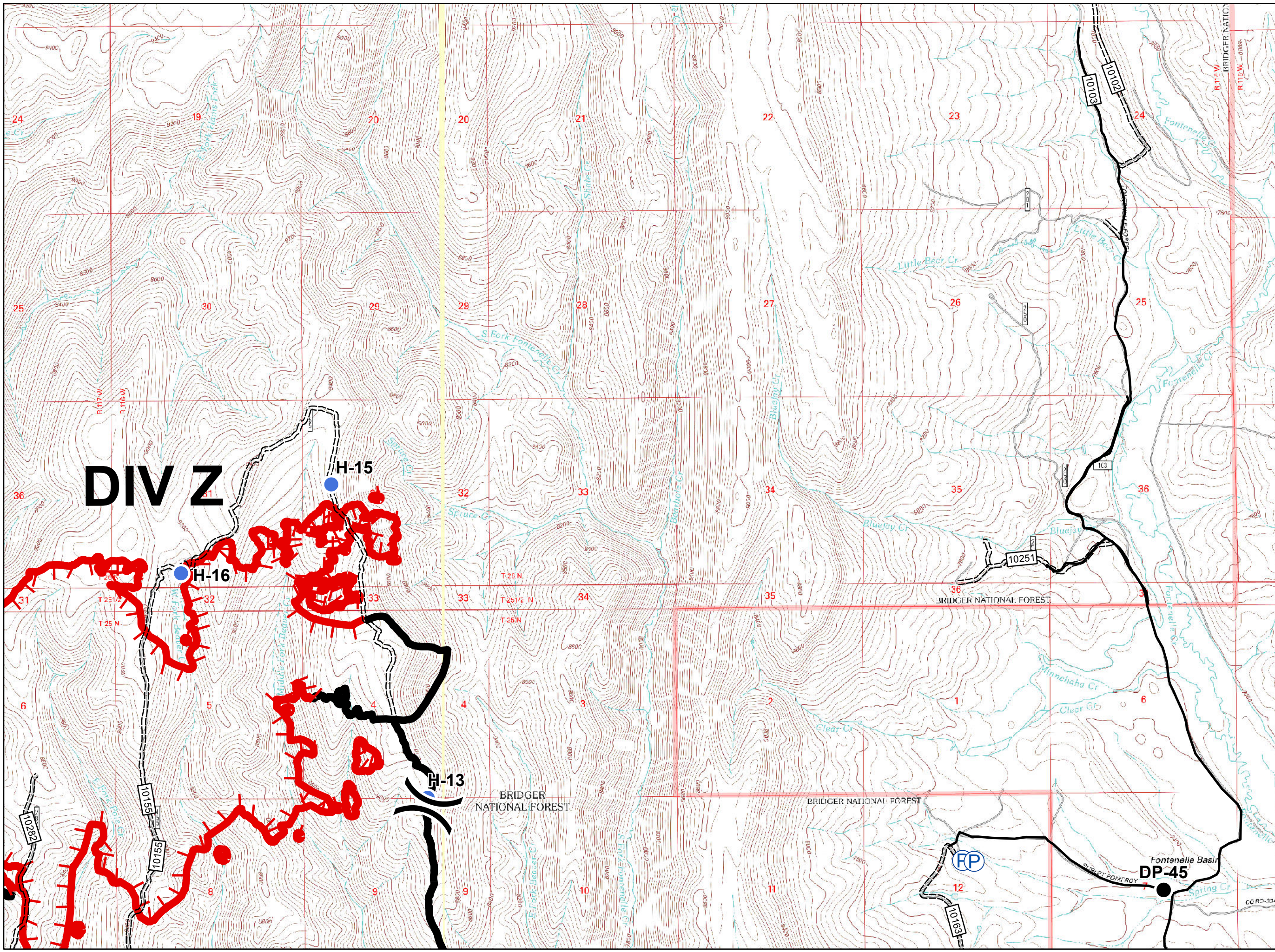
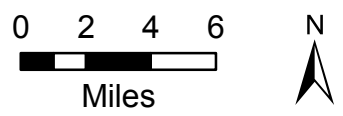
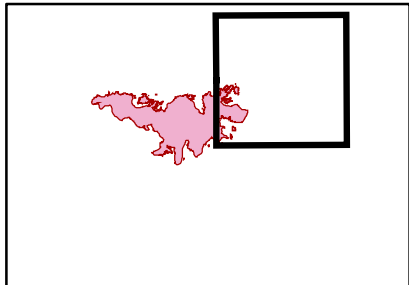
- Helispot
- P Pump
-) Division Break

- ┌ Uncontrolled Fire Edge
- Completed Line
- H - H - Completed Hand Line
- Planned Fire Line
- Planned Secondary Line
- HIGH CLEARANCE ROAD





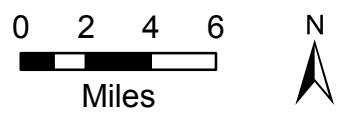
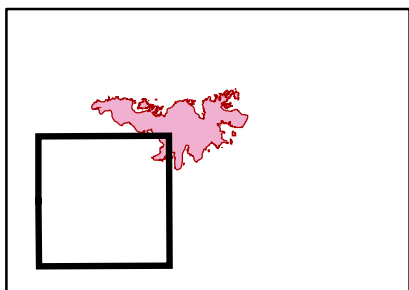
- Drop Point
- Helispot
- Pump
- Division Break
- Uncontrolled Fire Edge
- Completed Line
- Completed Hand Line
- ALL VEHICLE ROAD
- HIGH CLEARANCE ROAD



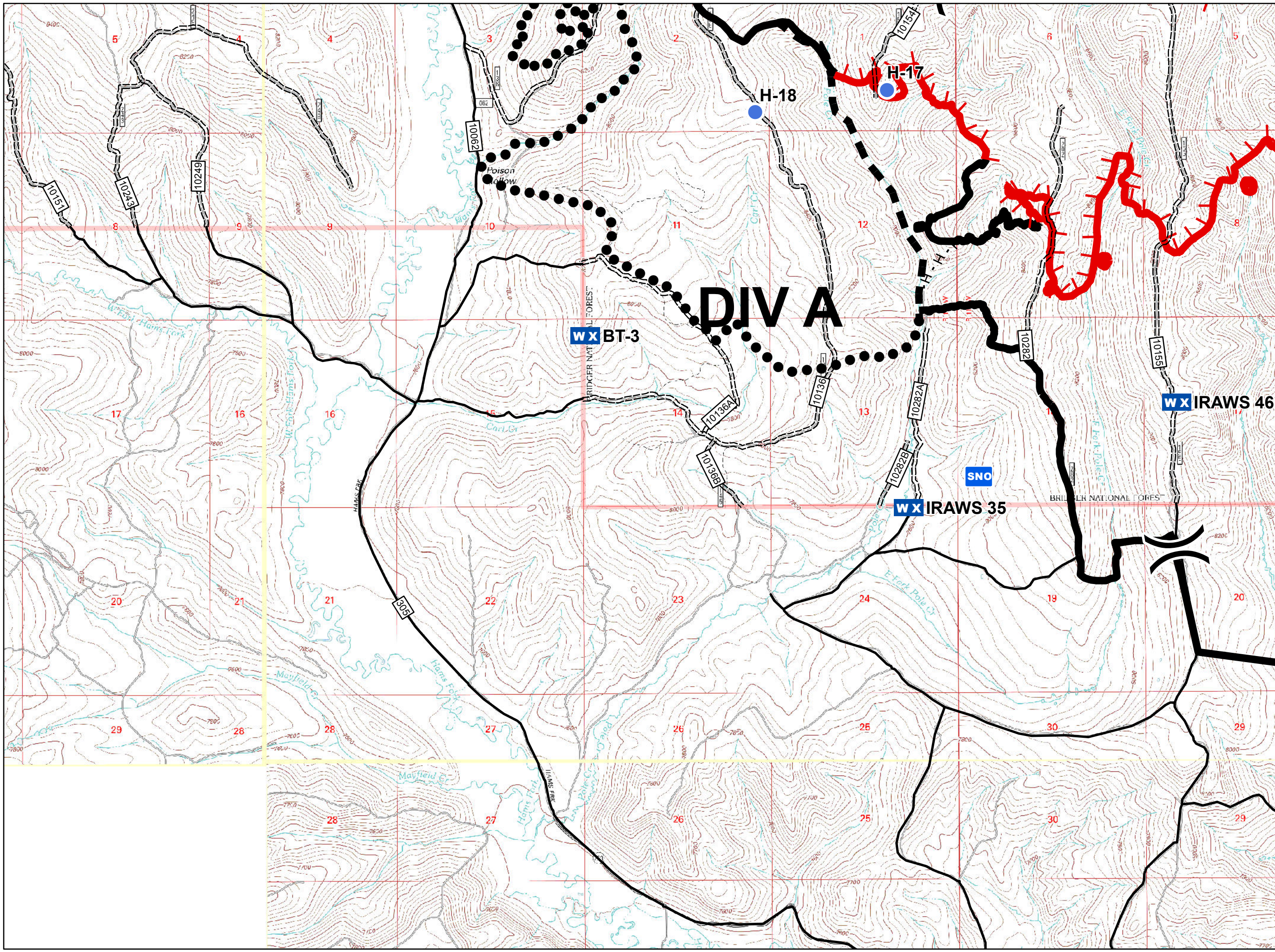
IAP
 Pole Creek
 WY-BTF001706
 08/27/2017
 2,975 acres
 as of 08/25/17, 22:45 Hrs
 Page 4



- Helispot
- WX Mobile Weather Unit
- Division Break
- Uncontrolled Fire Edge
- Completed Line
- Completed Hand Line
- Planned Fire Line
- Planned Secondary Line
- ALL VEHICLE ROAD
- HIGH CLEARANCE ROAD
- SNO Snotel Station

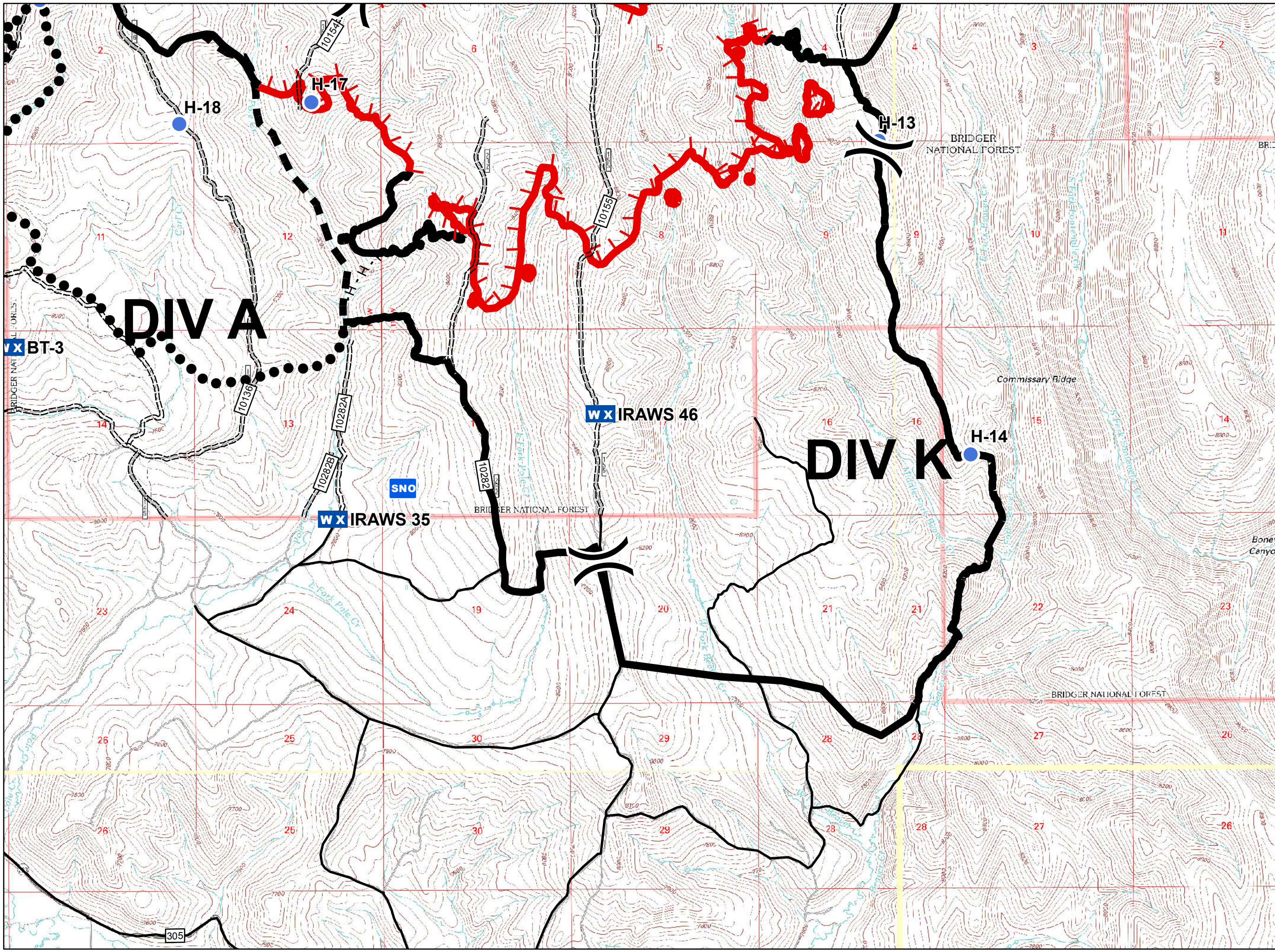
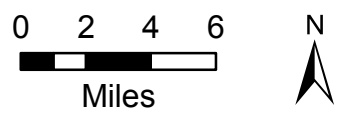
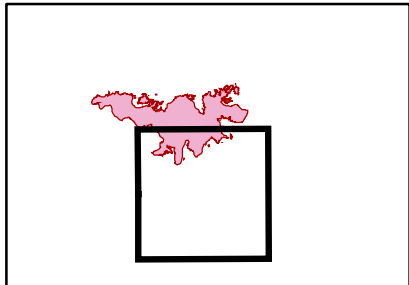


UTM 12N, NAD83
 akeske
 8/25/2017, 21:02 hrs
 lap_11X17_land_MPal_2017_Pole_Creek_WY-BTF001706





- Helispot
- WX Mobile Weather Unit
- Division Break
- Uncontrolled Fire Edge
- Completed Line
- H - H -** Completed Hand Line
- Planned Fire Line
- Planned Secondary Line
- HIGH CLEARANCE ROAD
- SNO Snotel Station





- Drop Point
- Helispot
- P Pump
- R Repeater
- Division Break
- Uncontrolled Fire Edge
- Completed Line
- HIGH CLEARANCE ROAD

