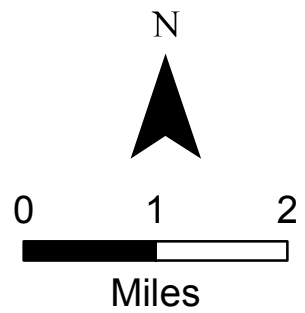


IAP
 Pole Creek
 WY-BTF001706
 08/28/2017
 3,036 acres
 as of 08/26/17 at 22:45 Hrs

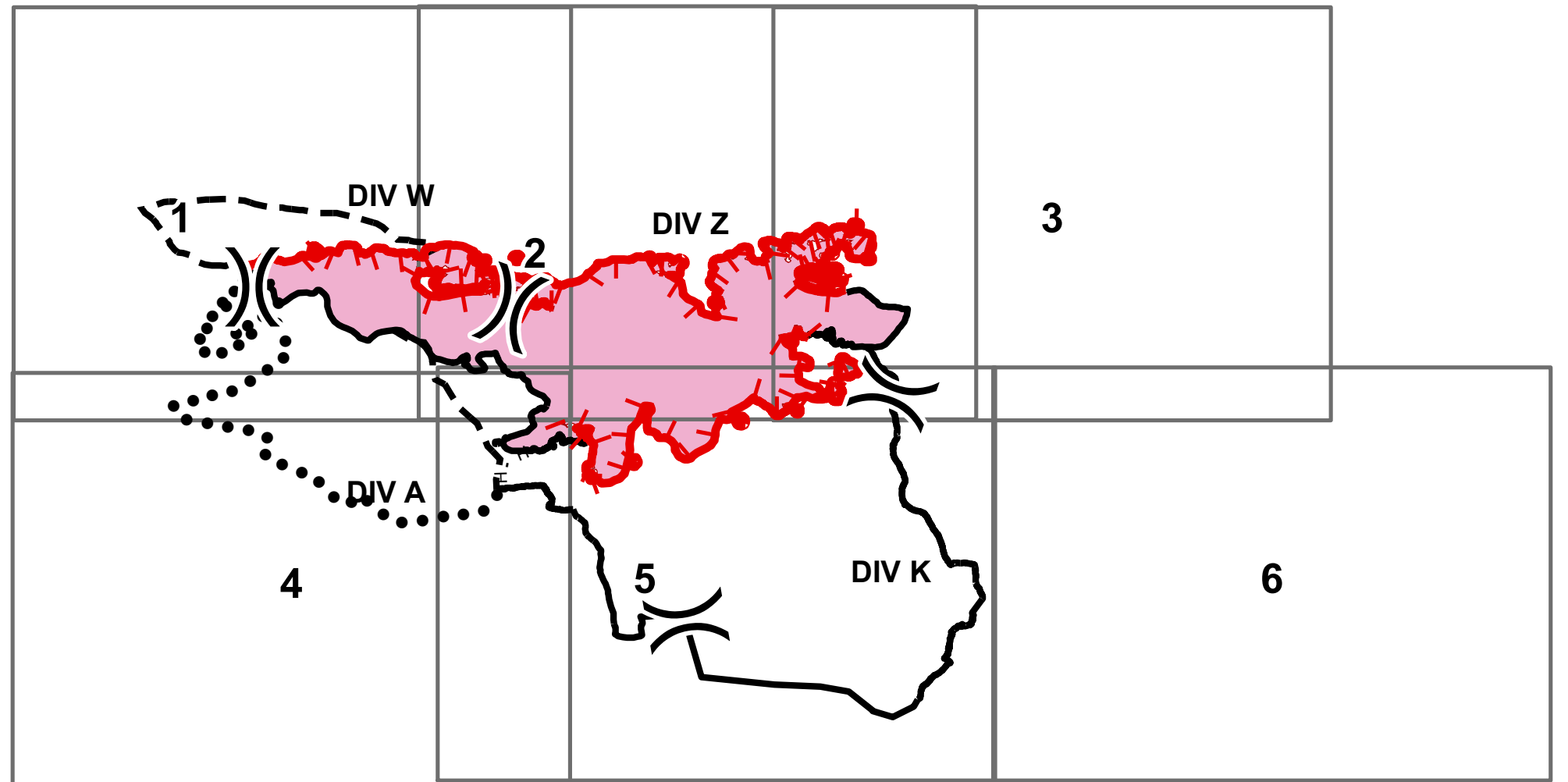


- Repeater
- Division Break
- Uncontrolled Fire Edge
- Completed Line
- Completed Hand Line
- Planned Fire Line
- Planned Secondary Line
- Fire Area
- IAP Index



UTM 12N, NAD83
 akeske
 8/26/2017, 2012 hrs
 iap_11X17_land_MPindex_2017_Pole_Creek_WY-BTF001706

CMD 1



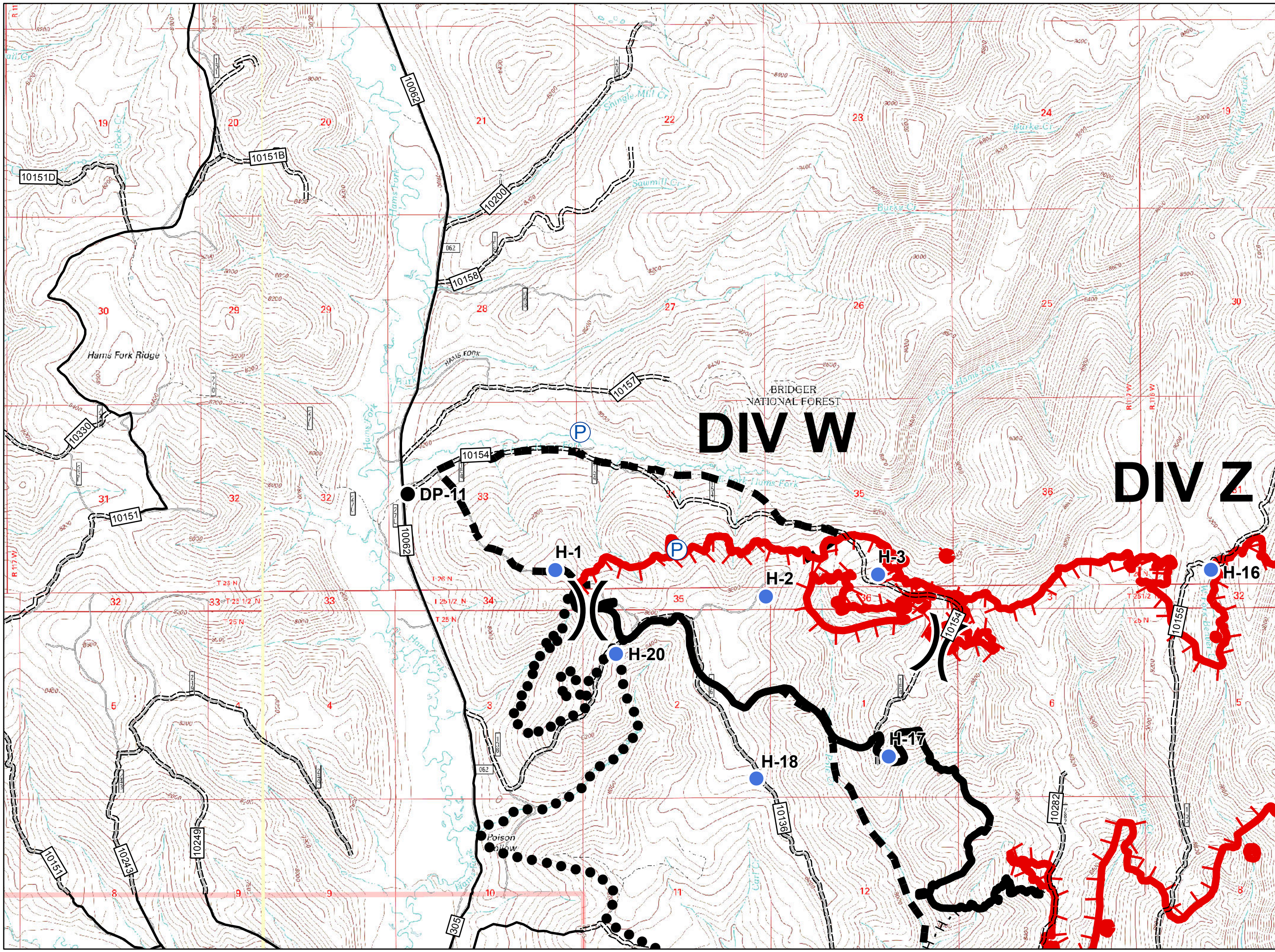
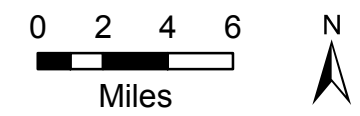
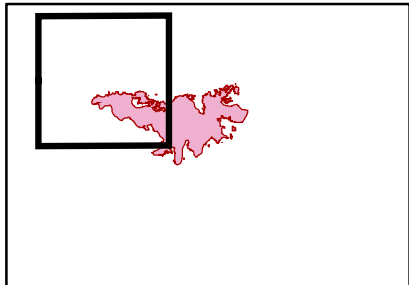
CMD 2

CMD 4



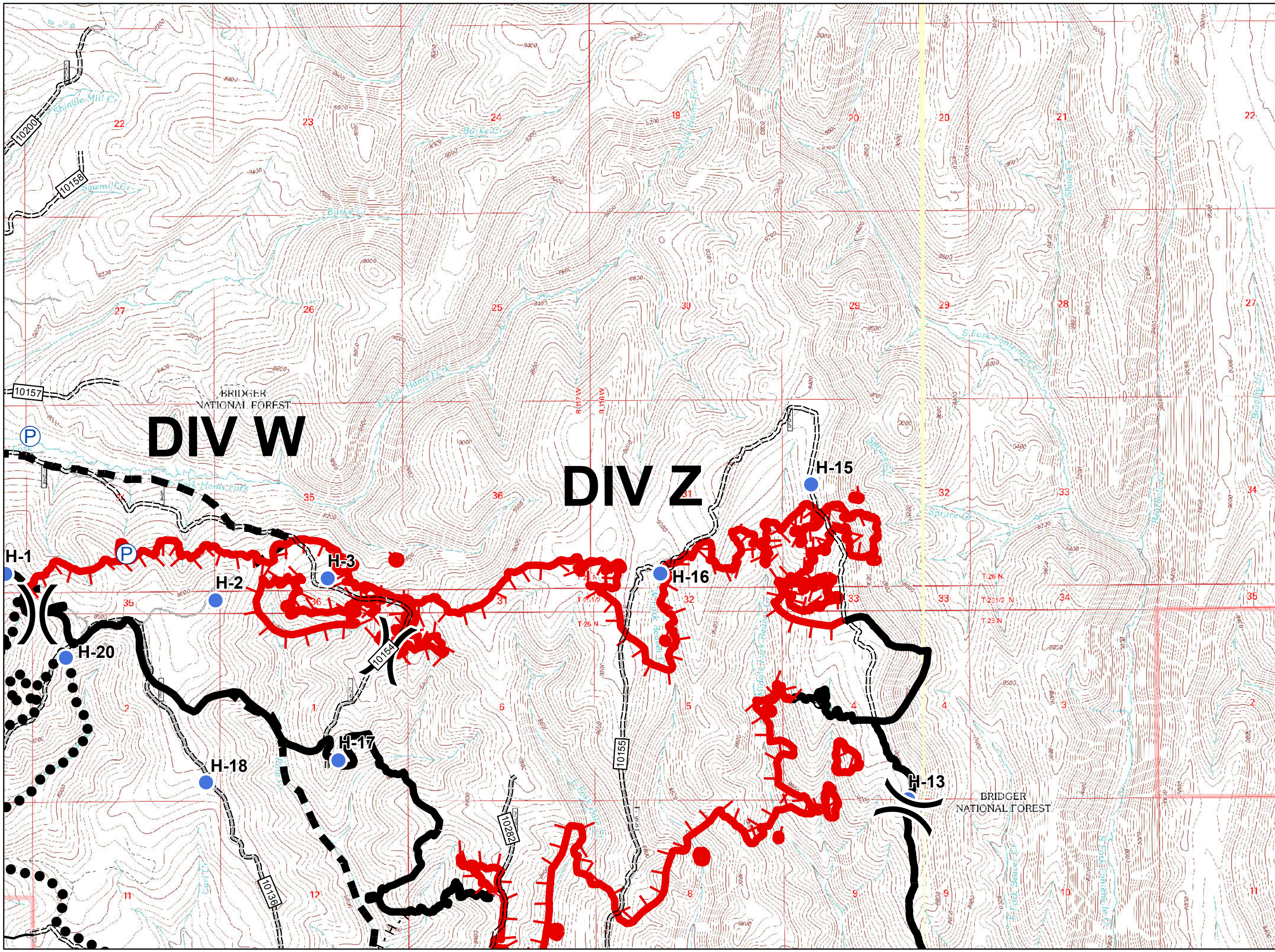
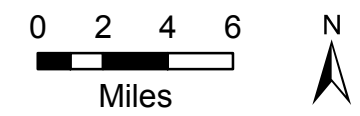
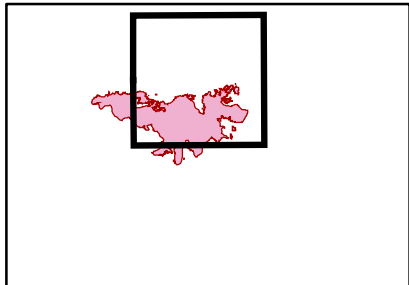
- Drop Point
- Helispot
- (P) Pump
- () Division Break

- ┌ Uncontrolled Fire Edge
- ▬ Completed Line
- H - H - Completed Hand Line
- ▬ Planned Fire Line
- Planned Secondary Line
- ALL VEHICLE ROAD
- HIGH CLEARANCE ROAD





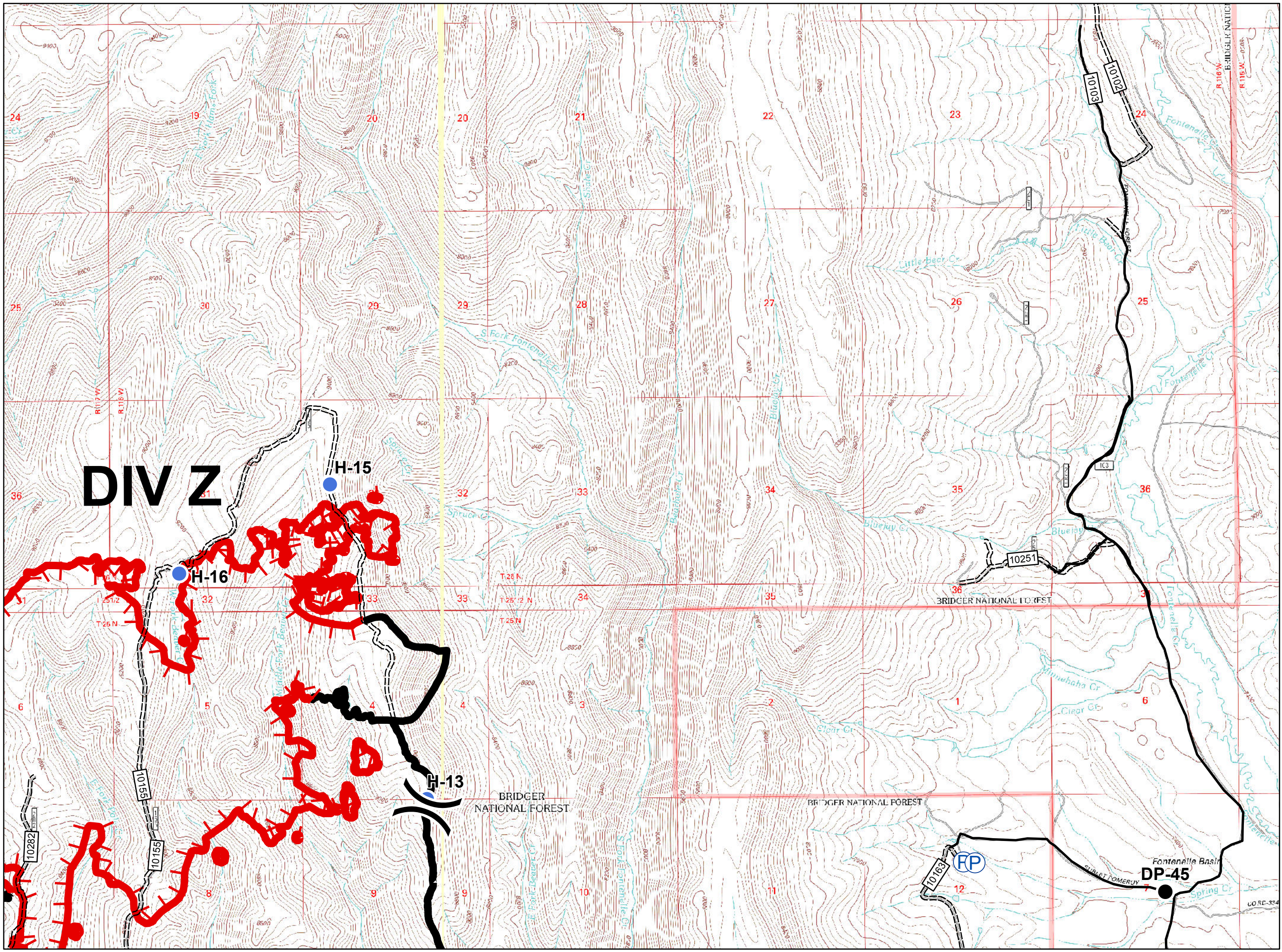
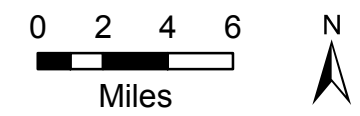
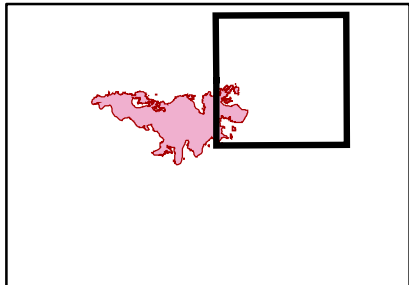
- Helispot
- P Pump
- Division Break
- Uncontrolled Fire Edge
- Completed Line
- Completed Hand Line
- Planned Fire Line
- Planned Secondary Line
- HIGH CLEARANCE ROAD





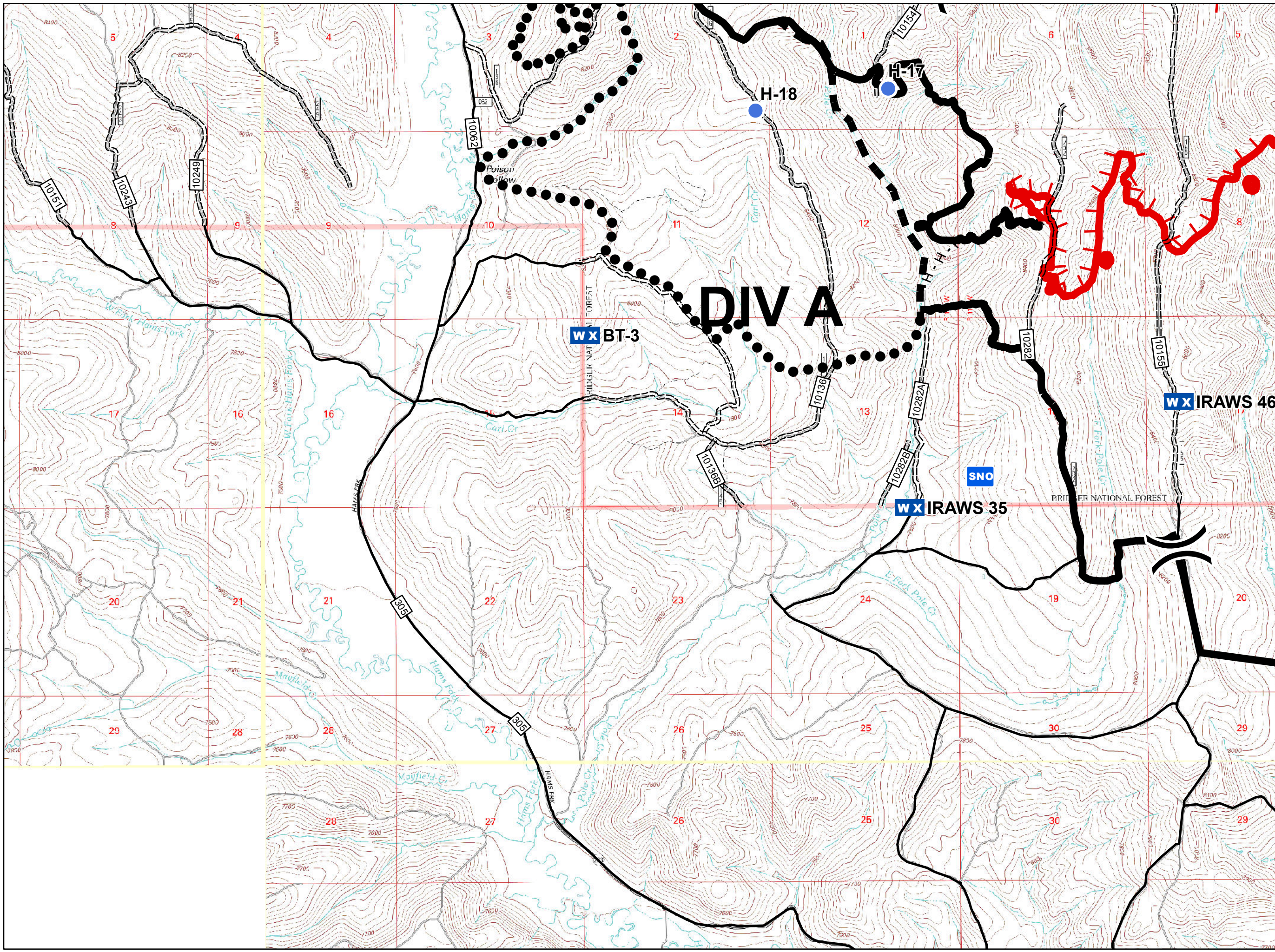
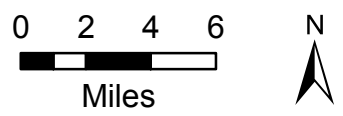
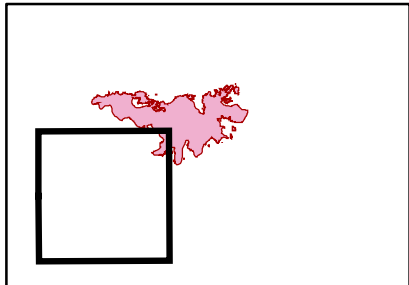
- Drop Point
- Helispot
- Ⓟ Pump
- ⎓ Division Break

- ▬ Uncontrolled Fire Edge
- ▬ Completed Line
- H · H · Completed Hand Line
- ▬ ALL VEHICLE ROAD
- ▬▬▬ HIGH CLEARANCE ROAD



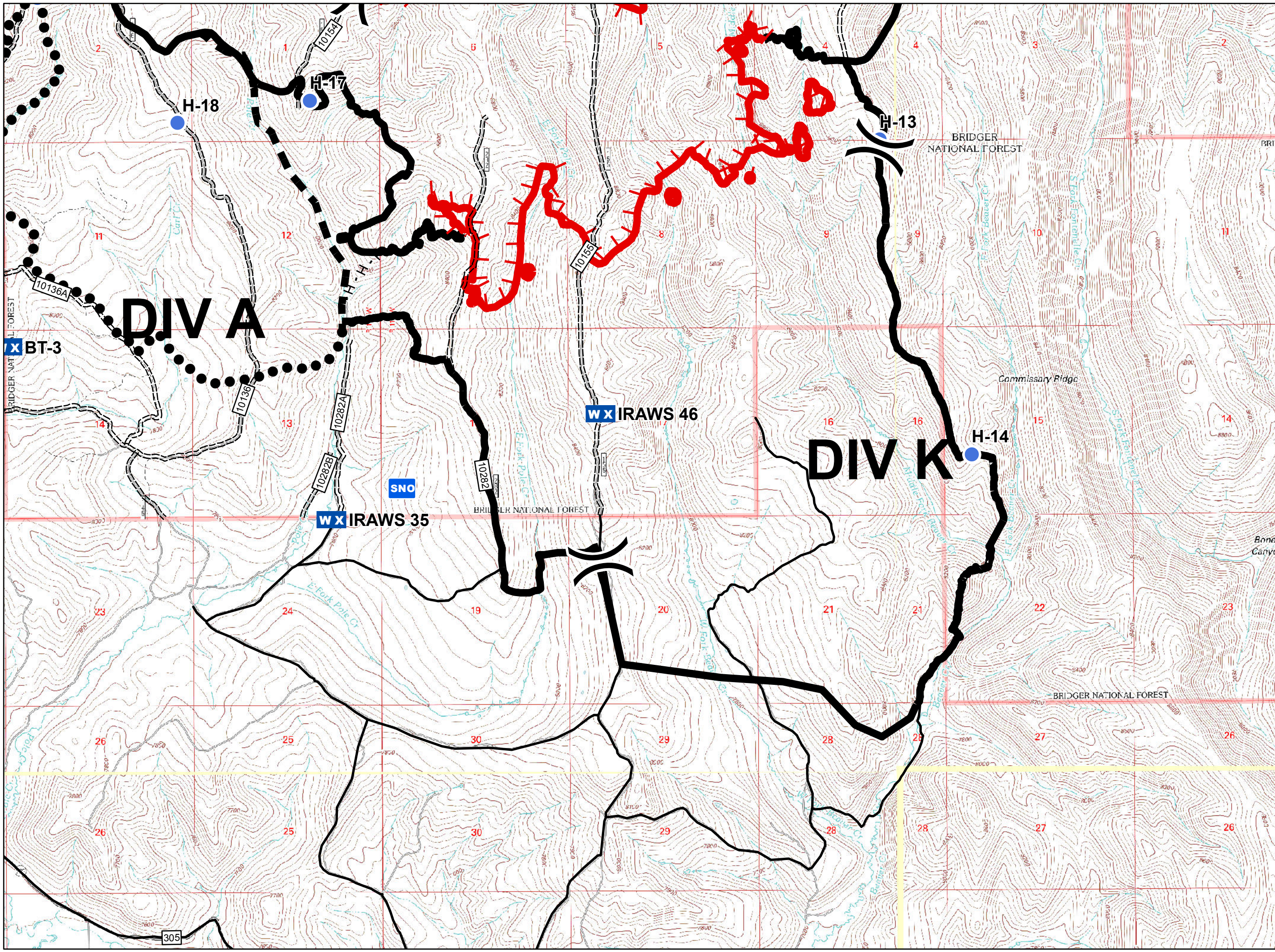
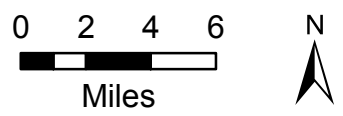
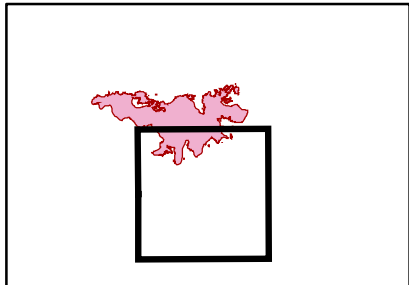


- Helispot
- WX Mobile Weather Unit
- Division Break
- Uncontrolled Fire Edge
- Completed Line
- Completed Hand Line
- Planned Fire Line
- Planned Secondary Line
- ALL VEHICLE ROAD
- HIGH CLEARANCE ROAD
- SNO Snotel Station





- Helispot
- WX Mobile Weather Unit
- Division Break
- Uncontrolled Fire Edge
- Completed Line
- Completed Hand Line
- Planned Fire Line
- Planned Secondary Line
- HIGH CLEARANCE ROAD
- SNO Snotel Station





- Drop Point
- Helispot
- Ⓟ Pump
- Ⓡ Repeater
- ⎵ Division Break

- ▬ Uncontrolled Fire Edge
- ▬ Completed Line
- ▬▬▬ HIGH CLEARANCE ROAD

