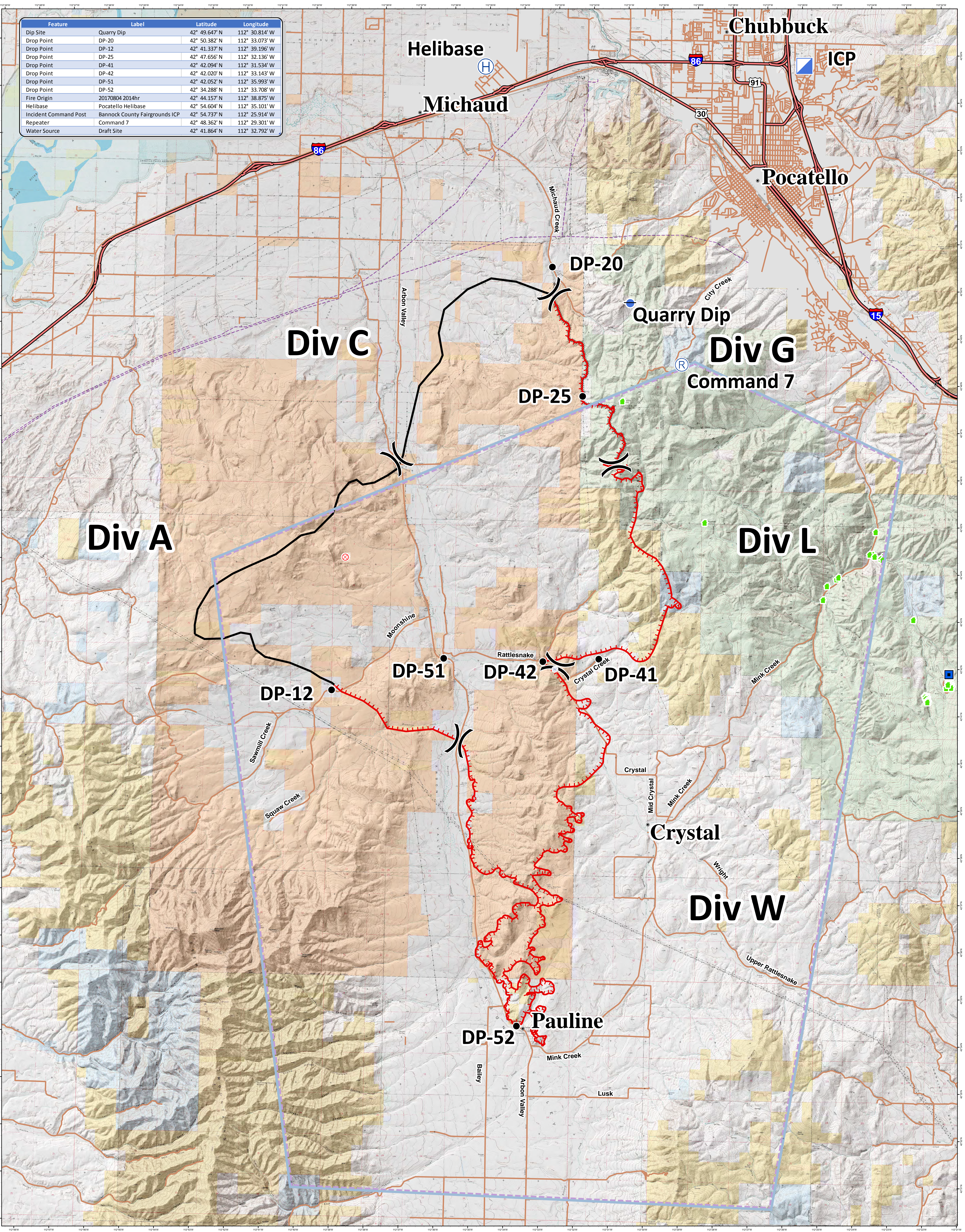


Feature	Label	Latitude	Longitude
Dip Site	Quarry Dip	42° 49.647' N	112° 30.814' W
Drop Point	DP-20	42° 50.382' N	112° 33.073' W
Drop Point	DP-12	42° 41.337' N	112° 39.196' W
Drop Point	DP-25	42° 47.656' N	112° 32.136' W
Drop Point	DP-41	42° 42.094' N	112° 31.534' W
Drop Point	DP-42	42° 42.020' N	112° 33.143' W
Drop Point	DP-51	42° 42.052' N	112° 35.993' W
Drop Point	DP-52	42° 34.288' N	112° 33.708' W
Fire Origin	20170804 2014hr	42° 44.157' N	112° 38.875' W
Helibase	Pocatello Helibase	42° 54.604' N	112° 35.101' W
Incident Command Post	Bannock County Fairgrounds ICP	42° 54.737' N	112° 25.914' W
Repeater	Command 7	42° 48.362' N	112° 29.301' W
Water Source	Draft Site	42° 41.864' N	112° 32.792' W



**Powerline Fire
Communication Map
August 8, 2017
52,014 Acres**



- Drop Point
- Ⓜ Helibase
- Ⓜ Repeater
- Ⓜ Dip Site
- Ⓜ Incident Command Post
-) (Division Break
- Uncontrolled Fire Edge
- Completed Line
- Ⓜ Completed Dozer Line
- Ⓜ Completed Hand Line
- Ⓜ Proposed Dozer Line
- Temporary Flight Restriction
- Ⓜ RAWS
- Ⓜ Admin Sites
- Powerlines
- Pipelines

- Owner**
- BLM
 - BOR
 - HSTRCWTR
 - Indian Reservation

- OTHER**
- PRIVATE
 - State
 - USFS

