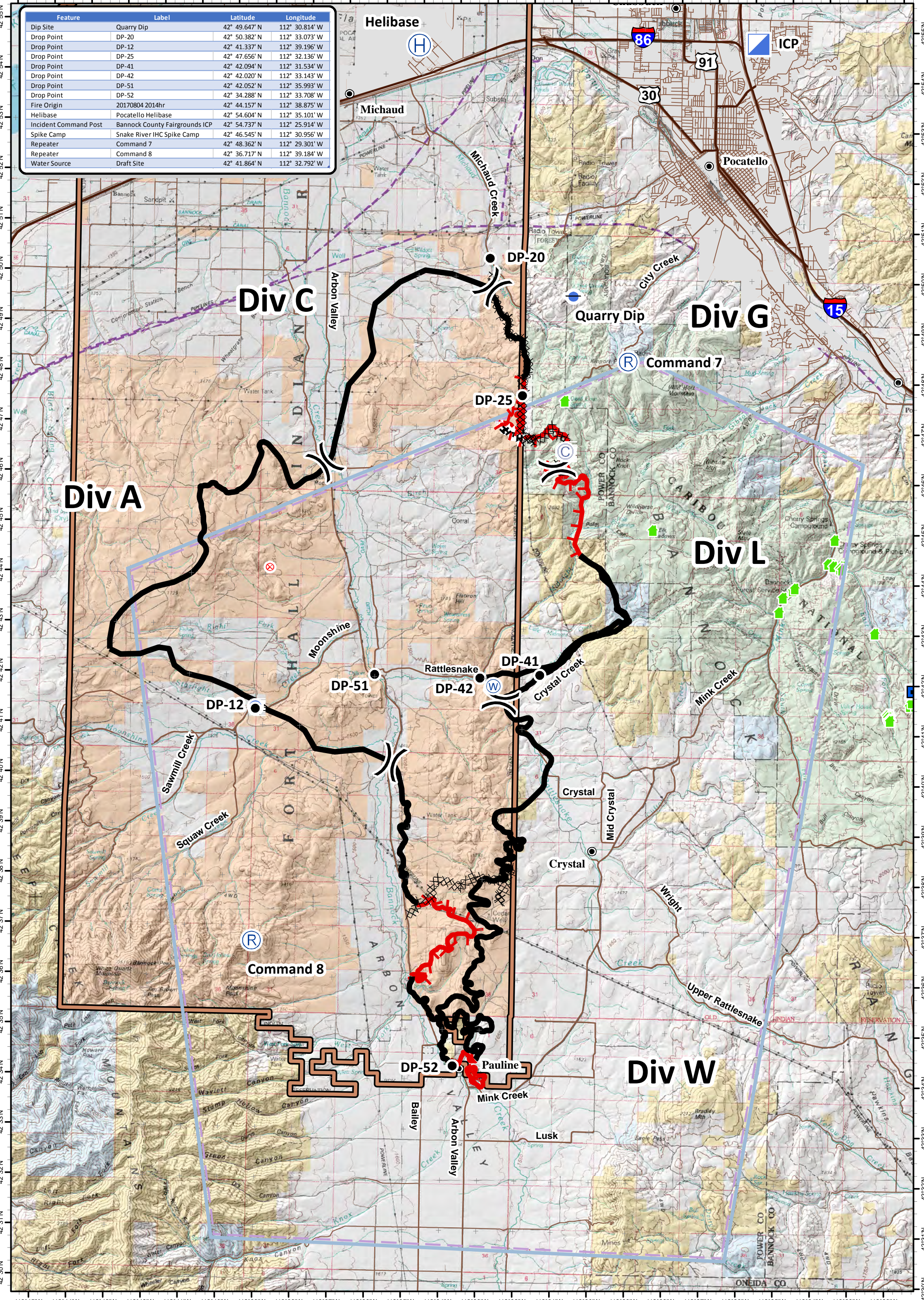


Feature	Label	Latitude	Longitude
Dip Site	Quarry Dip	42° 49.647' N	112° 30.814' W
Drop Point	DP-20	42° 50.382' N	112° 33.073' W
Drop Point	DP-12	42° 41.337' N	112° 39.196' W
Drop Point	DP-25	42° 47.656' N	112° 32.136' W
Drop Point	DP-41	42° 42.094' N	112° 31.534' W
Drop Point	DP-42	42° 42.020' N	112° 33.143' W
Drop Point	DP-51	42° 42.052' N	112° 35.993' W
Drop Point	DP-52	42° 34.288' N	112° 33.708' W
Fire Origin	20170804 2014hr	42° 44.157' N	112° 38.875' W
Helibase	Pocatello Helibase	42° 54.604' N	112° 35.101' W
Incident Command Post	Bannock County Fairgrounds ICP	42° 54.737' N	112° 25.914' W
Spike Camp	Snake River IHC Spike Camp	42° 46.545' N	112° 30.956' W
Repeater	Command 7	42° 48.362' N	112° 29.301' W
Repeater	Command 8	42° 36.717' N	112° 39.184' W
Water Source	Draft Site	42° 41.864' N	112° 32.792' W



Powerline Fire
Air Ops Map
August 9, 2017
53,076 Acres

Division Break	Dip Site	Completed Line	RAWS	BLM	OTHER
ICP	Repeater	Uncontrolled Fire Edge	Admin Sites	BOR	PRIVATE
Drop Point	Helibase	Completed Dozer Line	Powerlines	HSTRCWR	State
		Fort Hall Indian Reservation	Pipelines	Indian Reservation	USFS