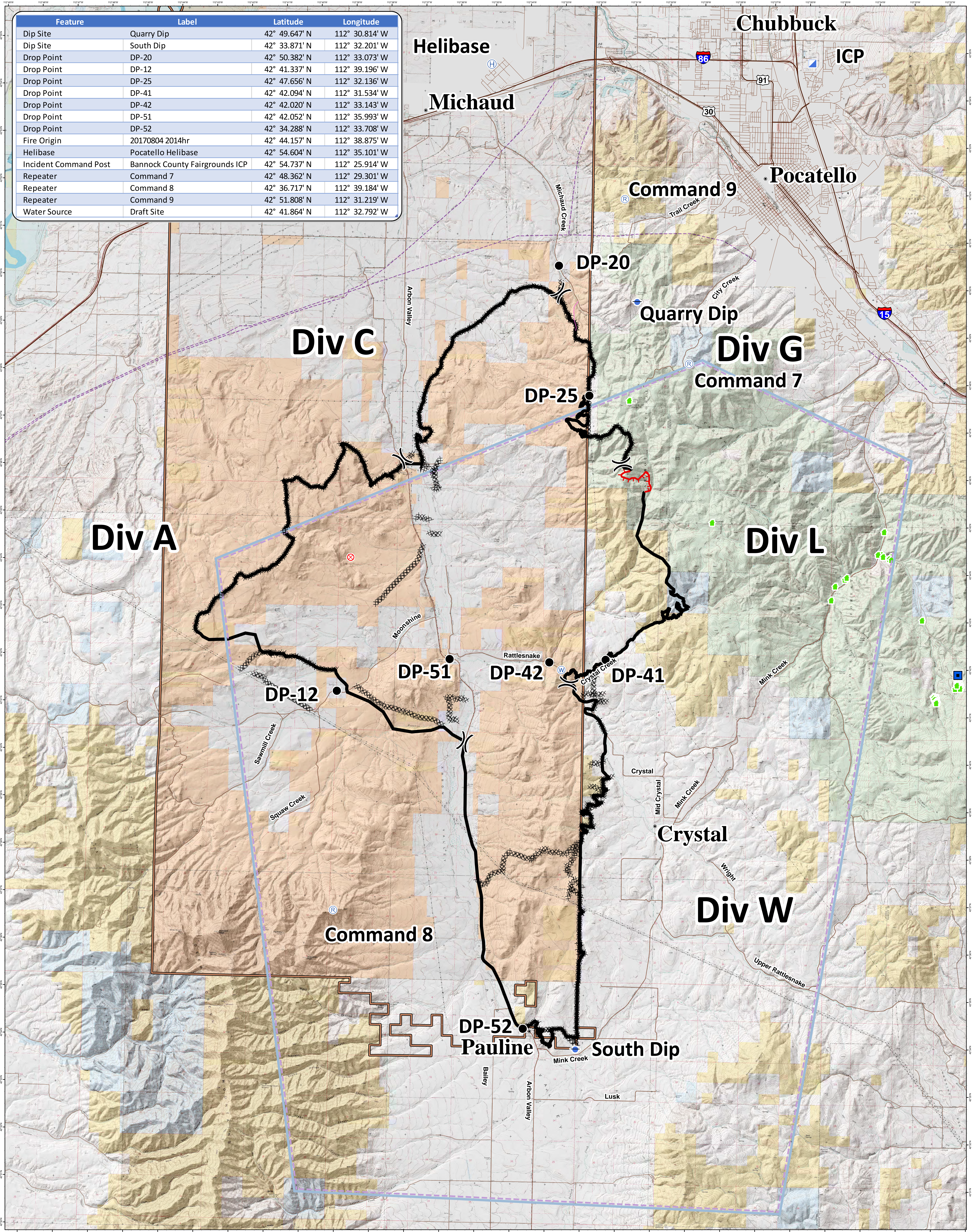


Feature	Label	Latitude	Longitude
Dip Site	Quarry Dip	42° 49.647' N	112° 30.814' W
Dip Site	South Dip	42° 33.871' N	112° 32.201' W
Drop Point	DP-20	42° 50.382' N	112° 33.073' W
Drop Point	DP-12	42° 41.337' N	112° 39.196' W
Drop Point	DP-25	42° 47.656' N	112° 32.136' W
Drop Point	DP-41	42° 42.094' N	112° 31.534' W
Drop Point	DP-42	42° 42.020' N	112° 33.143' W
Drop Point	DP-51	42° 42.052' N	112° 35.993' W
Drop Point	DP-52	42° 34.288' N	112° 33.708' W
Fire Origin	20170804 2014hr	42° 44.157' N	112° 38.875' W
Helibase	Pocatello Helibase	42° 54.604' N	112° 35.101' W
Incident Command Post	Bannock County Fairgrounds ICP	42° 54.737' N	112° 25.914' W
Repeater	Command 7	42° 48.362' N	112° 29.301' W
Repeater	Command 8	42° 36.717' N	112° 39.184' W
Repeater	Command 9	42° 51.808' N	112° 31.219' W
Water Source	Draft Site	42° 41.864' N	112° 32.792' W



**Powerline Fire  
Communication Map  
August 11, 2017  
55,787 Acres**



- Drop Point
- Ⓜ Helibase
- Ⓡ Repeater
- Ⓦ Dip Site
- Ⓜ Incident Command Post
- Ⓜ Division Break
- Uncontrolled Fire Edge
- Completed Line
- ⓧ Completed Dozer Line
- ⓧ Completed Hand Line
- ⓧ Proposed Dozer Line
- ⓧ Temporary Flight Restriction
- Ⓜ Fort Hall Indian Reservation
- Ⓜ RAWS
- Ⓜ Admin Sites
- Powerlines
- Pipelines
- Owner**
- BLM
- BOR
- HSTRCWTR
- Indian Reservation
- OTHER
- PRIVATE
- State
- USFS

