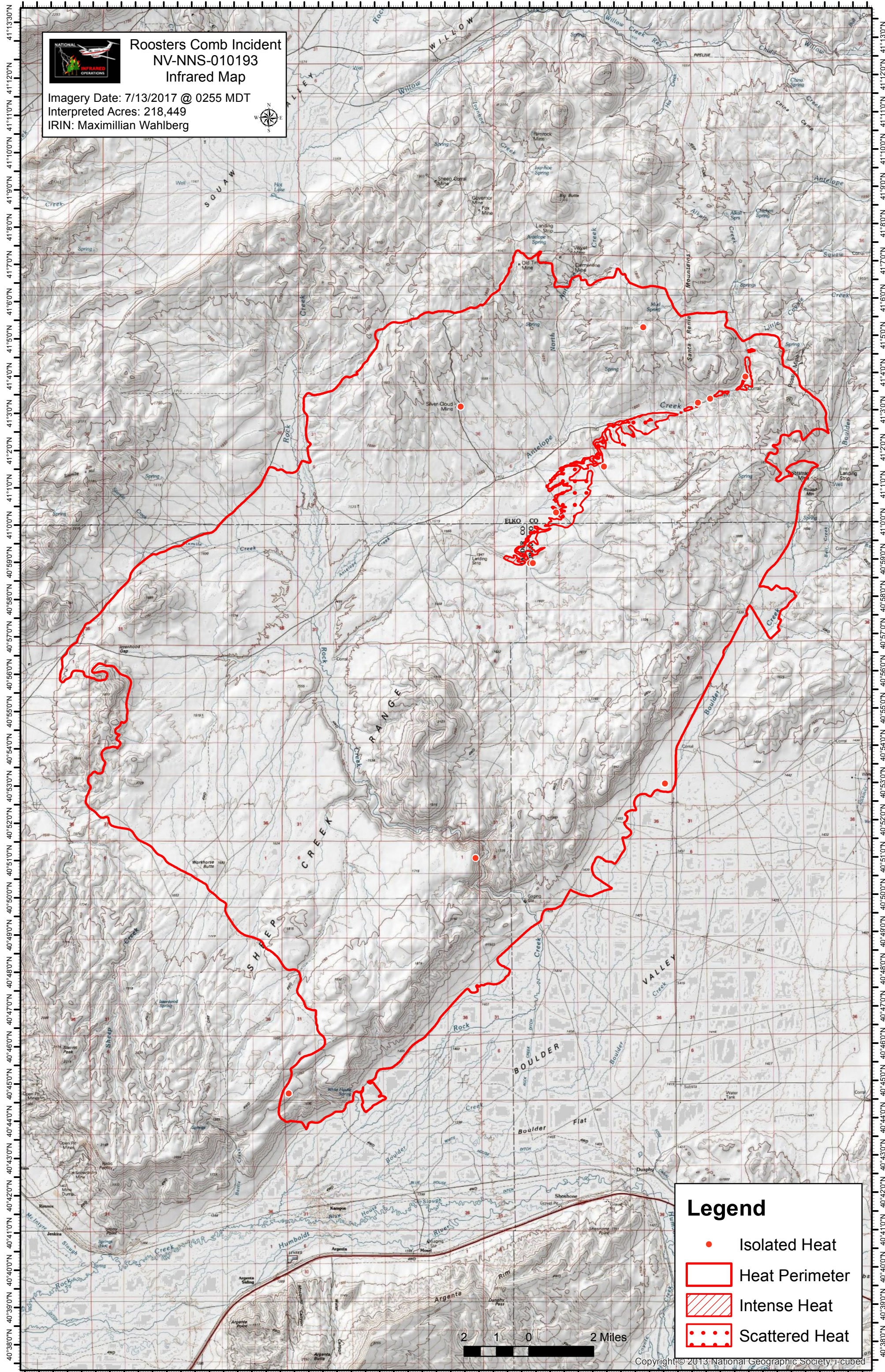


116°53'0"W 116°51'30"W 116°50'0"W 116°48'30"W 116°47'0"W 116°45'30"W 116°44'0"W 116°42'30"W 116°41'0"W 116°39'30"W 116°38'0"W 116°36'30"W 116°35'0"W 116°33'30"W 116°32'0"W 116°30'30"W 116°29'0"W 116°27'30"W 116°26'0"W 116°24'30"W 116°23'0"W



# Roosters Comb Incident NV-NNS-010193 Infrared Map

Imagery Date: 7/13/2017 @ 0255 MDT  
Interpreted Acres: 218,449  
IRIN: Maximillian Wahlberg



### Legend

- Isolated Heat
- Heat Perimeter
- Intense Heat
- Scattered Heat

2 1 0 2 Miles

Copyright © 2013 National Geographic Society, i-cubed

116°52'0"W 116°50'30"W 116°49'0"W 116°47'30"W 116°46'0"W 116°44'30"W 116°43'0"W 116°41'30"W 116°40'0"W 116°38'30"W 116°37'0"W 116°35'30"W 116°34'0"W 116°32'30"W 116°31'0"W 116°29'30"W 116°28'0"W 116°26'30"W 116°25'0"W 116°23'30"W