

Slinkard Incident

CA-OVD-001478

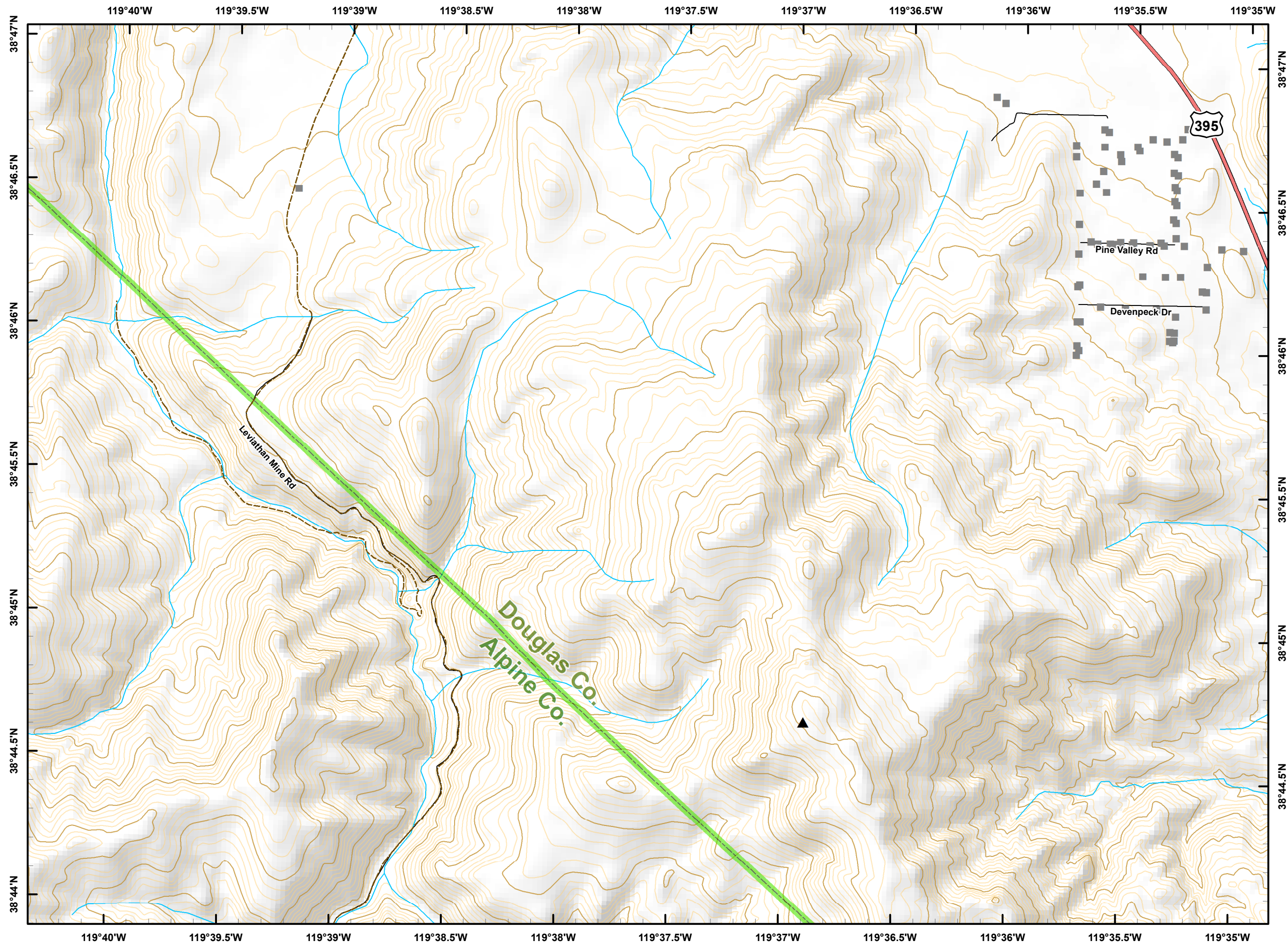
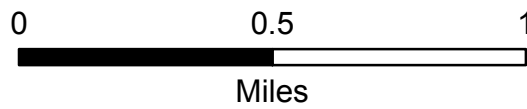
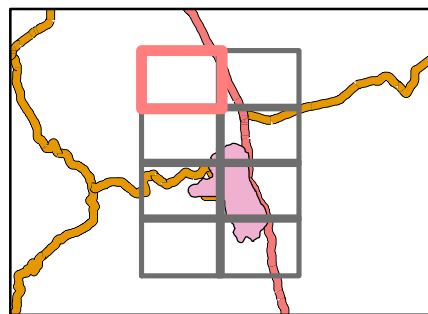
September 4, 2017

IAP



D3

- ▲ Peak
- Structure
- U.S. Highway
- - - FS Road
- Street
- ▭ County Boundary
- River/Stream



Slinkard Incident

CA-OVD-001478

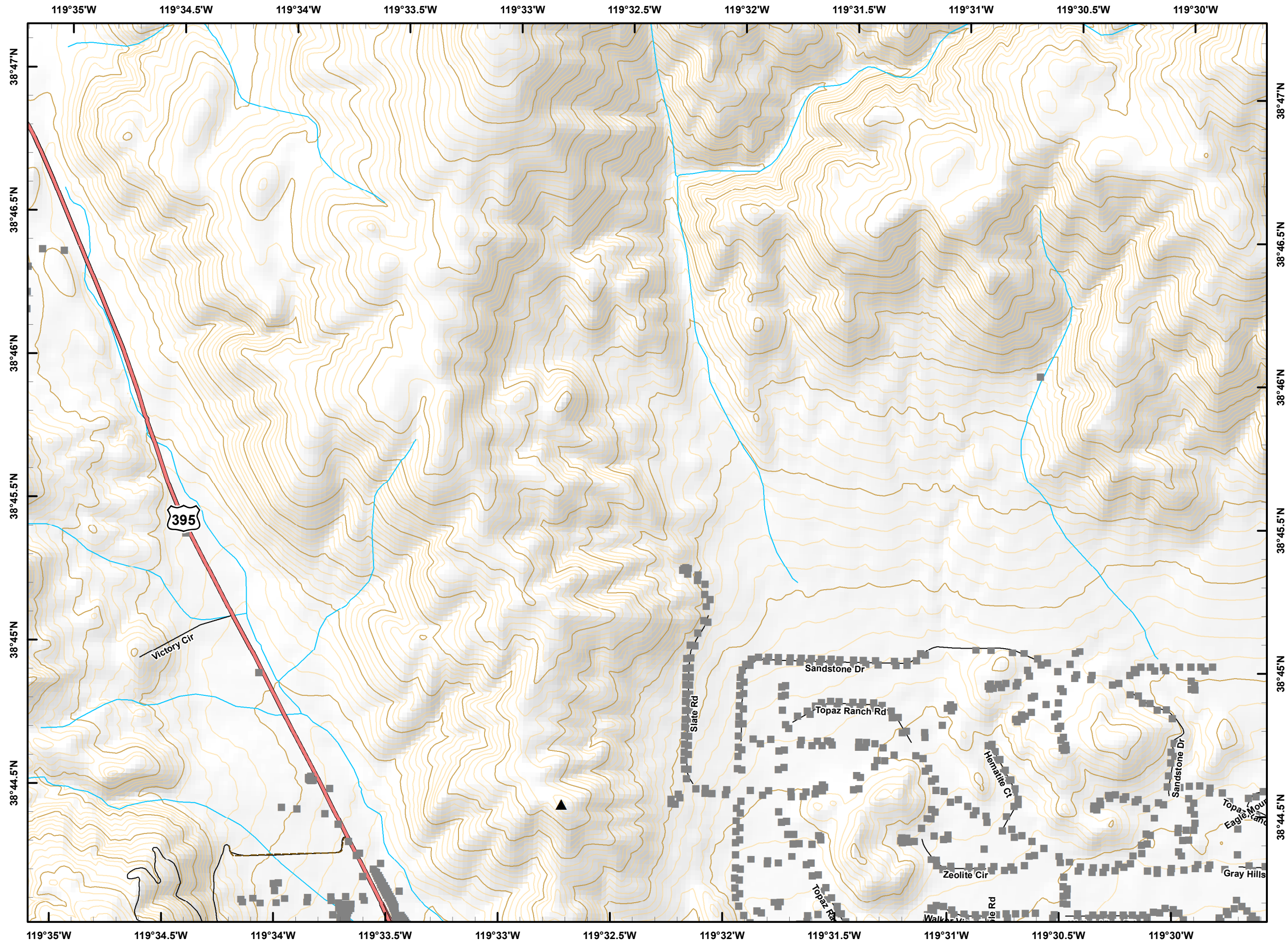
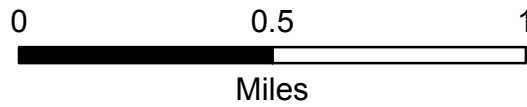
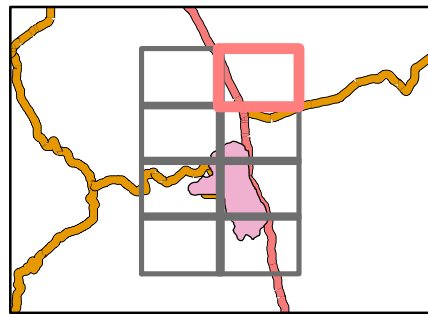
September 4, 2017

IAP



D4

- ▲ Peak
- Structure
- U.S. Highway
- - - FS Road
- Street
- ▭ County Boundary
- River/Stream



Slinkard Incident

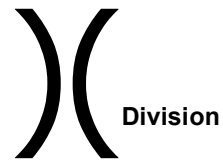
CA-OVD-001478

September 4, 2017

IAP

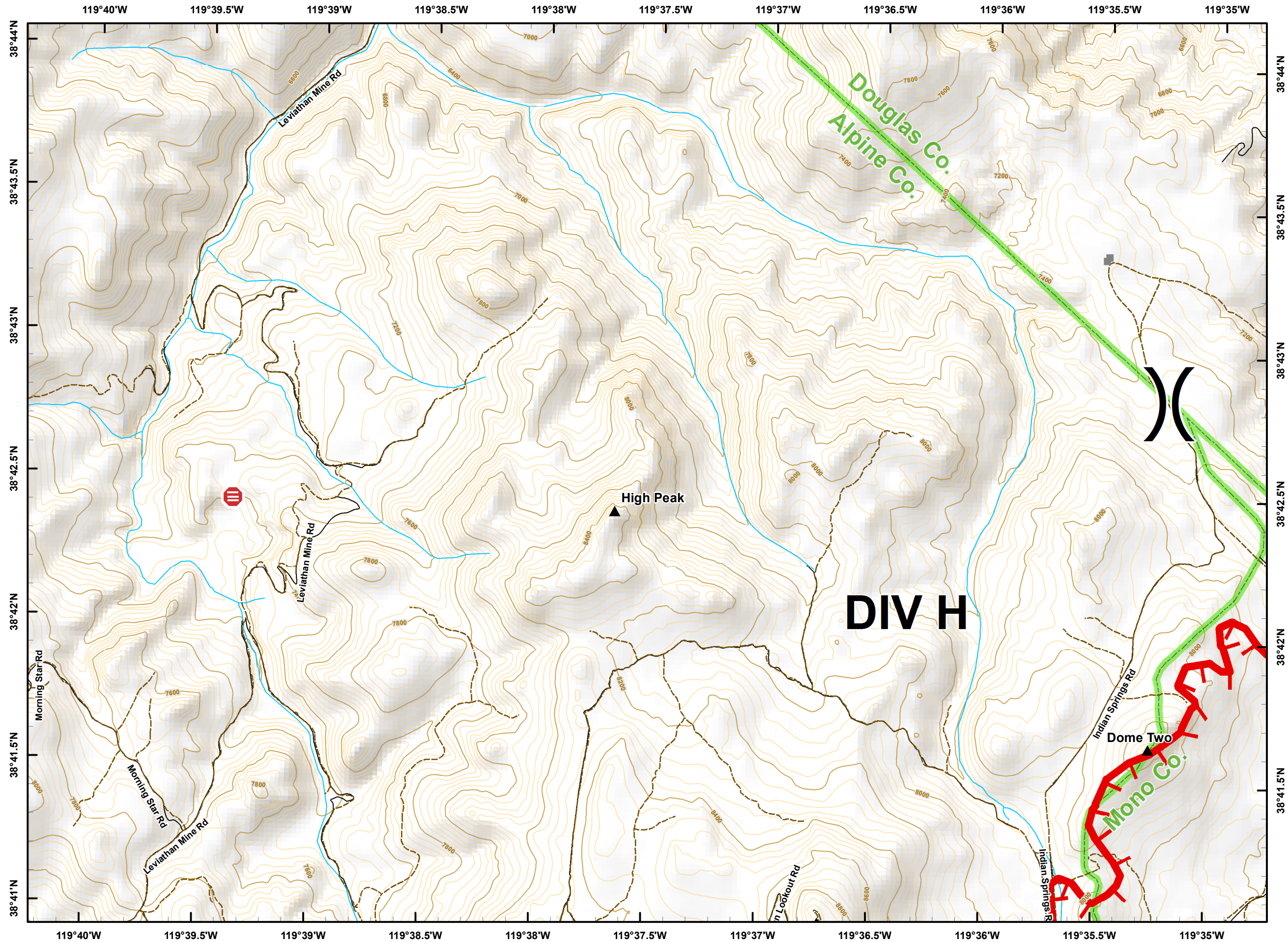
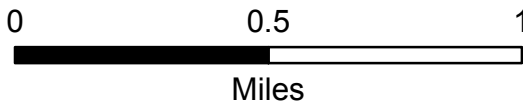
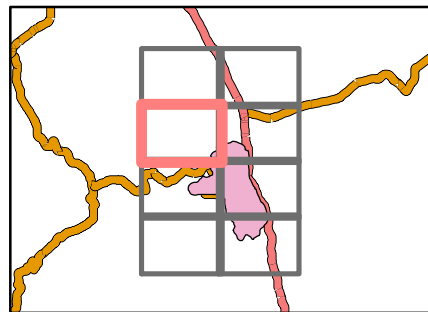


E3



Division

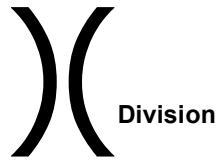
- Life Hazard
- Peak
- Uncontrolled Fire Edge
- Structure
- FS Road
- Street
- County Boundary
- River/Stream



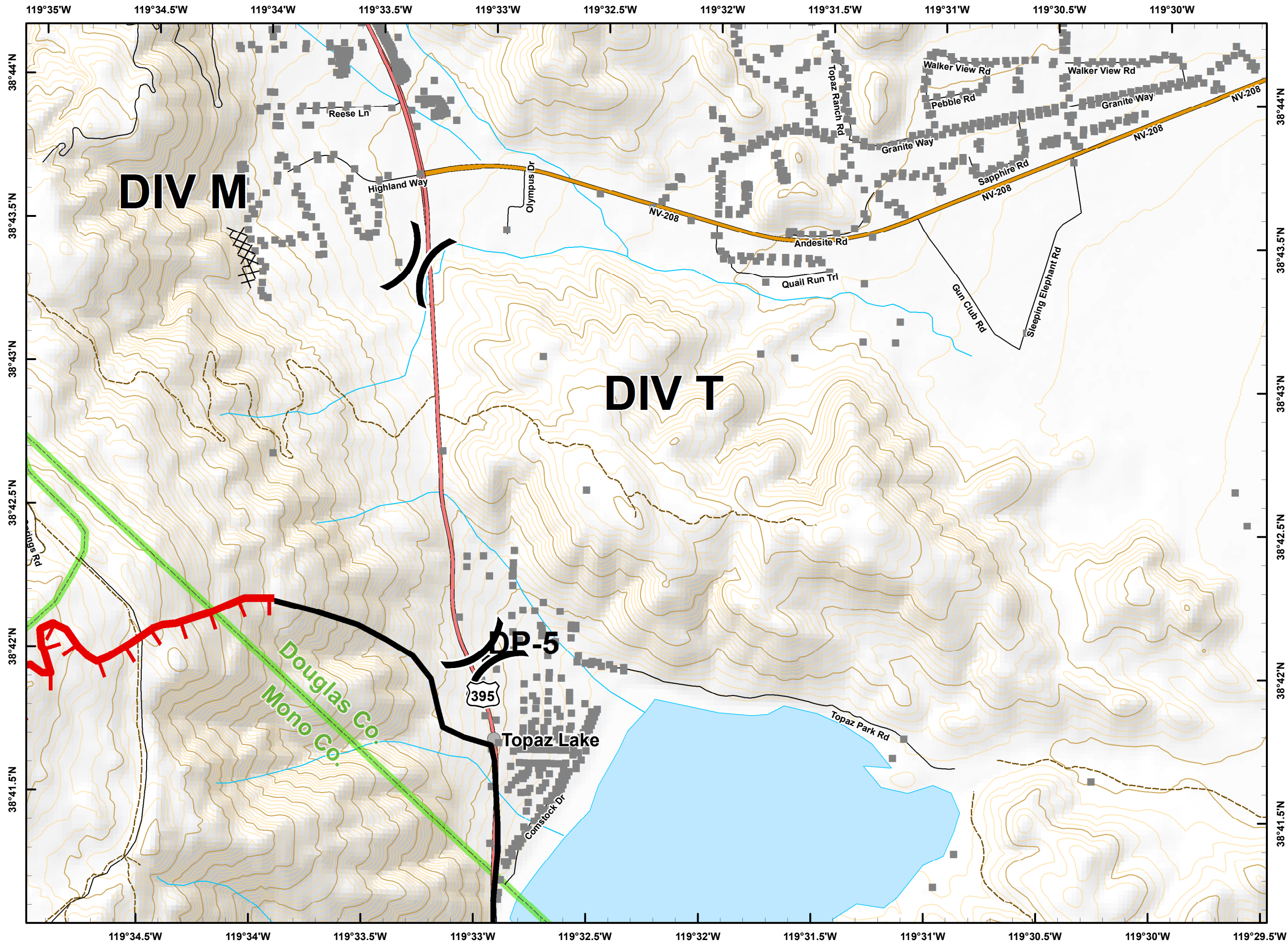
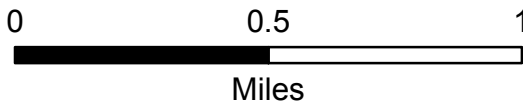
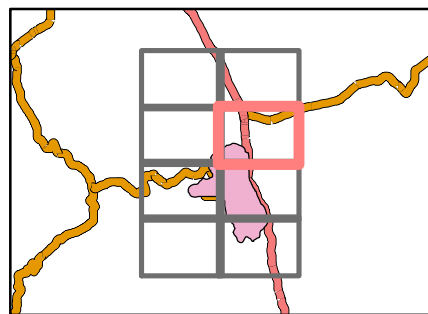
Slinkard Incident
 CA-OVD-001478
 September 4, 2017
 IAP



E4



- Drop Point
- Uncontrolled Fire Edge
- Completed Dozer Line
- Completed Line
- Structure
- City
- U.S. Highway
- State Route
- FS Road
- Street
- County Boundary
- Water Body
- River/Stream



Slinkard Incident

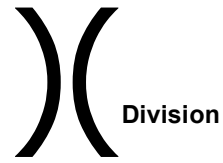
CA-OVD-001478

September 4, 2017

IAP

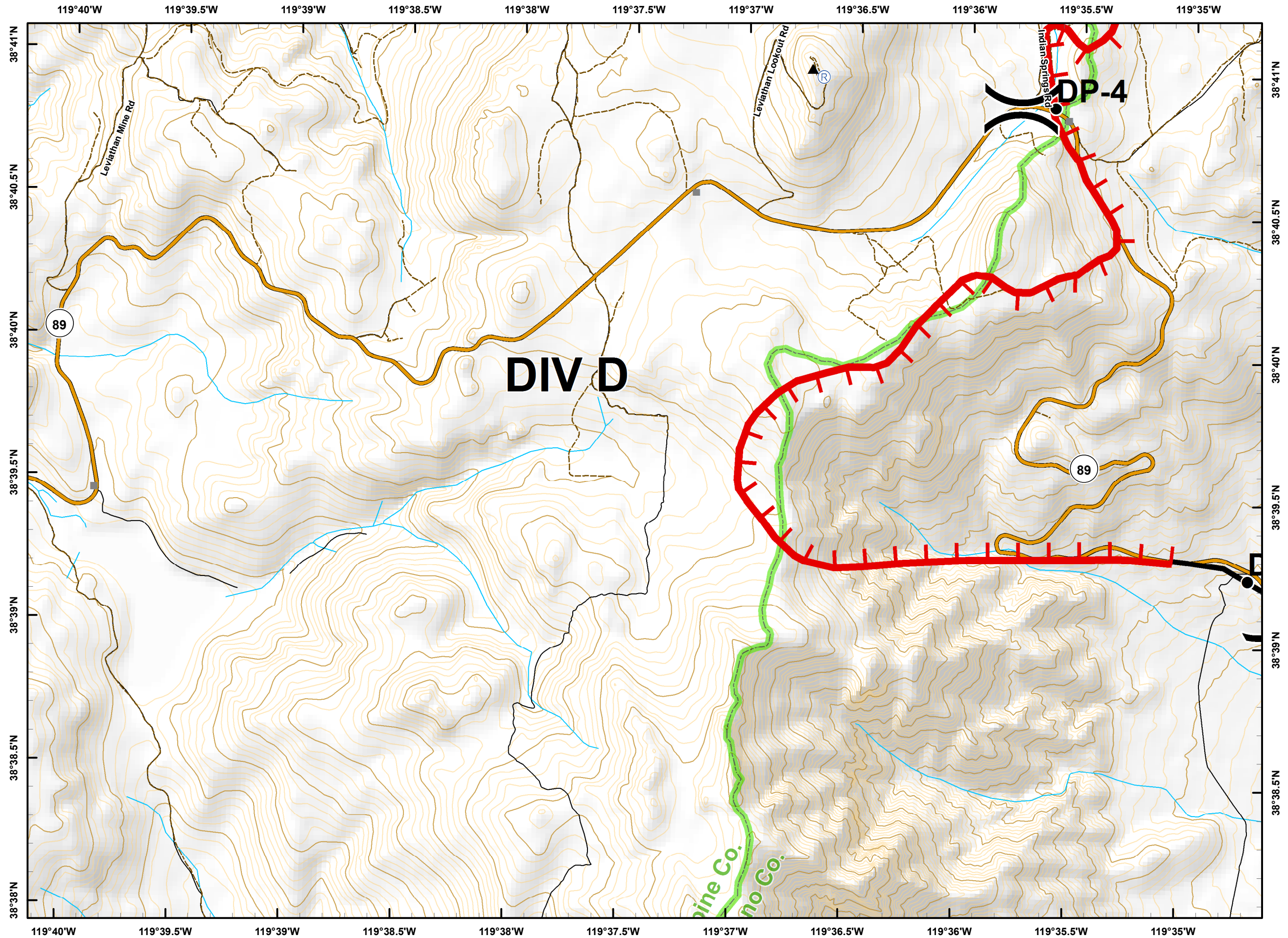
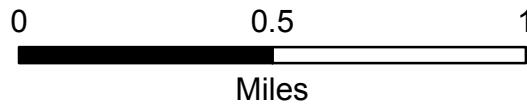


F3



Division

- Drop Point
- Ⓡ Repeater
- ▲ Peak
- ▬ Uncontrolled Fire Edge
- ▬ Completed Line
- Structure
- ▬ State Route
- - - FS Road
- Street
- ▭ County Boundary
- River/Stream



Slinkard Incident

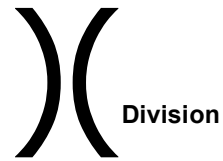
CA-OVD-001478

September 4, 2017

IAP

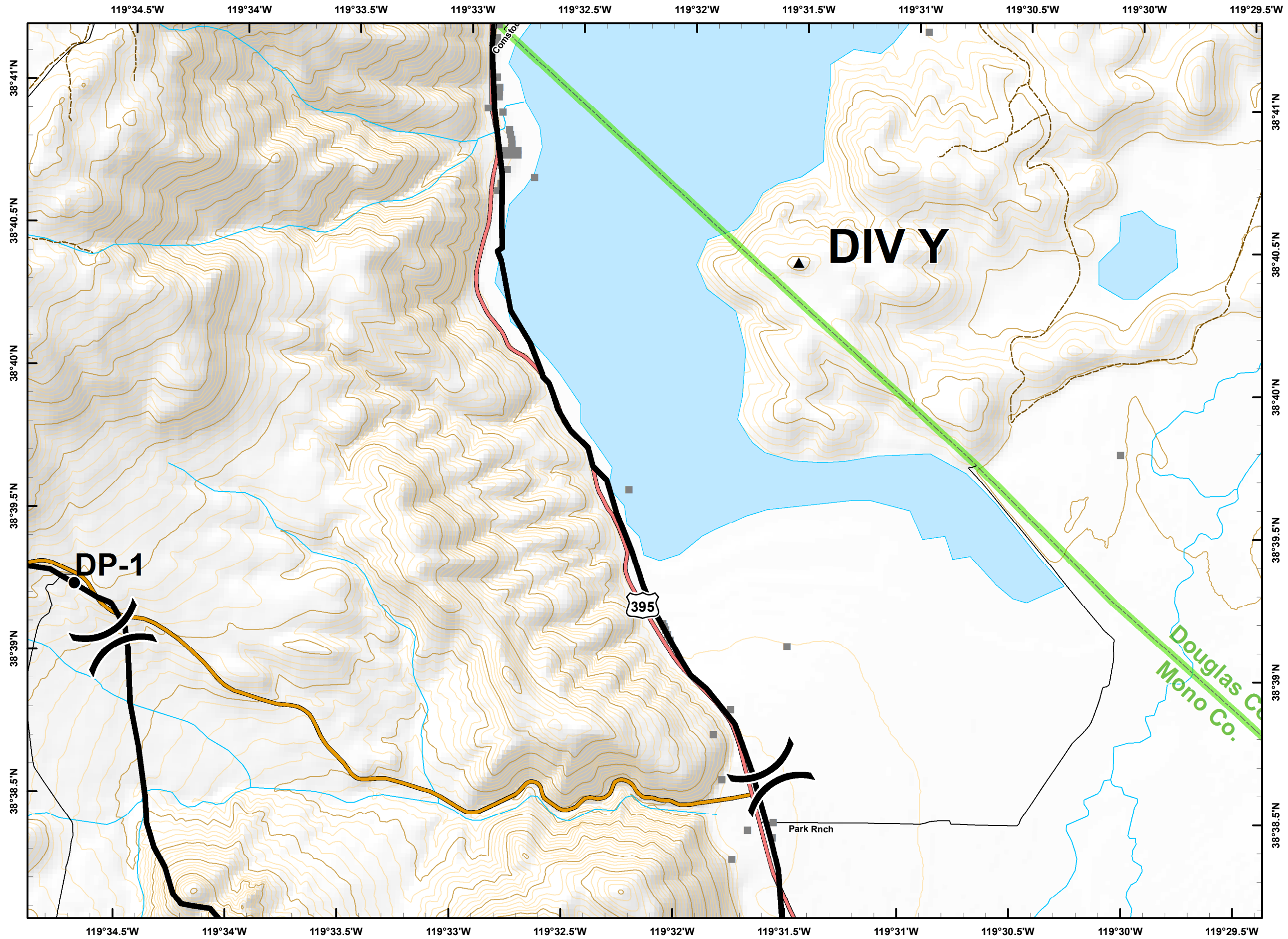
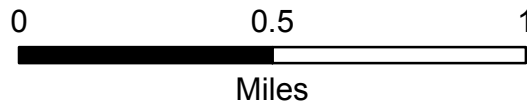
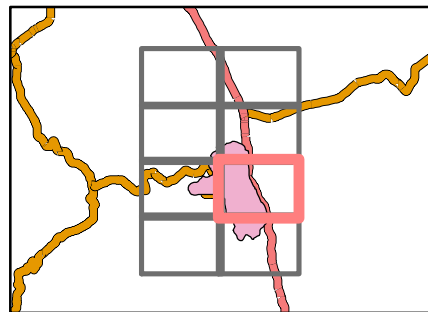


F4



Division

- Drop Point
- ▲ Peak
- Completed Line
- Structure
- U.S. Highway
- State Route
- - - FS Road
- Street
- ▭ County Boundary
- Water Body
- River/Stream

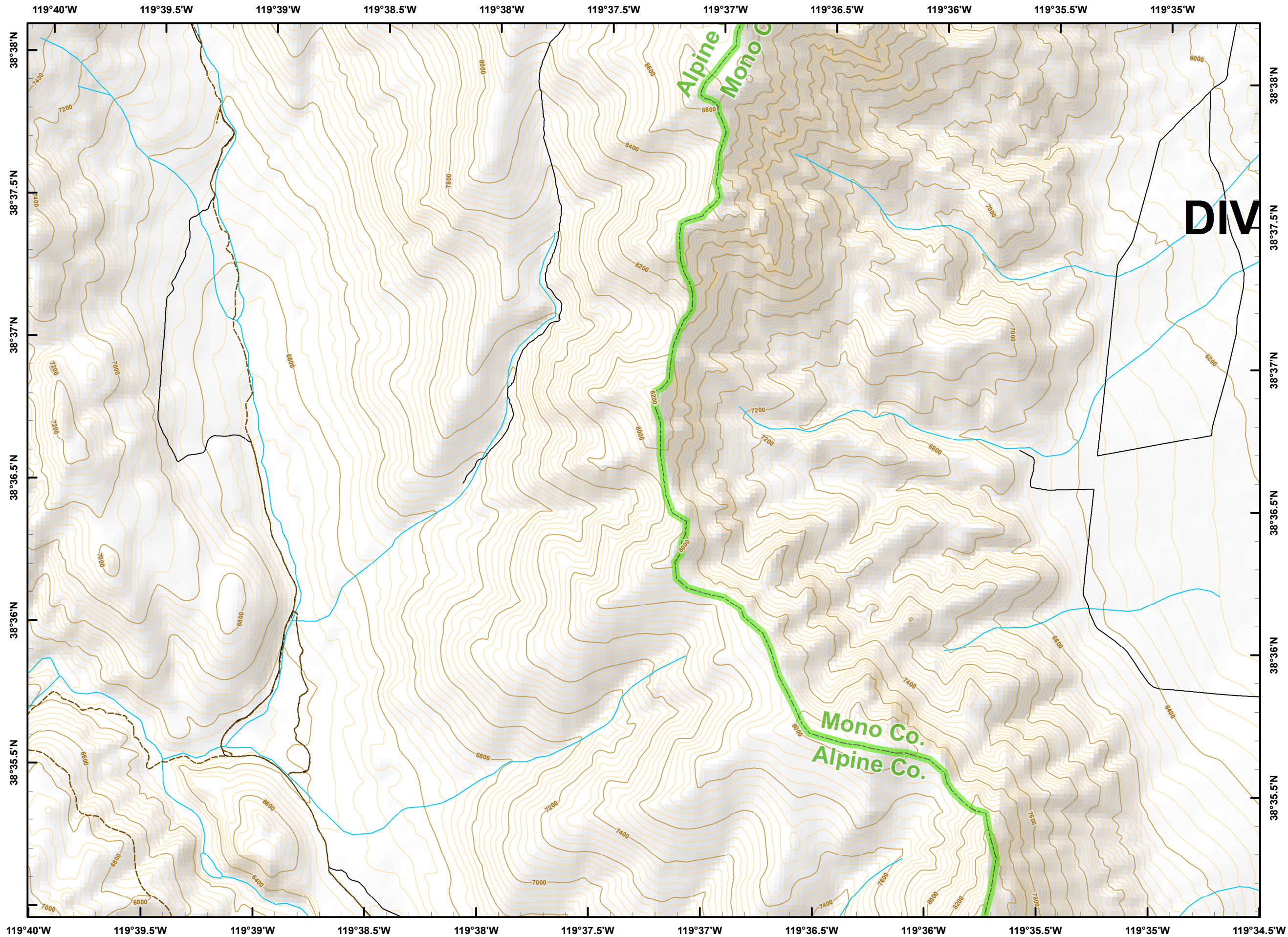
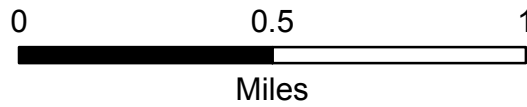
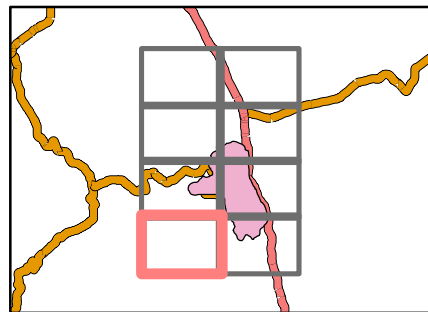


Slinkard Incident
CA-OVD-001478
September 4, 2017
IAP



G3

- FS Road
- Street
- ▭ County Boundary
- River/Stream



Slinkard Incident

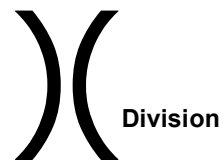
CA-OVD-001478

September 4, 2017

IAP



G4



Division

- Drop Point
- ▬ Uncontrolled Fire Edge
- ▬ Completed Line
- Structure
- City
- ▬ U.S. Highway
- ▬ Street
- ▭ County Boundary
- ▬ River/Stream

