

# Slinkard Incident

CA-OVD-001478

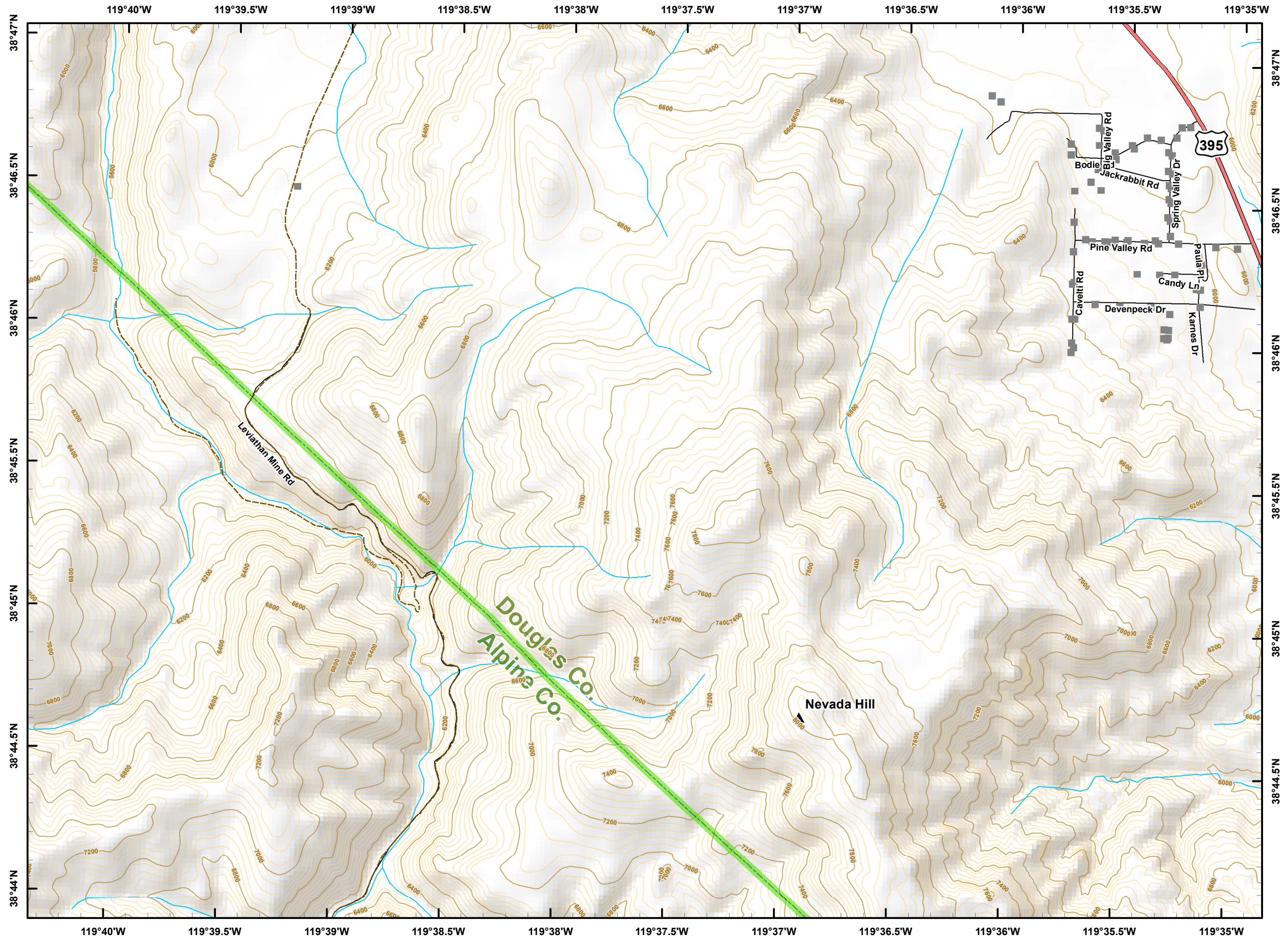
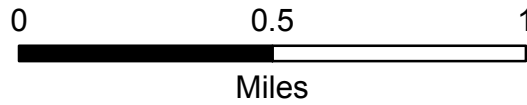
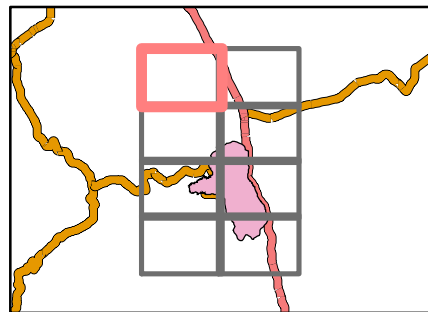
September 5, 2017

IAP



D3

- ▲ Peak
- Structure
- U.S. Highway
- - - FS Road
- Street
- ▭ County Boundary
- River/Stream



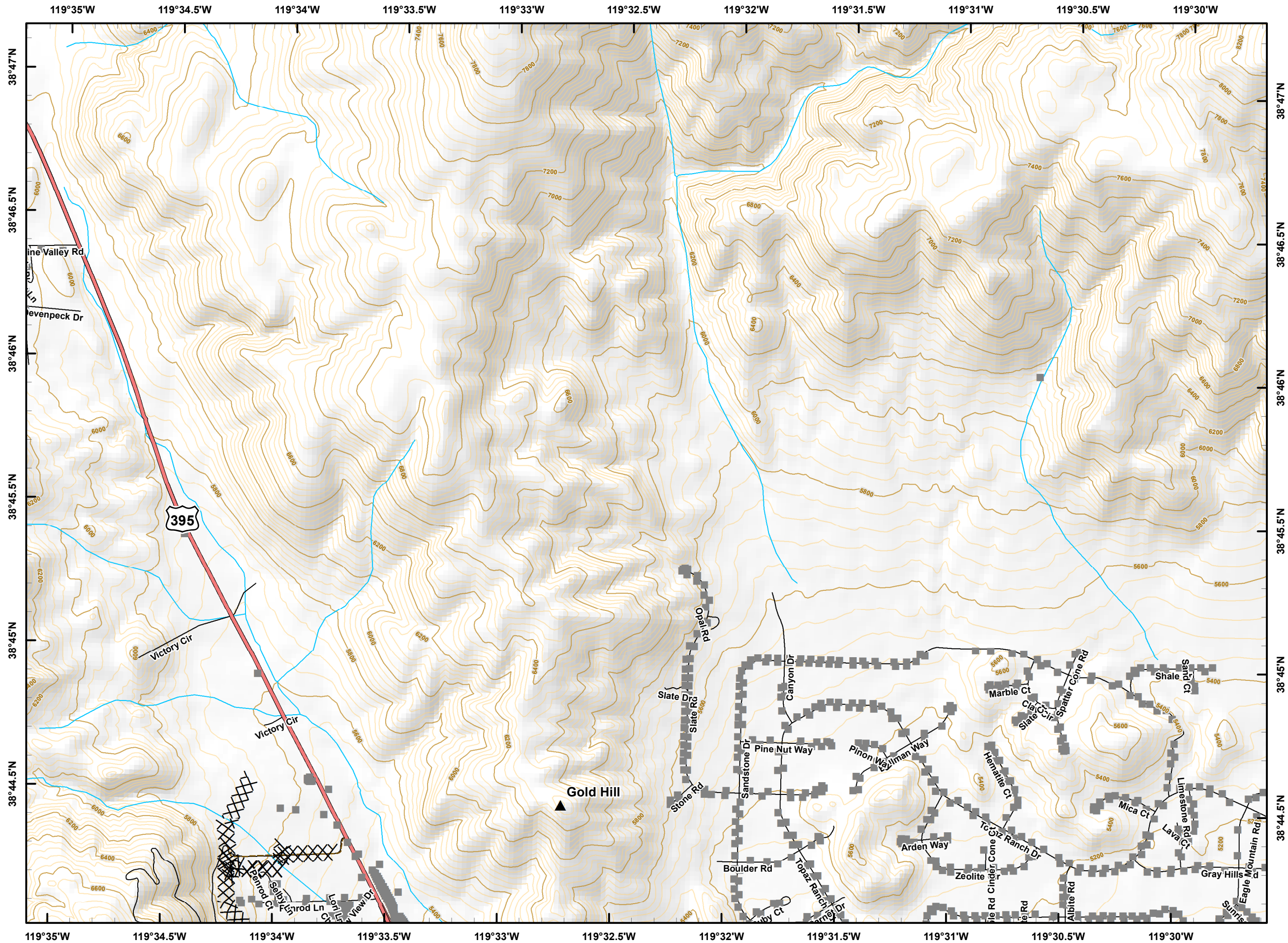
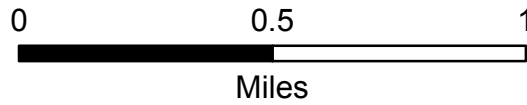
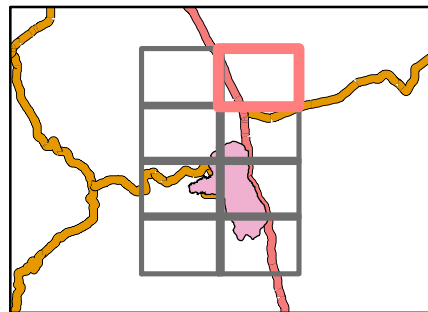


**Slinkard Incident**  
 CA-OVD-001478  
 September 5, 2017  
 IAP



**D4**

- ▲ Peak
- XXXX Completed Dozer Line
- Structure
- U.S. Highway
- - - FS Road
- Street
- ▭ County Boundary
- River/Stream

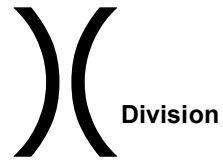




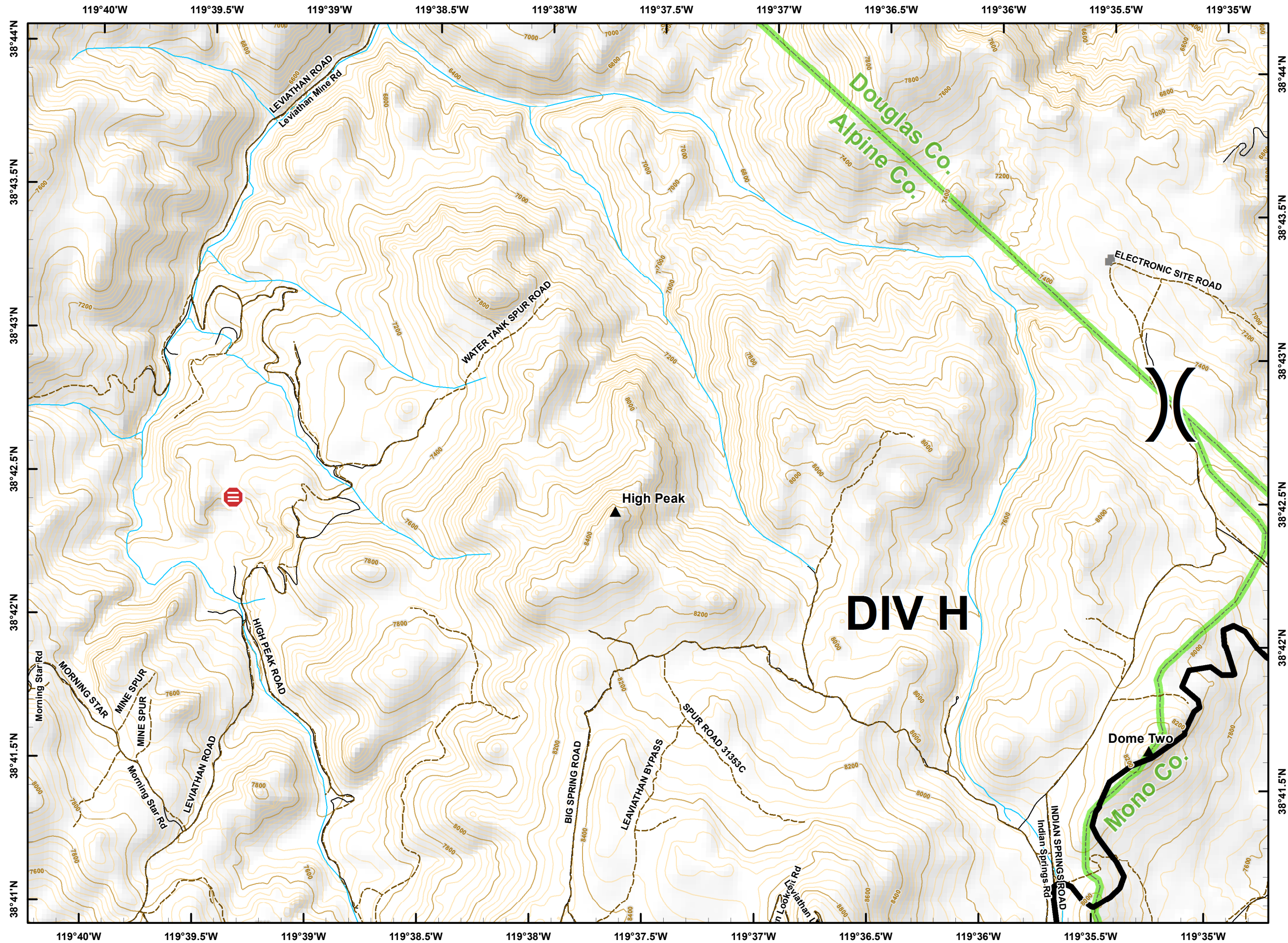
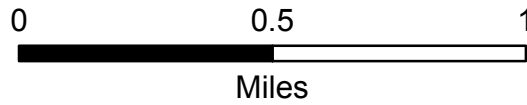
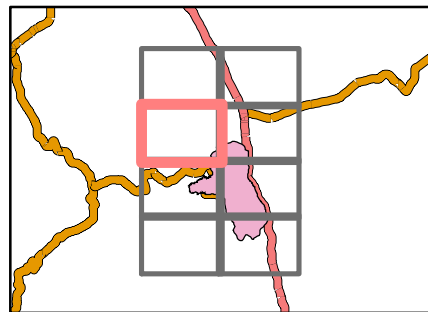
**Slinkard Incident**  
 CA-OVD-001478  
 September 5, 2017  
 IAP



**E3**

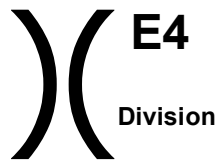


- Life Hazard
- Peak
- Completed Line
- Structure
- FS Road
- Street
- County Boundary
- River/Stream

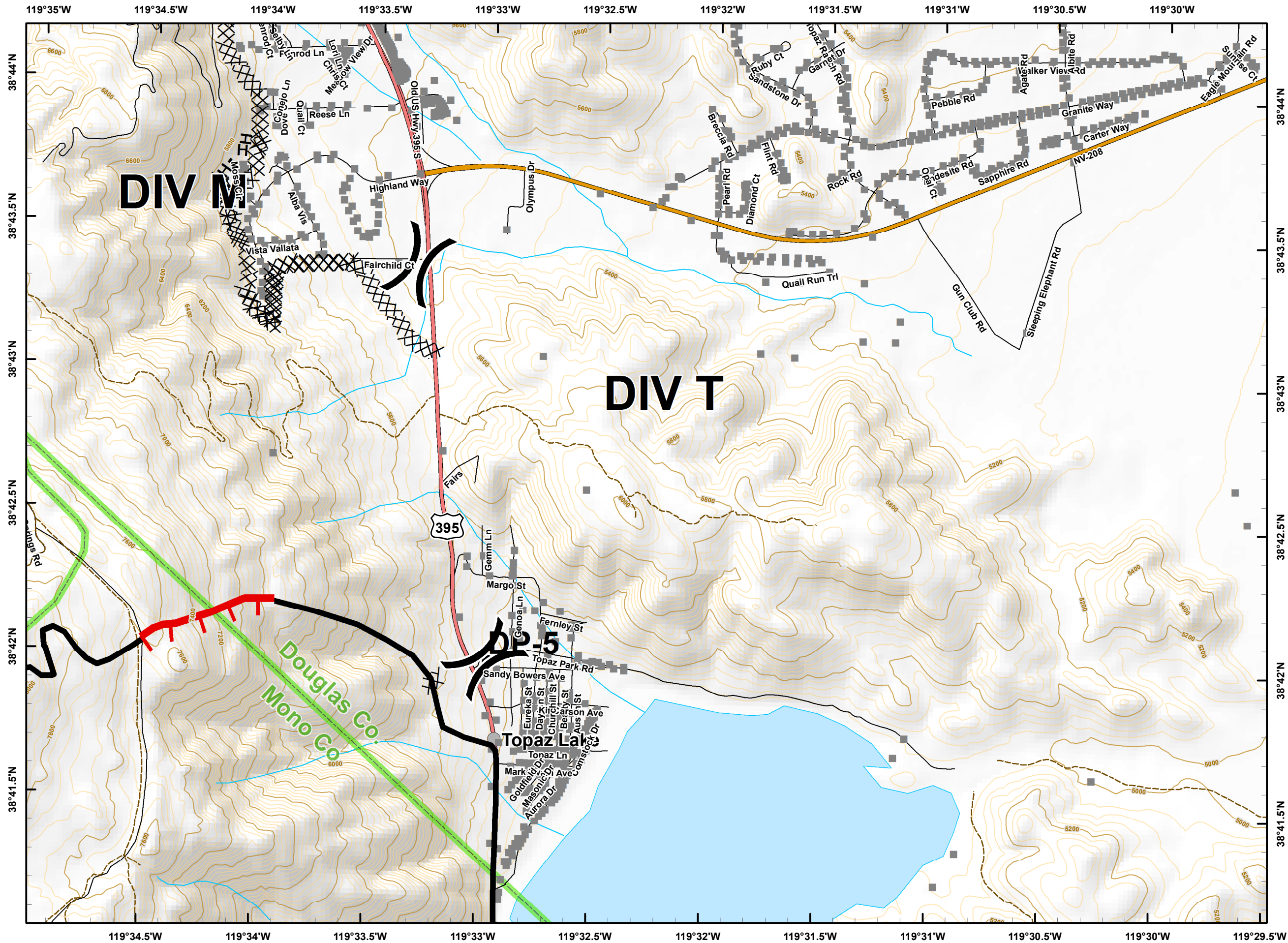
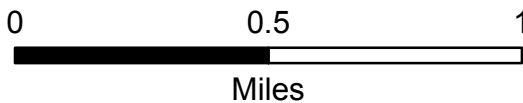
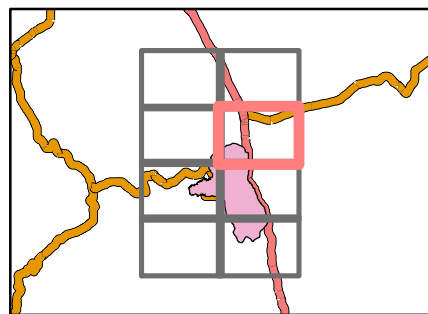




**Slinkard Incident**  
 CA-OVD-001478  
 September 5, 2017  
 IAP



- Drop Point
- ▬ Uncontrolled Fire Edge
- XXXX Completed Dozer Line
- ▬ Completed Line
- H - Hand Line
- Structure
- City
- ▬ U.S. Highway
- ▬ State Route
- - - FS Road
- ▬ Street
- ▭ County Boundary
- ▭ Water Body
- ▬ River/Stream

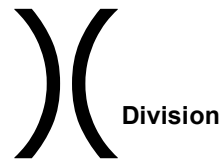




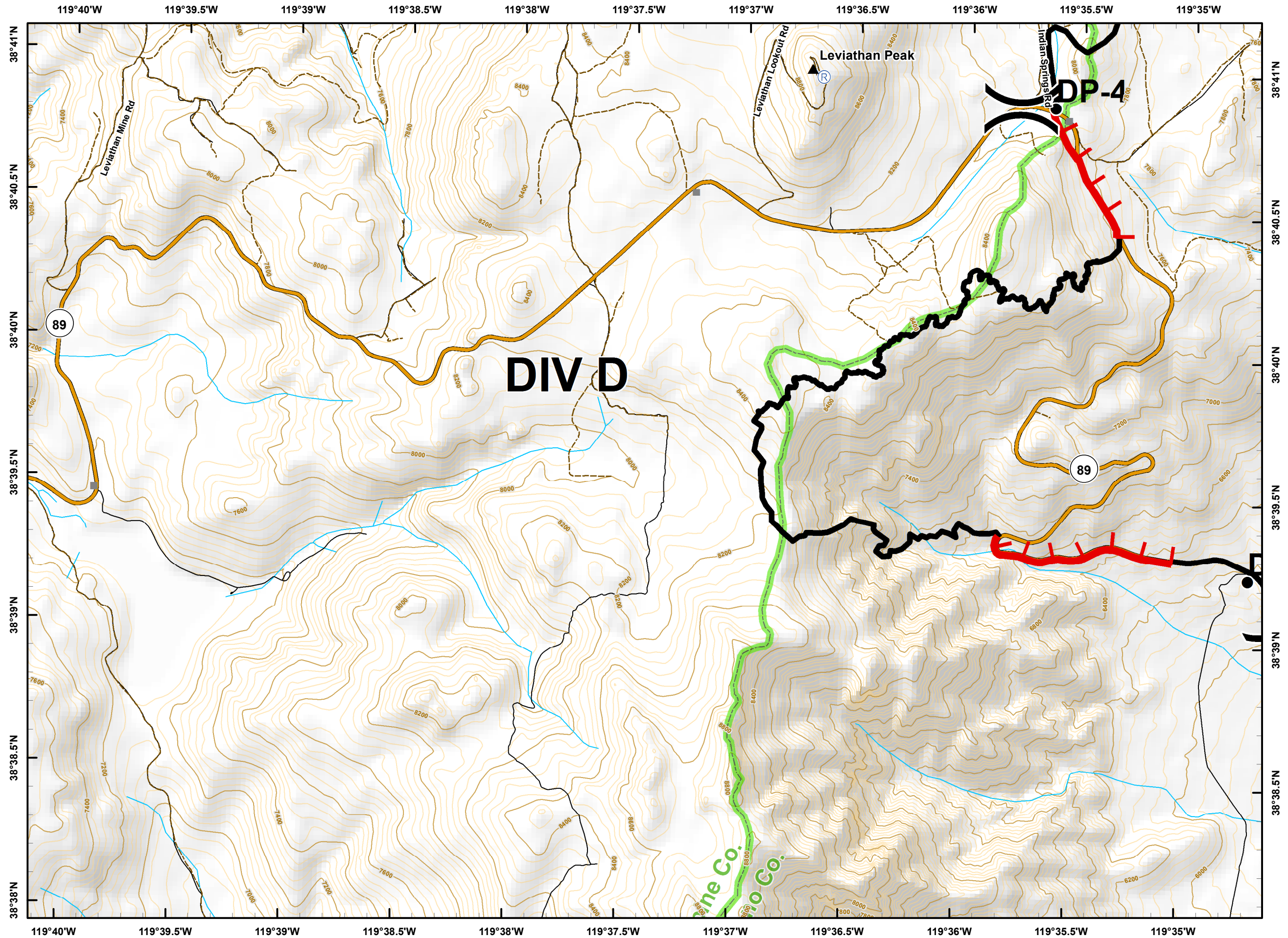
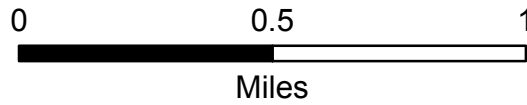
**Slinkard Incident**  
CA-OVD-001478  
September 5, 2017  
IAP



**F3**



- Drop Point
- Ⓡ Repeater
- ▲ Peak
- ▬ Uncontrolled Fire Edge
- ▬ Completed Line
- Structure
- ▬ State Route
- ▬ FS Road
- ▬ Street
- ▭ County Boundary
- ▬ River/Stream





# Slinkard Incident

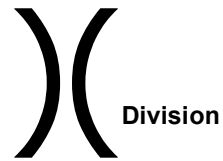
CA-OVD-001478

September 5, 2017

IAP



F4



Division

● Drop Point

▲ Peak

XXXX Completed Dozer Line

— Completed Line

■ Structure

— U.S. Highway

— State Route

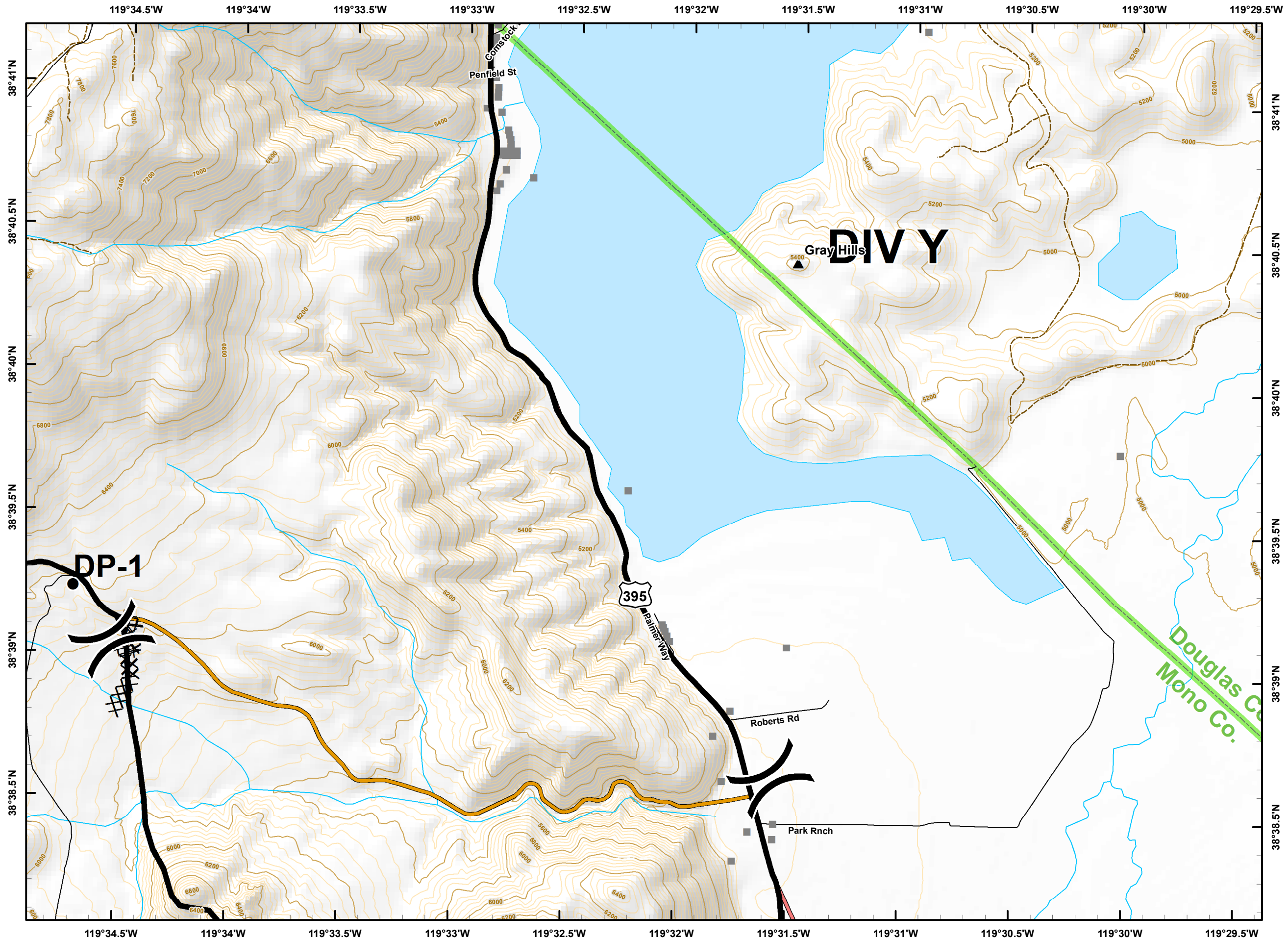
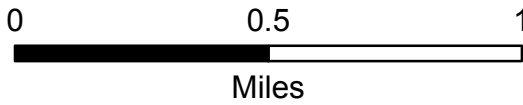
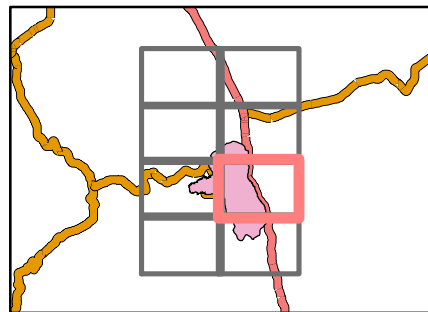
--- FS Road

— Street

▭ County Boundary

Water Body

River/Stream



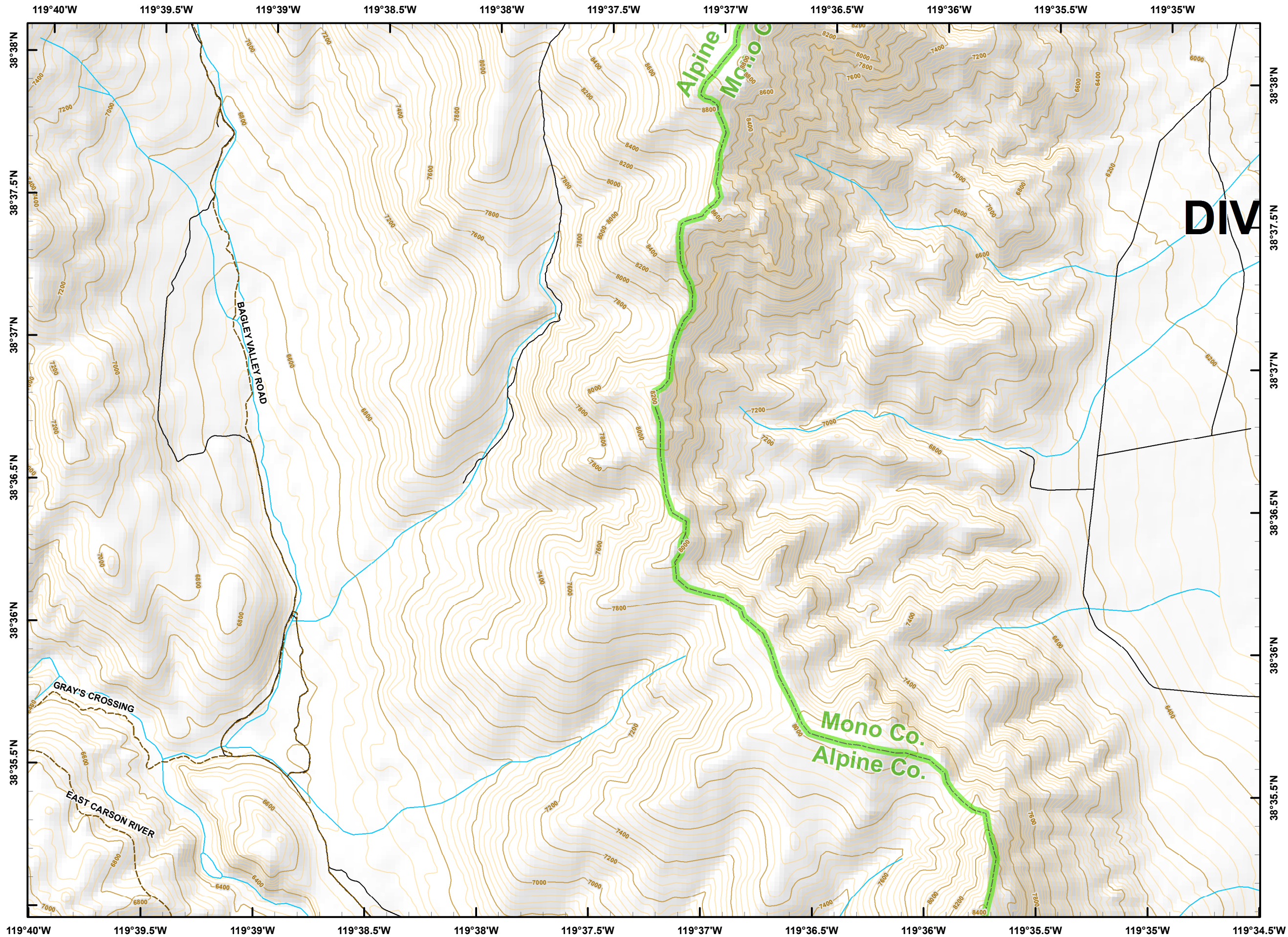
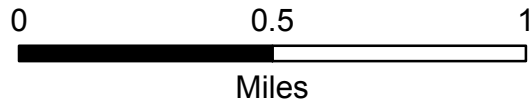
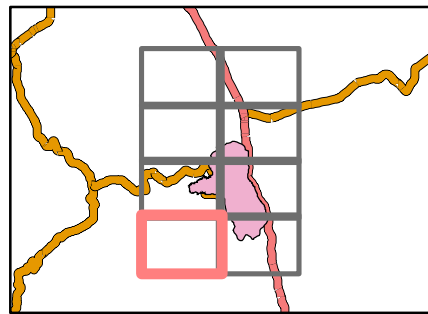


**Slinkard Incident**  
CA-OVD-001478  
September 5, 2017  
IAP



**G3**

- FS Road
- Street
- ▭ County Boundary
- River/Stream

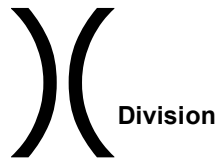




**Slinkard Incident**  
 CA-OVD-001478  
 September 5, 2017  
 IAP



**G4**



Division

- Drop Point
- Uncontrolled Fire Edge
- Completed Dozer Line
- Completed Line
- Structure
- City
- U.S. Highway
- Street
- County Boundary
- River/Stream

