

Tank Hollow Fire
 UT-UWF-000791
Communications
Map
 September 7, 2017
 appx. 8,164 acres

- Incident Command Post
 - (X) Division Break
 - Helibase
 - Helispot
 - ◆ Dip Site
 - ▲ Sling Site
 - Drop Point
 - ⊕ Pump
 - ⊞ Mobile Weather Unit
 - ⊞ Repeater
 - ⊞ Internet Access
 - ⊞ Lookout
 - ⊞ Camera
 - Value at Risk
-
- Uncontrolled Fire Edge
 - Completed Line
 - Completed Dozer Line
 - Completed Hand Line
 - Road as Completed Line
 - Planned Line
 - ||| Proposed Burnout
 - Active Burnout
 - Completed Burnout
 - Temporary Flight Restriction and IA Area
 - Powerlines
 - Powerline Tower
 - Highway
 - Primary Road
 - Road
 - Unclassified Route

Spanish Fork-Springville Airport Unicorn Helibase	40° 2.007'	111° 17.107'
H-10	40° 0.271'	111° 16.186'
H-23	40° 1.217'	111° 10.877'
H-30	39° 59.722'	111° 12.908'
H-35	40° 0.388'	111° 11.472'
H-37	39° 59.867'	111° 11.960'
H-40	39° 59.573'	111° 16.975'
Honey Dip	39° 55.756'	111° 9.376'
Scofield Dip	39° 46.606'	111° 8.932'
Unicorn Dip	40° 1.758'	111° 16.904'
Whiskey Dip	39° 58.311'	111° 12.763'
Sling Site 25	40° 0.771'	111° 11.353'
DP-20	40° 1.323'	111° 14.818'
DP-21	40° 0.559'	111° 15.020'
DP-22	40° 2.129'	111° 12.027'
DP-23	40° 1.382'	111° 10.576'
DP-24	40° 2.010'	111° 14.488'
DP-25	40° 2.277'	111° 14.168'
DP-26	40° 2.142'	111° 13.583'
DP-27	40° 1.502'	111° 15.058'
DP-30	39° 59.213'	111° 12.700'
DP-32	39° 58.399'	111° 12.866'
DP-34	39° 57.425'	111° 12.814'
DP-40	39° 59.530'	111° 18.468'
DP-43	39° 57.903'	111° 17.727'
DP-45	39° 57.657'	111° 14.982'
Command 7	40° 1.685'	111° 22.202'
Command 8	40° 1.884'	111° 11.924'
DP-20 RAWS	40° 1.346'	111° 14.842'
Repeater RAWS	40° 1.882'	111° 11.877'
Whiskey RAWS	39° 57.498'	111° 12.763'
Div T Lookout	40° 1.579'	111° 11.443'
Div T Lookout 2 and Camera	39° 59.812'	111° 10.233'
ICP	39° 59.060'	111° 19.981'

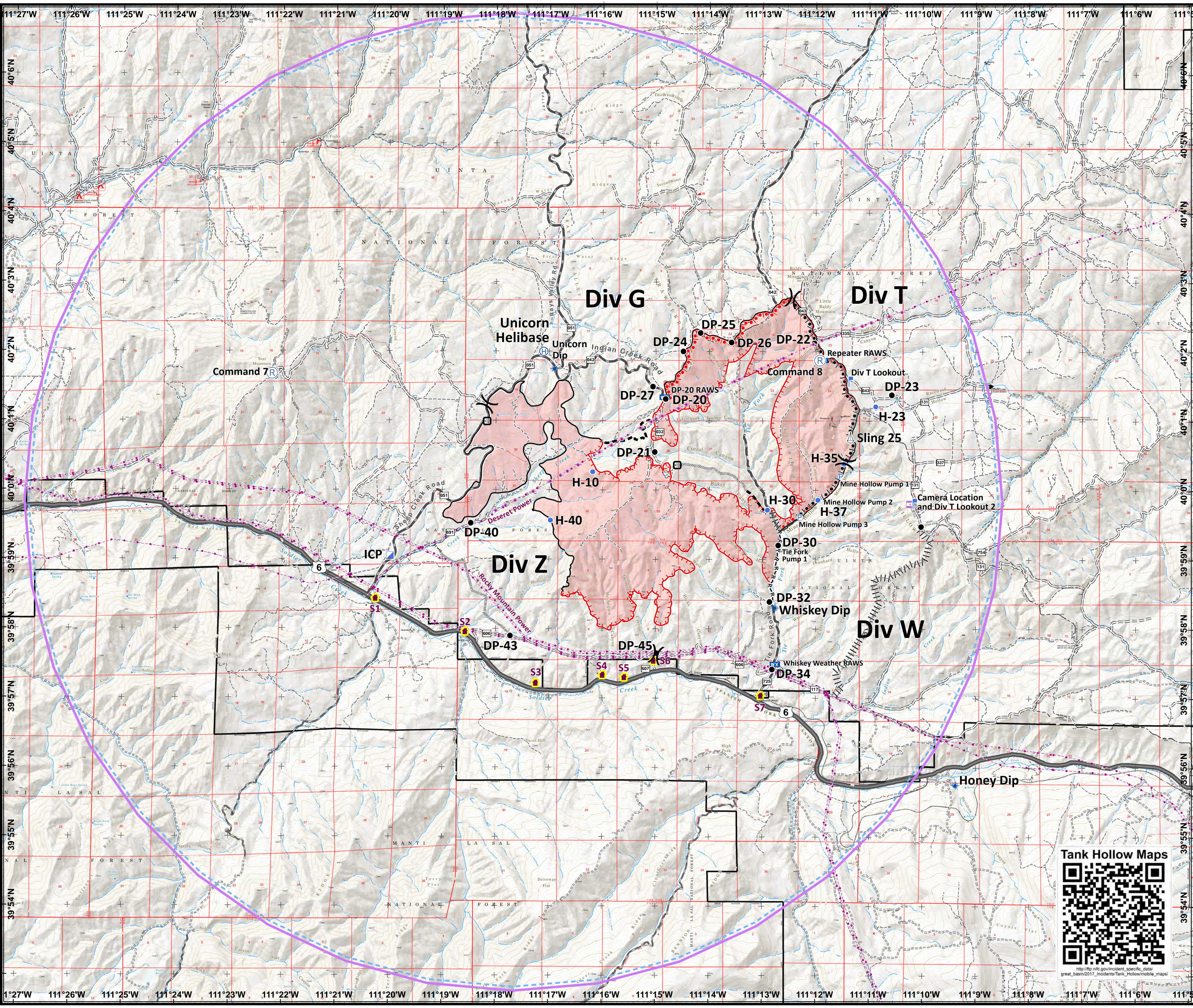
Tank Hollow Maps



http://ftp.nhc.gov/incident_specific_data/great_basin/2017_incidents/Tank_Hollow/mobile_maps/

0 0.5 1 Miles

Projection: NAD83 UTM Zone 11
 Lat-Long Grid Ticks: 'X' minute interval



111°27'W 111°26'W 111°25'W 111°24'W 111°23'W 111°22'W 111°21'W 111°20'W 111°19'W 111°18'W 111°17'W 111°16'W 111°15'W 111°14'W 111°13'W 111°12'W 111°11'W 111°10'W 111°9'W 111°8'W 111°7'W 111°6'W 111°5'W