

Tank Hollow Fire UT-UWF-000791 Progression Map

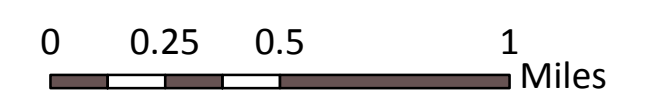
September 10, 2017
appx. 11,090 acres

⊗ Fire Origin
August 11, 2138hr

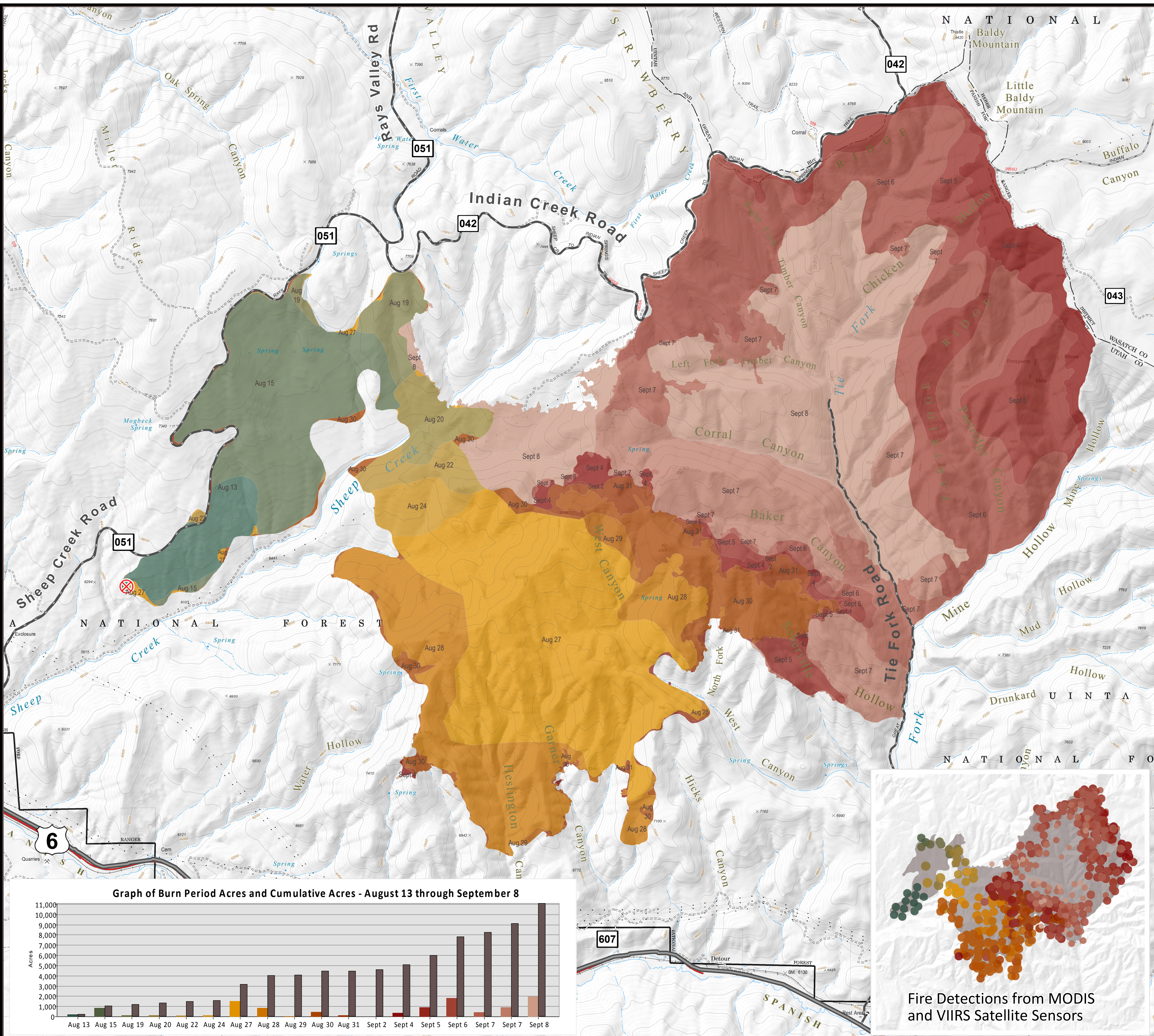
Fire Progression Date, Time and Acres for Burn Period

- August 13, 2000hr - 220 acres
- August 15, 2000hr - 842 acres
- August 19, 2000hr - 138 acres
- August 20, 2000hr - 152 acres
- August 22, 1600hr - 120 acres
- August 24, 2000hr - 127 acres
- August 27, 0600hr - 1549 acres
- August 28, 2000hr - 874 acres
- August 29, 0445hr - 60 acres
- August 30, 2300hr - 476 acres
- August 31, 1030hr - 149 acres
- September 2, 2000hr - 7 acres
- September 4, 2200hr - 381 acres
- September 5, 1000hr - 893 acres
- September 6, 0200hr - 1837 acres
- September 7, 0100hr - 410 acres
- September 7, 1700hr - 905 acres
- September 8, 1700hr - 1950 acres

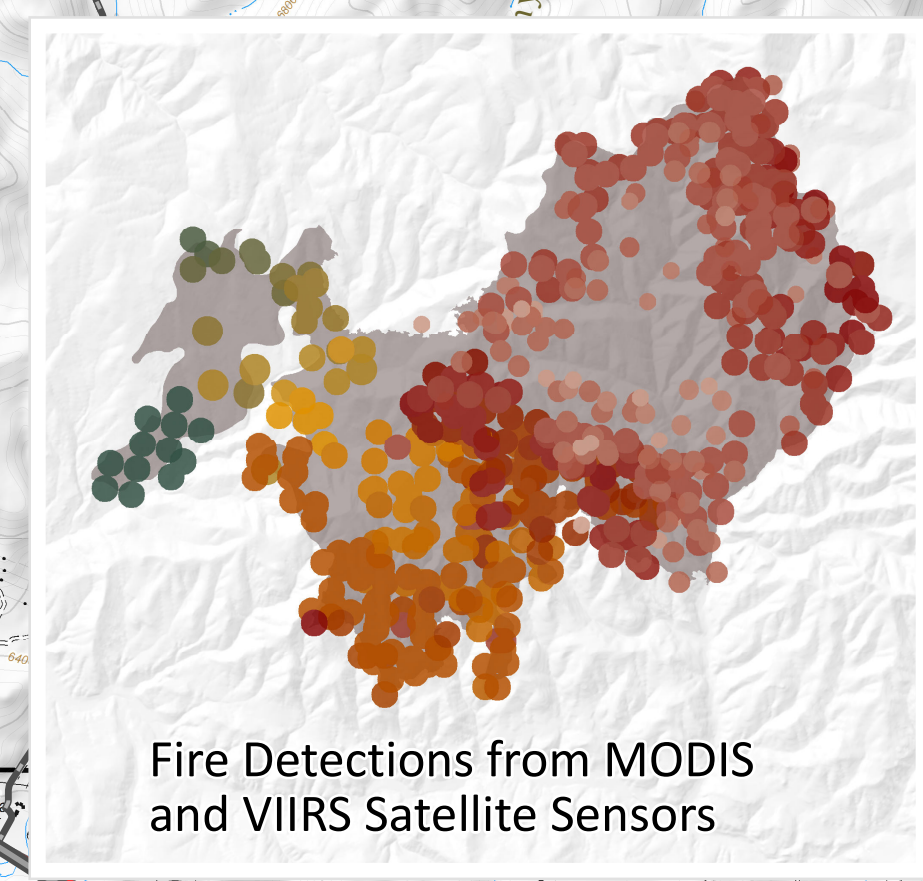
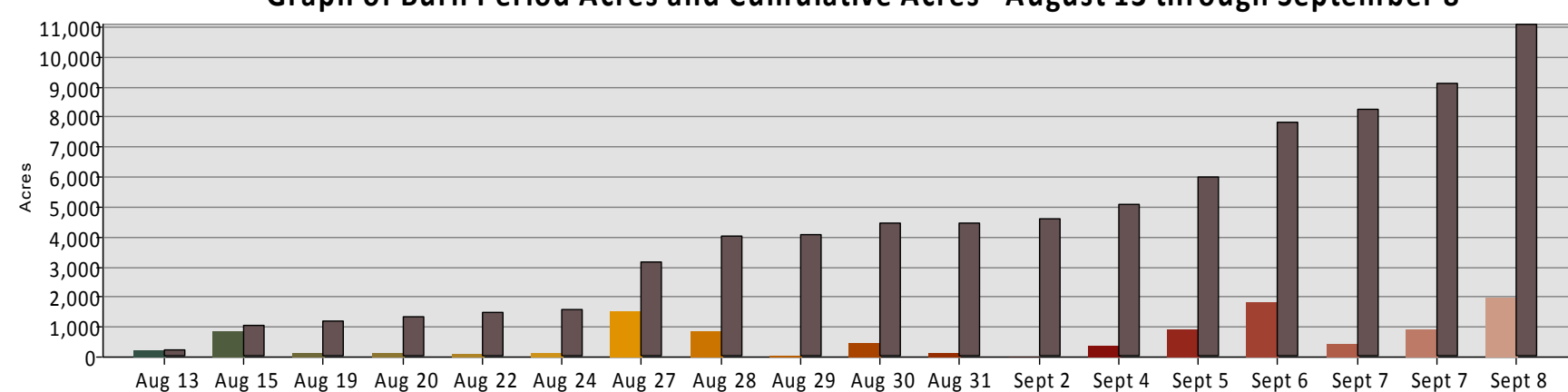
- Highway
- Primary Road



Projection: NAD83 UTM Zone 11
Lat-Long Grid Ticks: X' minute interval
Great Basin Team 6 GIS
Date: 20170910 2019 hr
File: progression_18x24_land_2017_Tank_Hollow_UTUWF000791_mxd



Graph of Burn Period Acres and Cumulative Acres - August 13 through September 8



Fire Detections from MODIS
and VIIRS Satellite Sensors