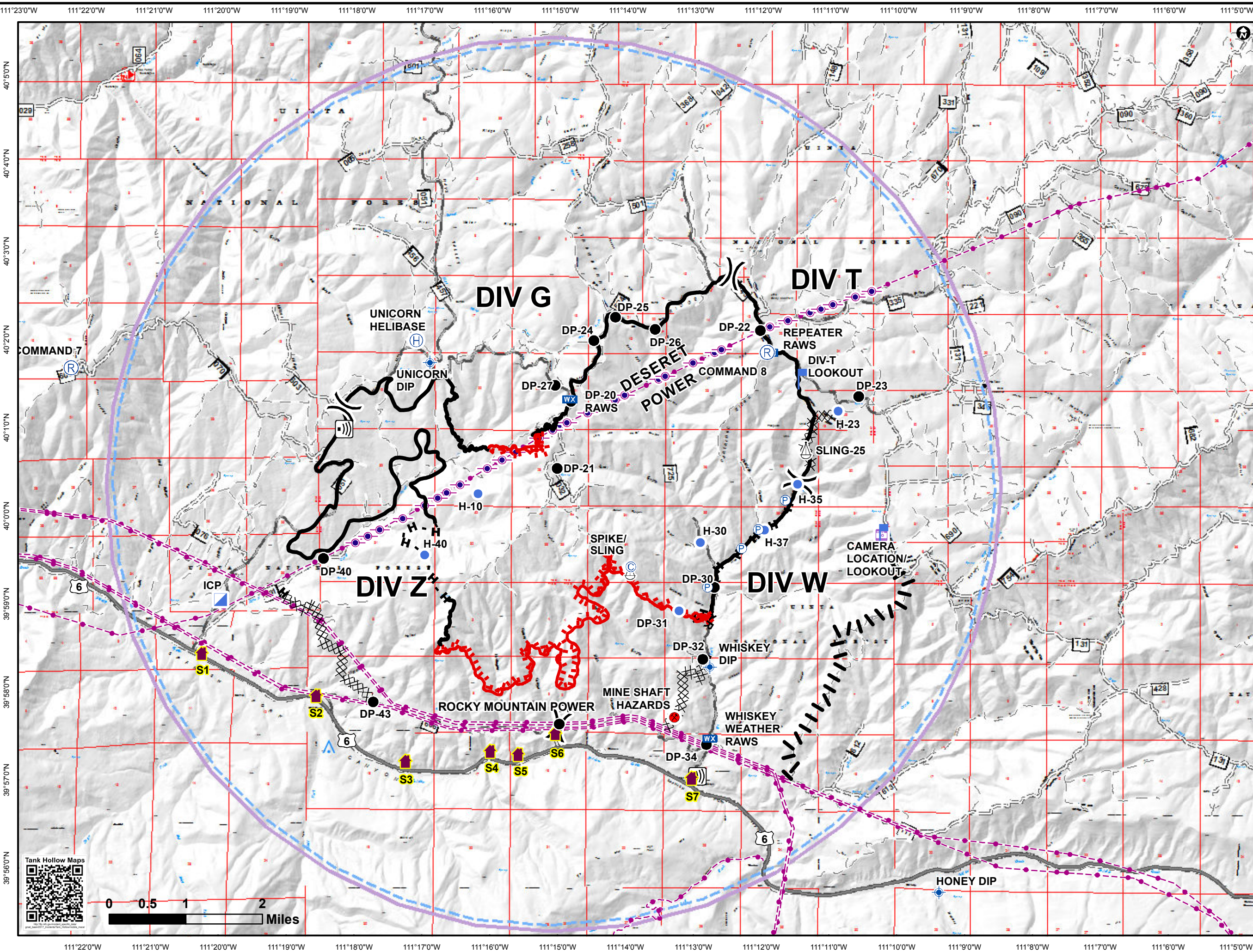


Tank Hollow
 UT-UWF-000791
Airops Pilot Map
 September 11, 2017
 ~11,067 Acres



- ⊙ CAMP
- ⊙ DIP SITE
- ⊗ DIVISION BREAK
- ⊙ HELIBASE
- HELISPOT
- DROP POINT
- ⊙ COMMAND POST
- ⊙ INTERNET ACCESS
- ⊙ LOOKOUT
- ⊙ VALUE AT RISK
- ⊙ MOBILE WEATHER UNIT
- ⊙ MINE SHAFT HAZARDS
- ⊙ PUMP
- ⊙ REPEATER
- ⊙ SLING SITE
- ⊙ CAMERA LOCATION
- ACTIVE BURNOUT
- COMPLETED BURNOUT
- COMPLETED BURNOUT
- ⊗ COMPLETED DOZER LINE
- COMPLETED HAND LINE
- COMPLETED LINE
- PLANNED FIRE LINE
- PROPOSED BURNOUT
- ROAD AS COMPLETED LINE
- UNCONTROLLED FIRE EDGE
- TEMPORARY FLIGHT RESTRICTION
- POWER TRANSMISSION LINE
- POWERLINE TOWER
- ▲ SINGLE OBSTRUCTIONS (< 1000 FT AGL)

FEATURE	NORTH Lat WGS84 DDM	WEST Long WGS84 DDM
Sling Site 25	40° 0.771' N	111° 11.353' W
Whiskey Spike/Sling	39° 59.397' N	111° 13.942' W
Command 7	40° 1.685' N	111° 22.202' W
Command 8	40° 1.884' N	111° 11.924' W
DP-20 RAWS	40° 1.346' N	111° 14.842' W
Repeater RAWS	40° 1.882' N	111° 11.877' W
Whiskey Weather RAWS	39° 57.498' N	111° 12.763' W
DIV-T Lookout	40° 1.579' N	111° 11.443' W
DIV-T Lookout 2	39° 59.818' N	111° 10.239' W
ICP	39° 59.060' N	111° 19.981' W
H-10	40° 0.271' N	111° 16.186' W
H-23	40° 1.217' N	111° 10.877' W
H-30	39° 59.722' N	111° 12.908' W
H-31	39° 58.946' N	111° 13.219' W
H-35	40° 0.388' N	111° 11.472' W
H-37	39° 59.867' N	111° 11.960' W
H-40	39° 59.573' N	111° 16.975' W
Unicorn Helibase	40° 2.007' N	111° 17.107' W
DP-20	40° 1.323' N	111° 14.818' W
DP-21	40° 0.559' N	111° 15.020' W
DP-22	40° 2.129' N	111° 12.027' W
DP-23	40° 1.382' N	111° 10.576' W
DP-24	40° 2.010' N	111° 14.488' W
DP-25	40° 2.277' N	111° 14.168' W
DP-26	40° 2.142' N	111° 13.583' W
DP-27	40° 1.502' N	111° 15.058' W
DP-30	39° 59.213' N	111° 12.700' W
DP-32	39° 58.399' N	111° 12.866' W
DP-34	39° 57.425' N	111° 12.814' W
DP-40	39° 59.530' N	111° 18.468' W
DP-43	39° 57.903' N	111° 17.727' W
DP-45	39° 57.657' N	111° 14.982' W
Honey Dip	39° 55.756' N	111° 9.376' W
Unicorn Dip	40° 1.758' N	111° 16.904' W
Whiskey Dip	39° 58.311' N	111° 12.763' W



Projection NAD 83 UTM Zone 12
 Lat-Long Grid Tick: 1-minute Interval