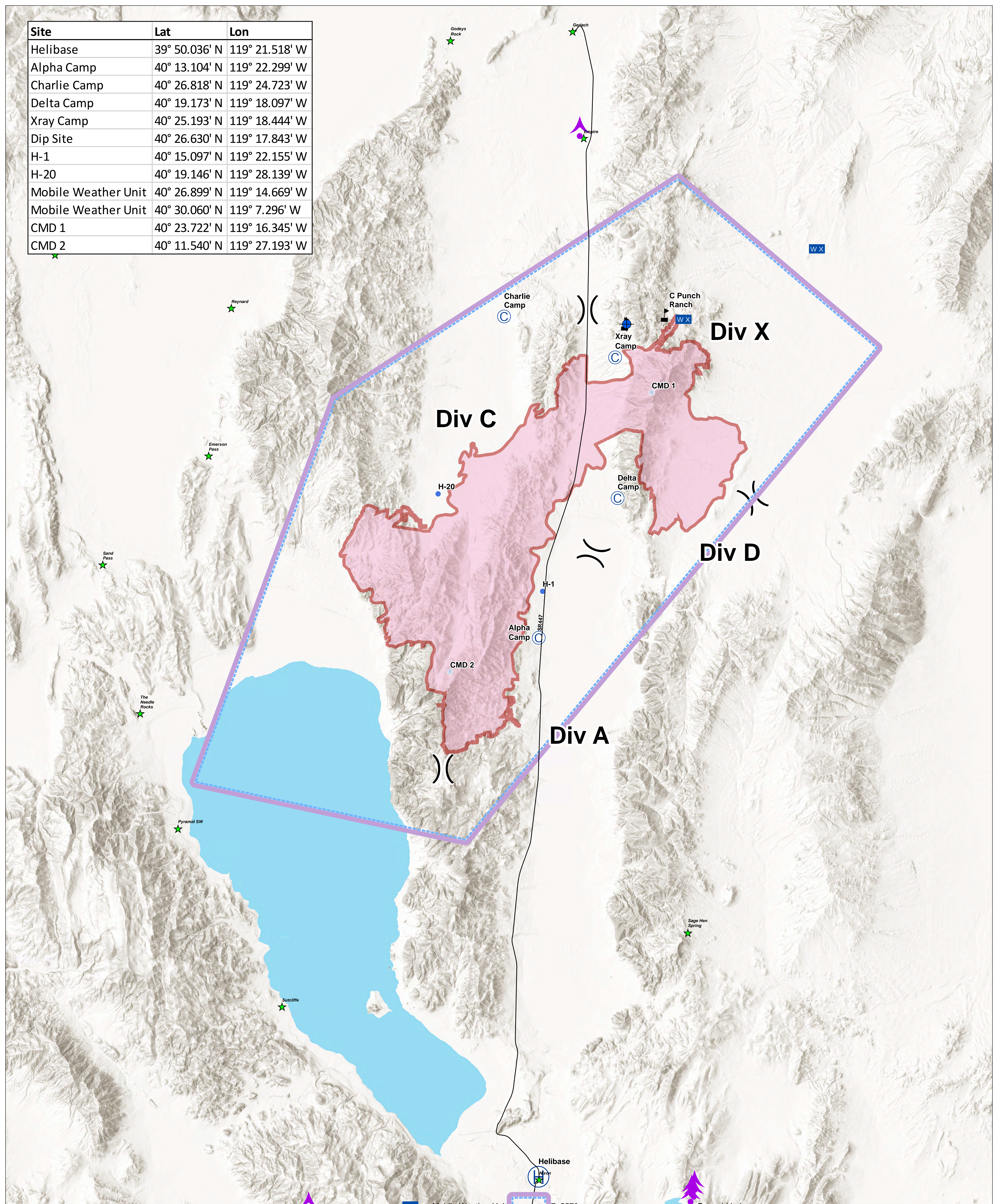


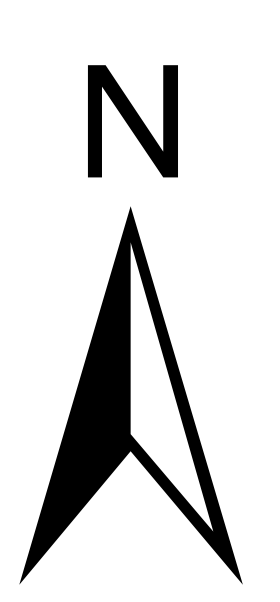
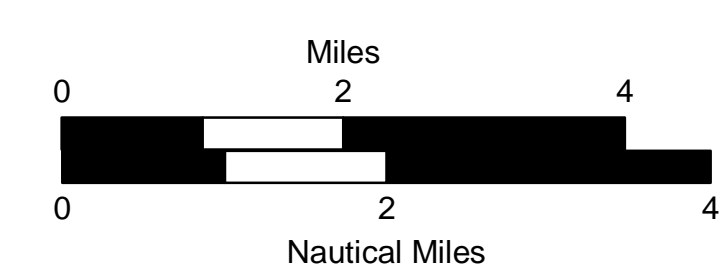
Site	Lat	Lon
Helibase	39° 50.036' N	119° 21.518' W
Alpha Camp	40° 13.104' N	119° 22.299' W
Charlie Camp	40° 26.818' N	119° 24.723' W
Delta Camp	40° 19.173' N	119° 18.097' W
Xray Camp	40° 25.193' N	119° 18.444' W
Dip Site	40° 26.630' N	119° 17.843' W
H-1	40° 15.097' N	119° 22.155' W
H-20	40° 19.146' N	119° 28.139' W
Mobile Weather Unit	40° 26.899' N	119° 14.669' W
Mobile Weather Unit	40° 30.060' N	119° 7.296' W
CMD 1	40° 23.722' N	119° 16.345' W
CMD 2	40° 11.540' N	119° 27.193' W



**Air Operations**  
 Tohakum 2  
 NV-WNA030654  
 09/03/2017  
 88,621 acres  
 as of 09/01/2017, 2112 Hrs



- Aerial Hazard
- Mobile Weather Unit
- Wildfire Daily Fire Perimeter
- City
- Camp
- Repeater
- Value at Risk
- SR 447
- Dip Site
- Helibase
- Division Break
- Helispot



UTM 11N, NAD83  
 8300E, 2002 10  
 WGS 84, 2011, 2017, 2018, 2019, 2020