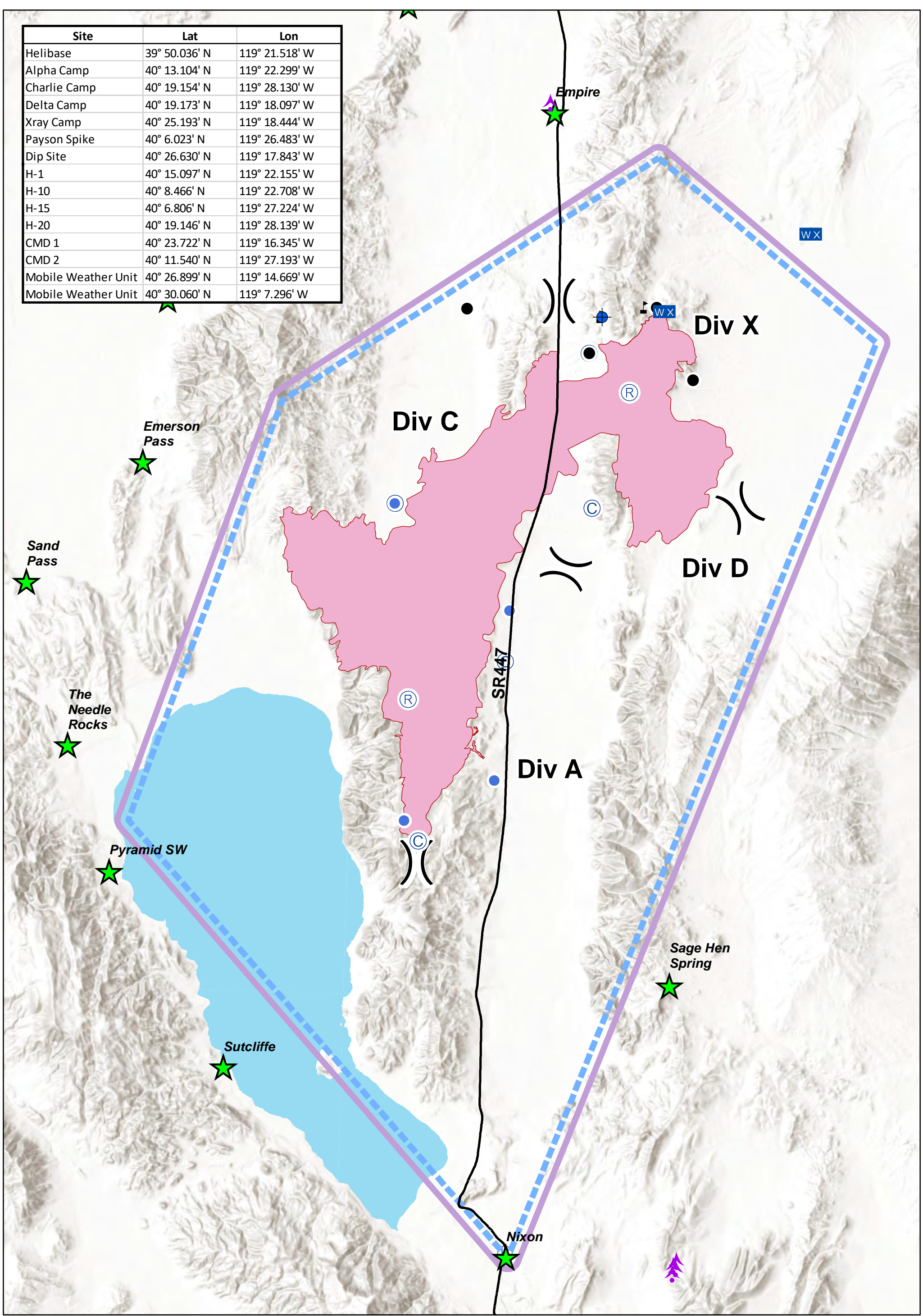


Site	Lat	Lon
Helibase	39° 50.036' N	119° 21.518' W
Alpha Camp	40° 13.104' N	119° 22.299' W
Charlie Camp	40° 19.154' N	119° 28.130' W
Delta Camp	40° 19.173' N	119° 18.097' W
Xray Camp	40° 25.193' N	119° 18.444' W
Payson Spike	40° 6.023' N	119° 26.483' W
Dip Site	40° 26.630' N	119° 17.843' W
H-1	40° 15.097' N	119° 22.155' W
H-10	40° 8.466' N	119° 22.708' W
H-15	40° 6.806' N	119° 27.224' W
H-20	40° 19.146' N	119° 28.139' W
CMD 1	40° 23.722' N	119° 16.345' W
CMD 2	40° 11.540' N	119° 27.193' W
Mobile Weather Unit	40° 26.899' N	119° 14.669' W
Mobile Weather Unit	40° 30.060' N	119° 7.296' W



Air Operations
Tohokum 2
 NV-WNA030654
 09/05/2017
 94,221 acres
 as of 09/04/2017, 1000 Hrs

- Aerial Hazard
- Camp
- Helibase
- Helispot
- Mobile Weather Unit
- Repeater
- Drop Point
- Value at Risk
- Division Break
- Wildfire Daily Fire Perimeter
- SR 447
- Pyramid Lake
- City

Miles 0 2 4
 Nautical Miles 0 2 4

UTM 11N, NAD83
 sdkovach
 9/4/2017, 2048 hrs
 airops_11x17_port_2017_Tahokum2_NV-WNA030654