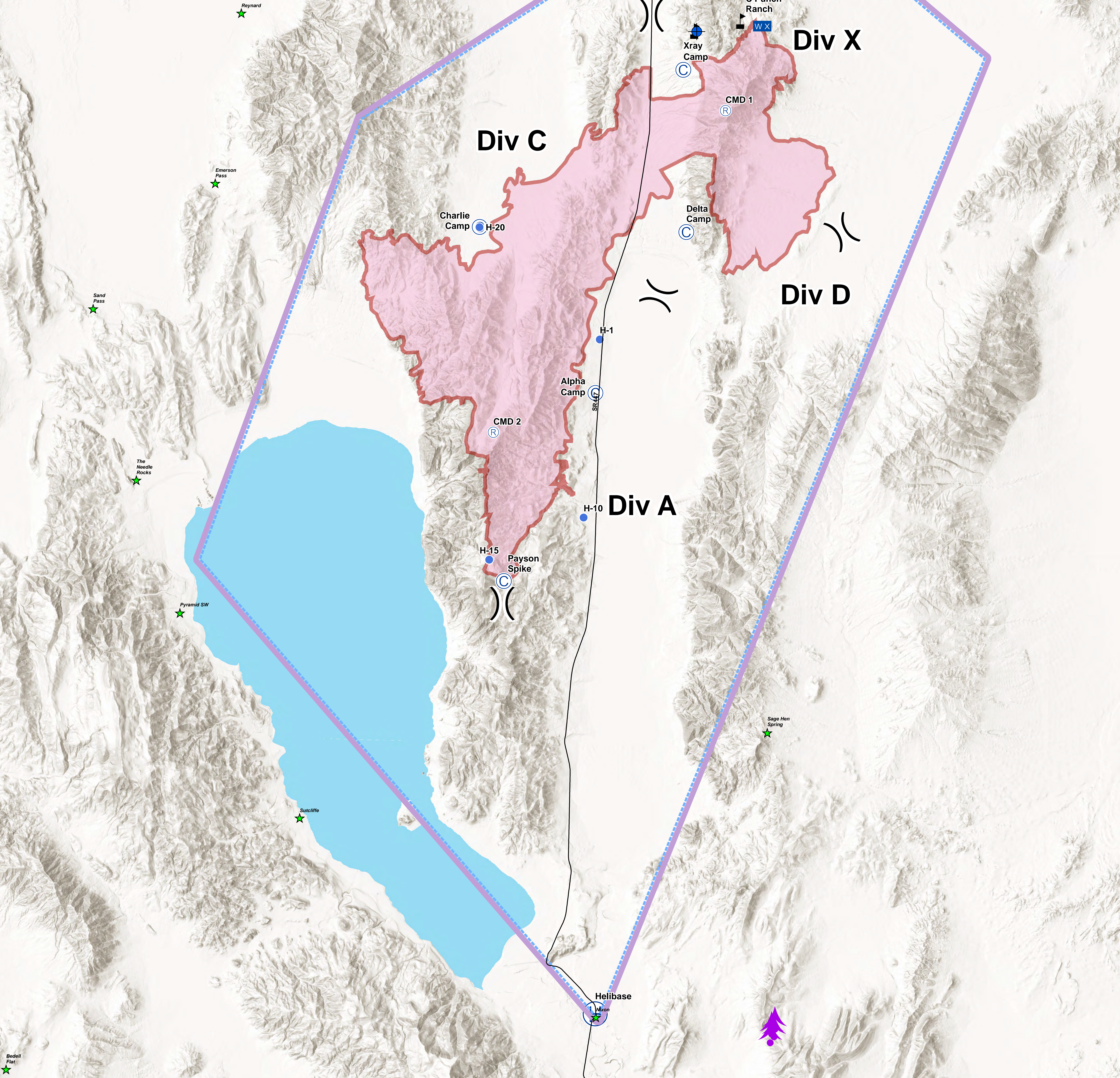


Site	Lat	Lon
Helibase	39° 50.036' N	119° 21.518' W
Alpha Camp	40° 13.104' N	119° 22.299' W
Charlie Camp	40° 19.154' N	119° 28.130' W
Delta Camp	40° 19.173' N	119° 18.097' W
Xray Camp	40° 25.193' N	119° 18.444' W
Payson Spike	40° 6.023' N	119° 26.483' W
Dip Site	40° 26.630' N	119° 17.843' W
H-1	40° 15.097' N	119° 22.155' W
H-10	40° 8.466' N	119° 22.708' W
H-15	40° 6.806' N	119° 27.224' W
H-20	40° 19.146' N	119° 28.139' W
CMD 1	40° 23.722' N	119° 16.345' W
CMD 2	40° 11.540' N	119° 27.193' W
Mobile Weather Unit	40° 26.899' N	119° 14.669' W
Mobile Weather Unit	40° 30.060' N	119° 7.296' W



**Air Operations**  
 Tohakum 2  
 NV-WNA030654  
 09/05/2017  
 94,221 acres  
 as of 09/04/2017, 1000 Hrs

**Legend:**

- Aerial Hazard (A)
- Camp (C)
- Dip Site (D)
- Helibase (H)
- Helispot (•)
- Mobile Weather Unit (WX)
- Repeater (R)
- Value at Risk (V)
- Division Break ())
- 7\_5835 (Dashed Purple Box)
- Wildfire Daily Fire Perimeter (Red Solid Line)
- SR 447 (Black Line)
- Pyramid Lake (Blue Area)
- City (Green Star)

**Scale:**  
 0 2 4 Miles  
 0 2 4 Nautical Miles

**North Arrow:** N