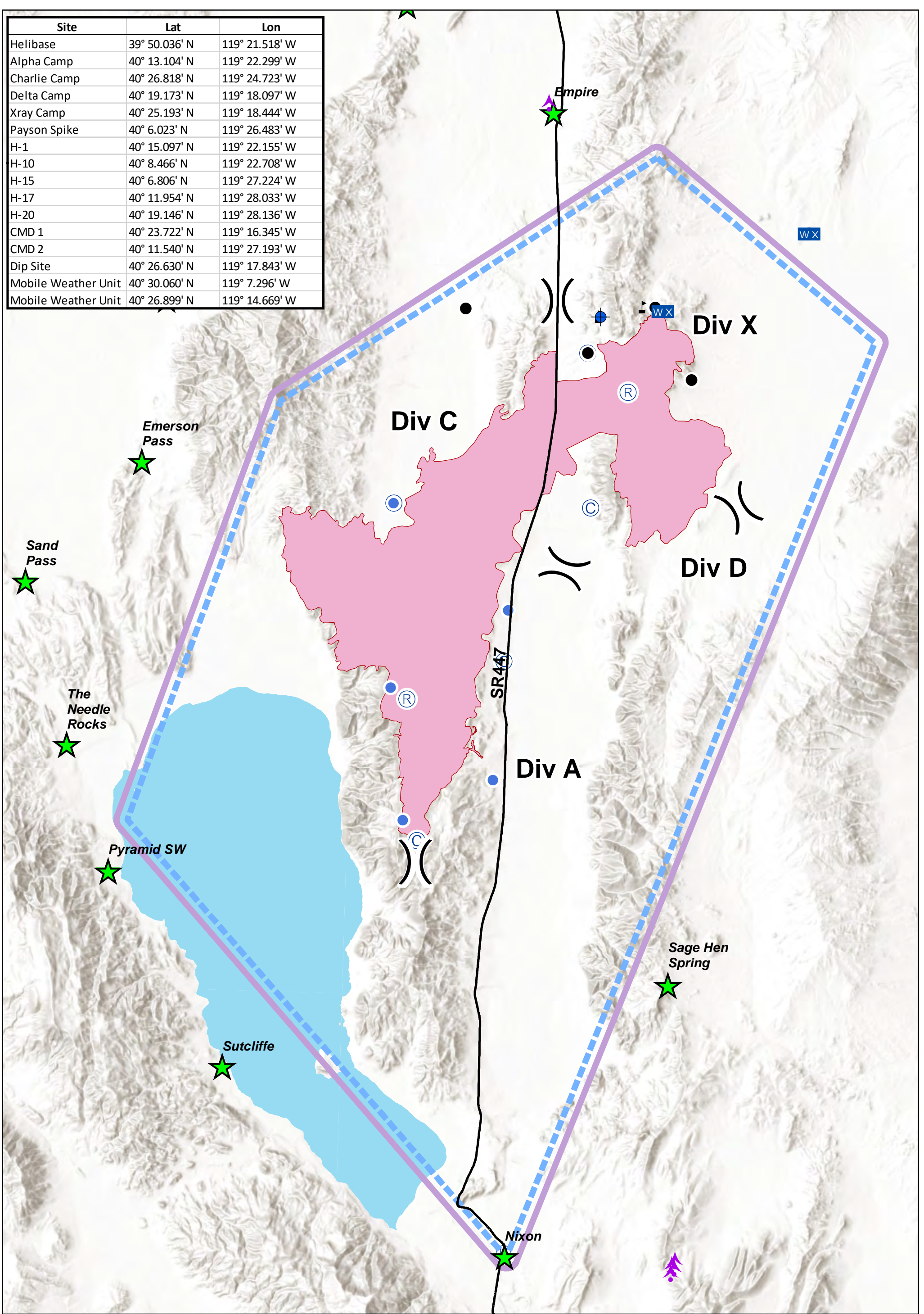


| Site | Lat | Lon |
|---------------------|---------------|----------------|
| Helibase | 39° 50.036' N | 119° 21.518' W |
| Alpha Camp | 40° 13.104' N | 119° 22.299' W |
| Charlie Camp | 40° 26.818' N | 119° 24.723' W |
| Delta Camp | 40° 19.173' N | 119° 18.097' W |
| Xray Camp | 40° 25.193' N | 119° 18.444' W |
| Payson Spike | 40° 6.023' N | 119° 26.483' W |
| H-1 | 40° 15.097' N | 119° 22.155' W |
| H-10 | 40° 8.466' N | 119° 22.708' W |
| H-15 | 40° 6.806' N | 119° 27.224' W |
| H-17 | 40° 11.954' N | 119° 28.033' W |
| H-20 | 40° 19.146' N | 119° 28.136' W |
| CMD 1 | 40° 23.722' N | 119° 16.345' W |
| CMD 2 | 40° 11.540' N | 119° 27.193' W |
| Dip Site | 40° 26.630' N | 119° 17.843' W |
| Mobile Weather Unit | 40° 30.060' N | 119° 7.296' W |
| Mobile Weather Unit | 40° 26.899' N | 119° 14.669' W |



Air Operations
Tohakum 2
 NV-WNA030654
 09/06/2017
 94,221 acres
 as of 09/04/2017, 1000 Hrs

- Aerial Hazard
- Camp
- Dip Site
- Drop Point
- Helibase
- Helispot
- Mobile Weather Unit
- Repeater
- Value at Risk
- Division Break
- TFR7_5835
- Wildfire Daily Fire Perimeter
- SR 447
- Pyramid Lake
- City

Miles 0 2 4
 Nautical Miles 0 2 4

UTM 11N, NAD83
 sdkovach
 9/5/2017, 1821 hrs
 airops_11x17_port_2017_Tahokum2_NV-WNA030654