

Pole Creek & Bald Mtn. Pilot Map

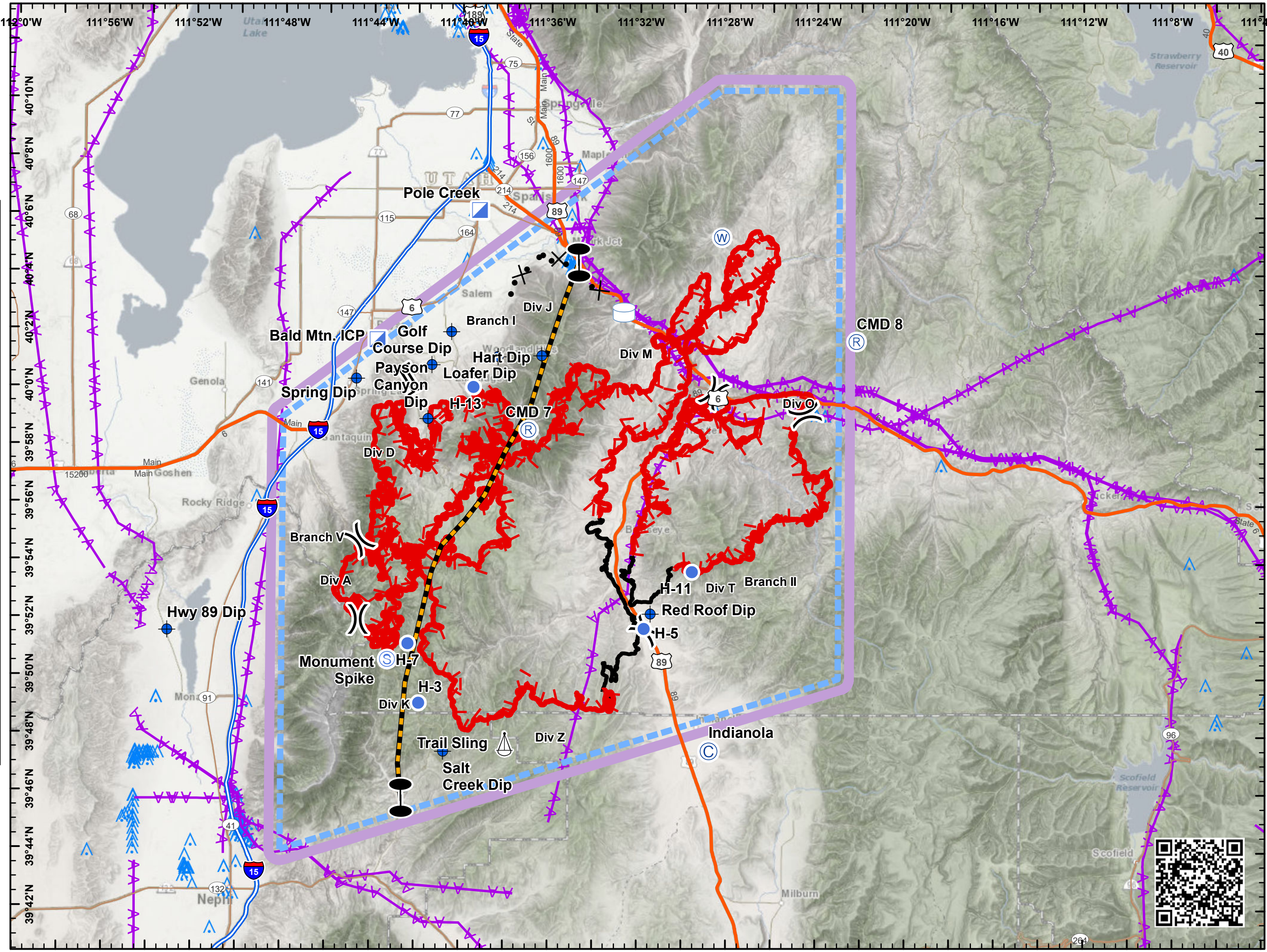
UT-UWF-971/892

September 17, 2018

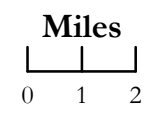
Day Shift

Pole Creek = 71,873 acres,
 Bald Mt. = 14,866 acres as of
 9/17/18 0200 hrs

- Ⓢ Camp
- Ⓢ Dip Site
- Helispot
- Ⓢ Incident Command Post
- Ⓢ Repeater
- Ⓢ Sling Site
- Ⓢ Staging Area
- Ⓢ Water Source
- Ⓢ Water Tank
- Ⓢ Division Break
- Ⓢ Branch Break
- Ⓢ Zone Break
- Ⓢ Electrical Lines
- Ⓢ TFR 9/16/18
- Ⓢ Uncontrolled Fire Edge
- Ⓢ Completed Line
- Ⓢ Proposed Dozer Line
- Ⓢ Zone
- Ⓢ Single Obstructions (>= 1000 Ft AGL)
- Ⓢ Group Obstructions (>= 1000 Ft AGL)
- Ⓢ Single Obstructions (< 1000 Ft AGL)
- Ⓢ Group Obstructions (< 1000 Ft AGL)



NAD 83
 UTM Zone 12
 SE - GB#1
 9/17/2018
 0609



Pole Creek Fire UT-UWF-971			
Coordinate Point Table			
9/16/2018 2200			
Point Type	Label	Lat_WGS84	Long_WGS84
Camp	Indianola	39° 47.480' N	111° 28.780' W
Dip Site	Golf Course Dip	40° 00.829' N	111° 41.320' W
Dip Site	Hart Dip	40° 01.159' N	111° 36.379' W
Dip Site	Hwy 89 Dip	39° 51.589' N	111° 53.149' W
Dip Site	Loafer Dip	40° 01.116' N	111° 38.343' W
Dip Site	Payson Canyon Dip	39° 58.950' N	111° 41.479' W
Dip Site	Payson Lakes	39° 56.044' N	111° 38.377' W
Dip Site	Red Roof Dip	39° 52.230' N	111° 31.429' W
Dip Site	Salt Creek Dip	39° 47.443' N	111° 40.713' W
Dip Site	Spring Dip	40° 00.327' N	111° 44.712' W
Drop Point	DP-15	39° 58.773' N	111° 41.521' W
Drop Point	DP-20	39° 59.832' N	111° 39.714' W
Drop Point	DP-30	40° 02.566' N	111° 32.806' W
Drop Point	DP-35	40° 04.201' N	111° 26.131' W
Drop Point	DP-5	39° 57.632' N	111° 46.570' W
Helispot	H-11	39° 53.683' N	111° 29.574' W
Helispot	H-13	40° 00.052' N	111° 39.445' W
Helispot	H-3	39° 49.105' N	111° 41.823' W
Helispot	H-5	39° 51.709' N	111° 31.720' W
Helispot	H-7	39° 51.156' N	111° 42.328' W
Incident Command Post	Bald Mtn. ICP	40° 01.678' N	111° 43.781' W
Incident Command Post	Pole Creek	40° 06.169' N	111° 39.216' W
Repeater	CMD 7	39° 58.570' N	111° 36.952' W
Repeater	CMD 8	40° 01.685' N	111° 22.206' W
Sling Site	Fork Sling	39° 47.658' N	111° 38.473' W
Sling Site	Trail Sling	39° 47.697' N	111° 37.958' W
Value at Risk	Covered Bridge	40° 02.678' N	111° 32.388' W
Value at Risk	Diamond Fork Guard Station	40° 09.518' N	111° 19.741' W