

Pole Creek & Bald Mtn. Pilot Map

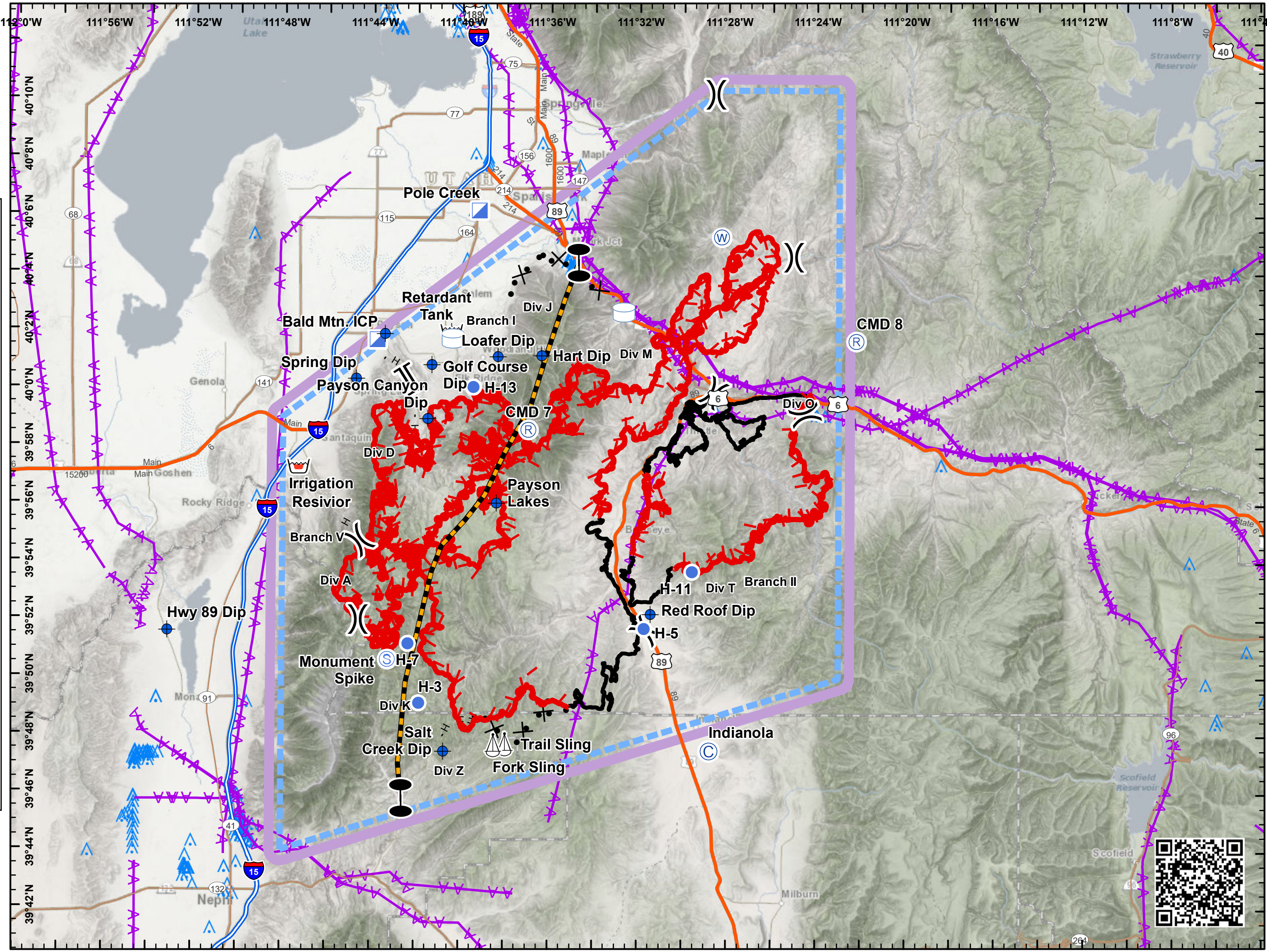
UT-UWF-971/892

September 18, 2018

Day Shift

Pole Creek = 71,873 acres,
 Bald Mt. = 14,866 acres as of
 9/17/18 0200 hrs

- Camp
- Dip Site
- Helispot
- Incident Command Post
- Repeater
- Retardant/Mud Pit
- Sling Site
- Staging Area
- Water Source
- Water Tank
- Division Break
- Branch Break
- Zone Break
- Electrical Lines
- TFR 9/16/18
- Uncontrolled Fire Edge
- Completed Line
- Completed Hand Line
- Proposed Dozer Line
- Zone
- Single Obstructions (>= 1000 Ft AGL)
- Group Obstructions (>= 1000 Ft AGL)
- Single Obstructions (< 1000 Ft AGL)
- Group Obstructions (< 1000 Ft AGL)



NAD 83
UTM Zone 12

SE - GB#1
9/17/2018
1947

Miles

