

# Pole Creek & Bald Mtn. Pilot Map

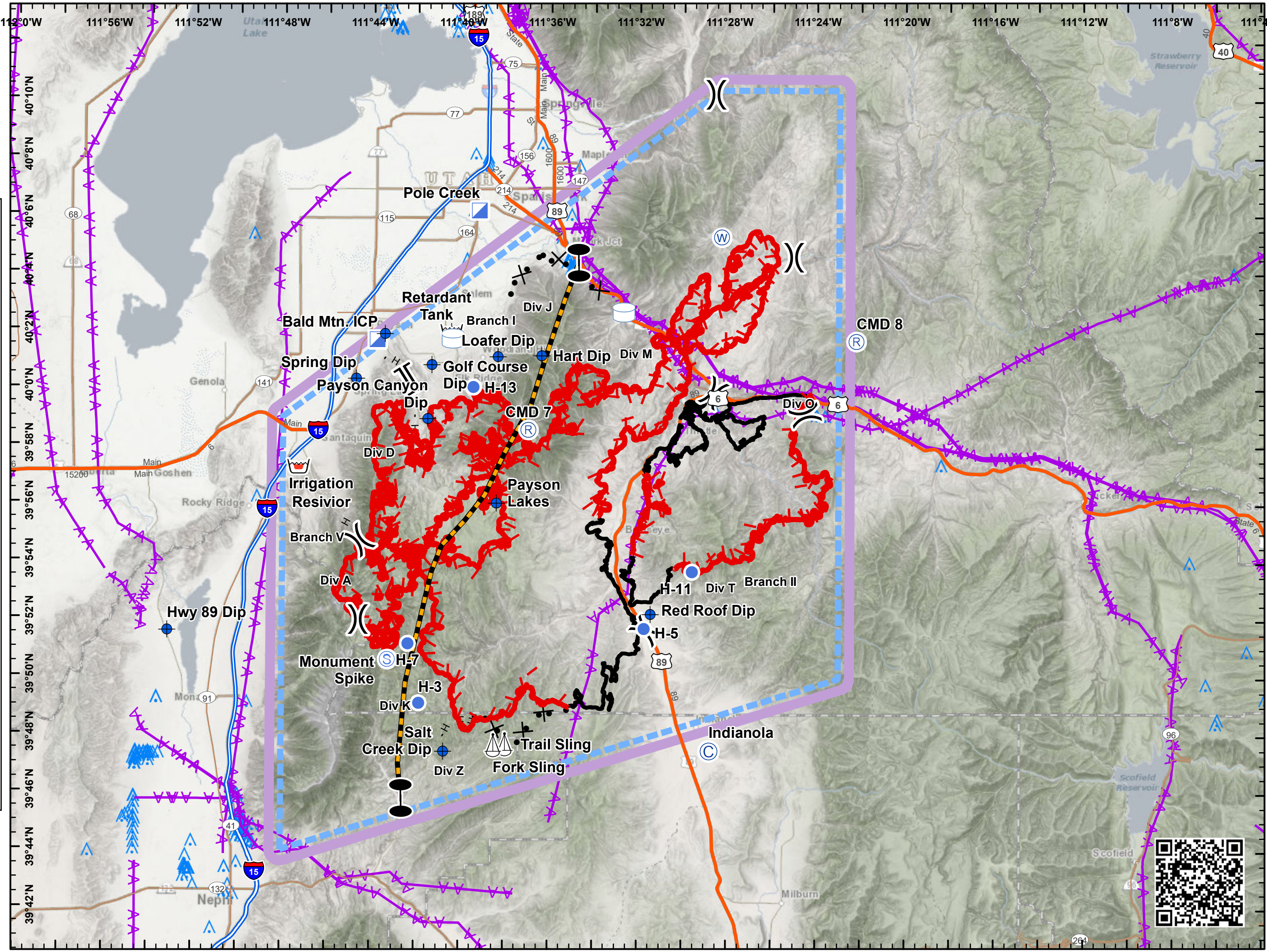
## UT-UWF-971/892

### September 18, 2018

#### Day Shift

Pole Creek = 71,873 acres,  
 Bald Mt. = 14,866 acres as of  
 9/17/18 0200 hrs

- Camp
- Dip Site
- Helispot
- Incident Command Post
- Repeater
- Retardant/Mud Pit
- Sling Site
- Staging Area
- Water Source
- Water Tank
- Division Break
- Branch Break
- Zone Break
- Electrical Lines
- TFR 9/16/18
- Uncontrolled Fire Edge
- Completed Line
- Completed Hand Line
- Proposed Dozer Line
- Zone
- Single Obstructions (>= 1000 Ft AGL)
- Group Obstructions (>= 1000 Ft AGL)
- Single Obstructions (< 1000 Ft AGL)
- Group Obstructions (< 1000 Ft AGL)



NAD 83  
 UTM Zone 12

SE - GB#1  
 9/17/2018  
 1947

Miles

<b>Pole Creek and Bald Mountain Fires UT-UWF-971/892</b>				
Coordinate Point Table				
9/17/2018 1330				
<b>Incident</b>	<b>Point Type</b>	<b>Label</b>	<b>Lat_WGS84_DDM</b>	<b>Long_WGS84_DDM</b>
Bald Mountain	Dip Site	Golf Course Dip	40° 00.830' N	111° 41.320' W
Bald Mountain	Dip Site	Payson Canyon Dip	39° 58.950' N	111° 41.480' W
Bald Mountain	Dip Site	Hwy 89 Dip	39° 51.590' N	111° 53.150' W
Bald Mountain	Drop Point	DP-5	39° 57.633' N	111° 46.570' W
Bald Mountain	Drop Point	DP-20	39° 59.832' N	111° 39.714' W
Bald Mountain	Drop Point	DP-15	39° 58.773' N	111° 41.521' W
Bald Mountain	Helispot	H-7	39° 51.156' N	111° 42.329' W
Bald Mountain	Incident Command Post	Bald Mtn. ICP	40° 01.679' N	111° 43.782' W
Pole Creek	Camp	Indianola	39° 47.480' N	111° 28.781' W
Pole Creek	Dip Site	Salt Creek Dip	39° 47.443' N	111° 40.713' W
Pole Creek	Dip Site	Red Roof Dip	39° 52.230' N	111° 31.430' W
Pole Creek	Dip Site	Payson Lakes	39° 56.045' N	111° 38.378' W
Pole Creek	Dip Site	Spring Dip	40° 00.327' N	111° 44.712' W
Pole Creek	Dip Site	Hart Dip	40° 01.160' N	111° 36.380' W
Pole Creek	Dip Site	Loafer Dip	40° 01.116' N	111° 38.343' W
Pole Creek	Drop Point	DP-30	40° 02.567' N	111° 32.807' W
Pole Creek	Drop Point	DP-35	40° 04.202' N	111° 26.132' W
Pole Creek	Helispot	H-5	39° 51.710' N	111° 31.720' W
Pole Creek	Helispot	H-3	39° 49.105' N	111° 41.823' W
Pole Creek	Helispot	H-11	39° 53.683' N	111° 29.574' W
Pole Creek	Helispot	H-13	40° 00.053' N	111° 39.445' W
Pole Creek	Incident Command Post	Pole Creek	40° 06.170' N	111° 39.217' W
Pole Creek	Repeater	CMD 7	39° 58.570' N	111° 36.953' W
Pole Creek	Repeater	CMD 8	40° 01.685' N	111° 22.206' W
Pole Creek	Sling Site	Trail Sling	39° 47.697' N	111° 37.959' W
Pole Creek	Sling Site	Fork Sling	39° 47.658' N	111° 38.473' W
Pole Creek	Value at Risk	Diamond Fork Guard Station	40° 09.518' N	111° 19.741' W
Pole Creek	Value at Risk	Covered Bridge	40° 02.679' N	111° 32.389' W