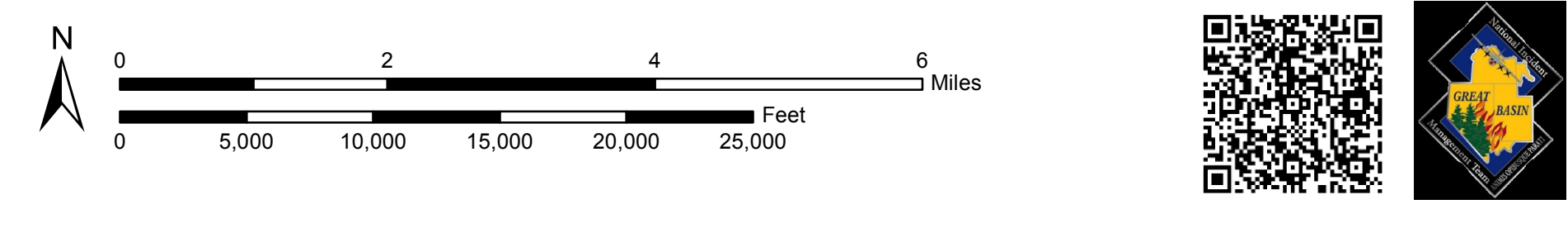
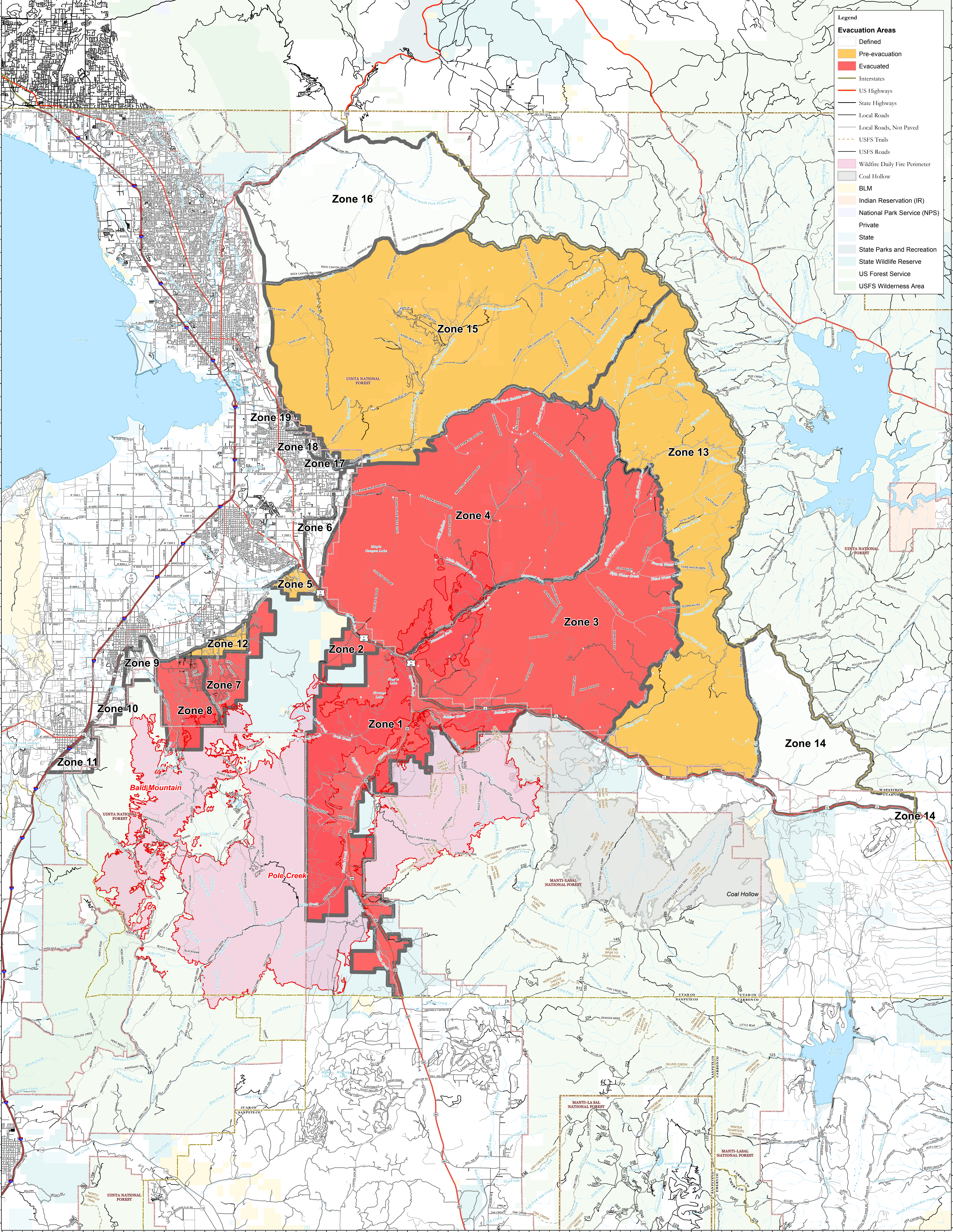


- Legend**
- Evacuation Areas**
- Defined
  - Pre-evacuation
  - Evacuated
  - Interstates
  - US Highways
  - State Highways
  - Local Roads
  - Local Roads, Not Paved
  - USFS Trails
  - USFS Roads
  - Wildfire Daily Fire Perimeter
  - Coal Hollow
  - BLM
  - Indian Reservation (IR)
  - National Park Service (NPS)
  - Private
  - State
  - State Parks and Recreation
  - State Wildlife Reserve
  - US Forest Service
  - USFS Wilderness Area



**Pole Creek and Bald Mountain - UT-UWF-971/892 - Evacuation Map**  
 Sept. 18, 2018  
 Pole Creek = 74,509 acres, Bald Mt. = 15,635 acres as of 9/17/18 2330 hrs