

BALD MTN & POLE CREEK UT-UWF-892/971

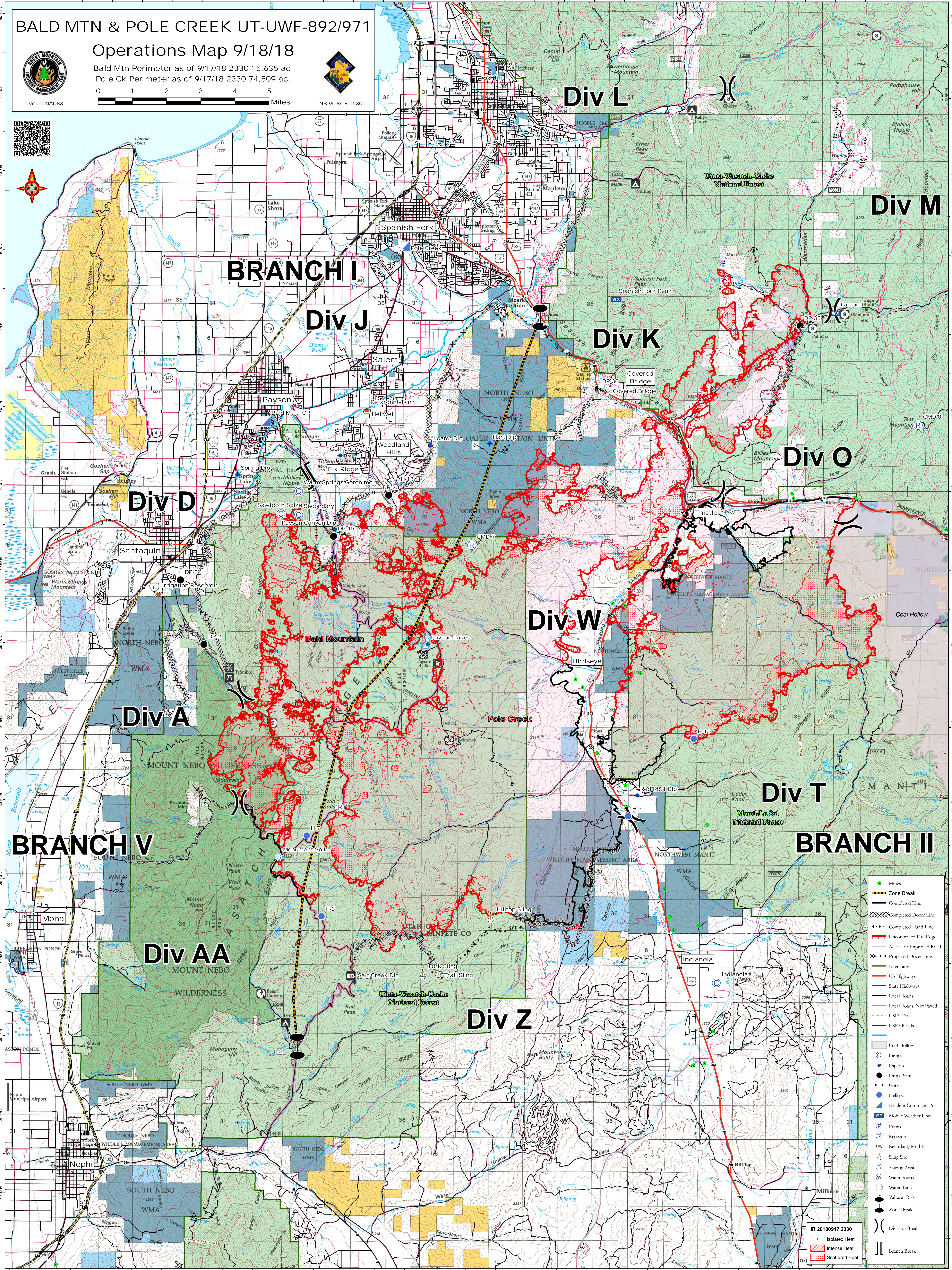
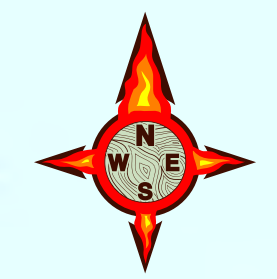
Operations Map 9/18/18

Bald Mtn Perimeter as of 9/17/18 2330 15,635 ac.
Pole Ck Perimeter as of 9/17/18 2330 74,509 ac.



0 1 2 3 4 5 Miles

NB 9/18/18 1530



- Mines
- Zone Break
- Completed Line
- Completed Dozer Line
- Completed Hand Line
- Uncontrolled Fire Edge
- Access or Improved Road
- Proposed Dozer Line
- Interstates
- US Highways
- State Highways
- Local Roads
- Local Roads, Not Paved
- USFS Trails
- USFS Roads
- Coal Hollow
- Camp
- Dip Site
- Drop Point
- Gate
- Helipoint
- Incident Command Post
- Mobile Weather Unit
- Pump
- Repeater
- Retardant/Mud Pit
- Sling Site
- Staging Area
- Water Source
- Water Tank
- Value at Risk
- Zone Break
- Division Break
- Branch Break

IR 20180917 2330
Isolated Heat
Intense Heat
Scattered Heat