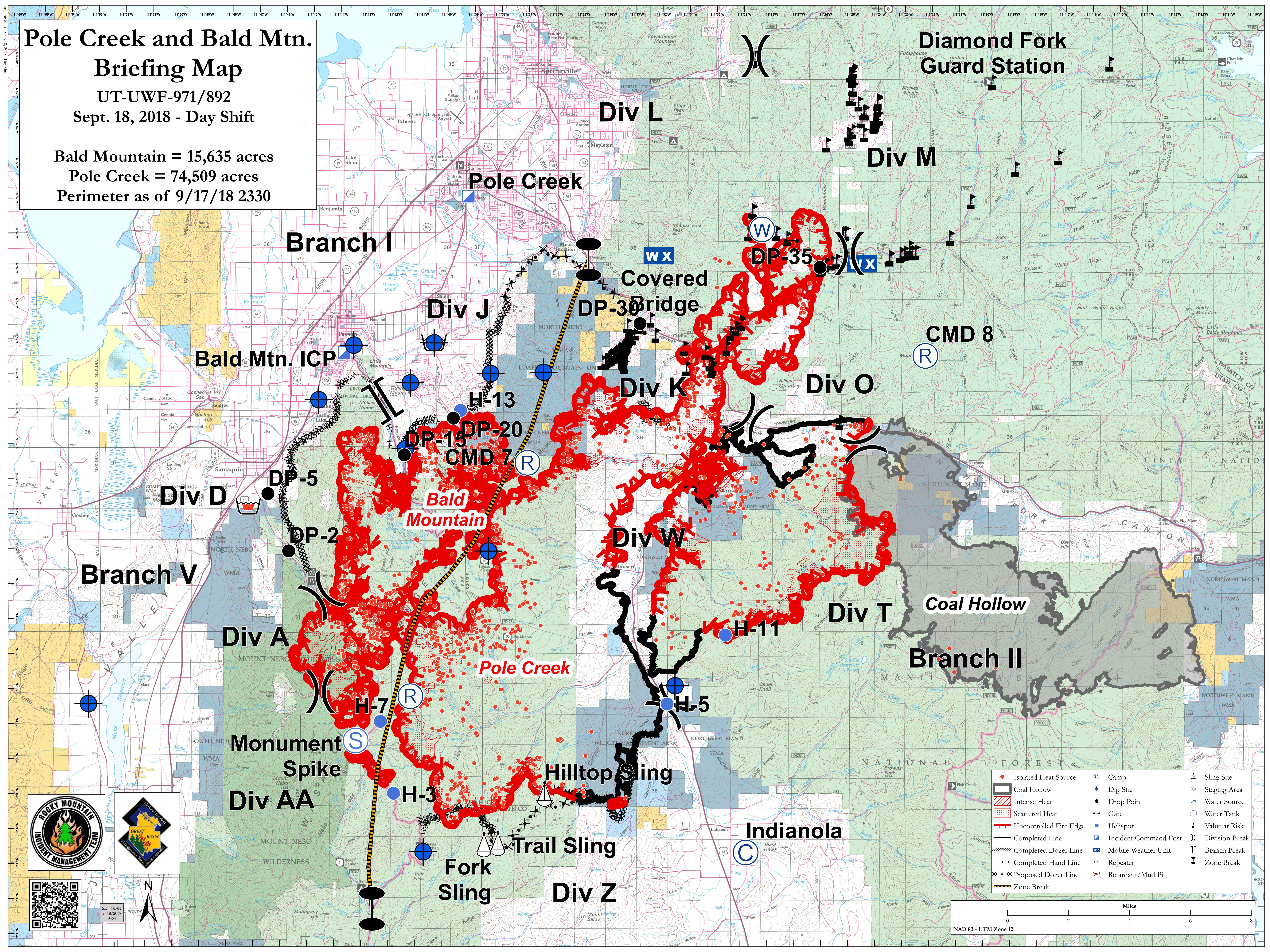


# Pole Creek and Bald Mtn. Briefing Map

UT-UWF-971/892

Sept. 18, 2018 - Day Shift

Bald Mountain = 15,635 acres  
Pole Creek = 74,509 acres  
Perimeter as of 9/17/18 2330



Branch I

Bald Mtn. ICP

Div D

Branch V

Div A

Monument Spike  
Div AA

Div J

Pole Creek

Div L

Covered Bridge  
DP-30

Div K

Div W

Hilltop Sling

Div Z

Div M

Div O

Div T

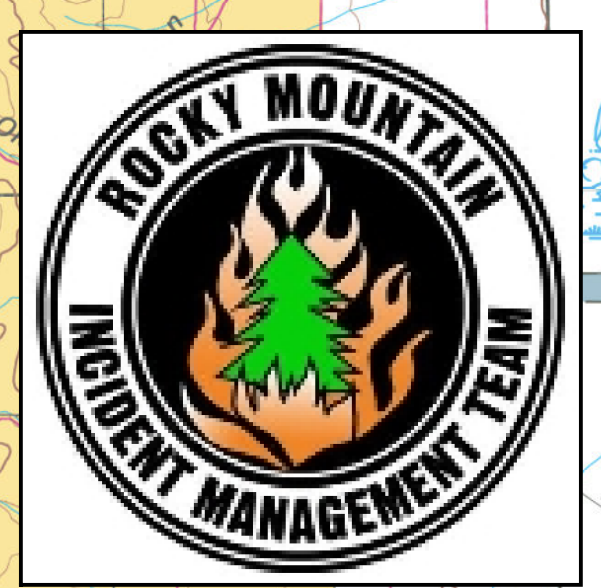
Indianola

CMD 8

Branch II

Coal Hollow

Diamond Fork Guard Station



SI - GB1  
9/18/2018  
0454



- Isolated Heat Source
- Coal Hollow
- Intense Heat
- Scattered Heat
- Uncontrolled Fire Edge
- Completed Line
- Completed Dozer Line
- Completed Hand Line
- Proposed Dozer Line
- Zone Break
- Camp
- Dip Site
- Drop Point
- Gate
- Helispot
- Incident Command Post
- Mobile Weather Unit
- Repeater
- Retardant/Mud Pit
- Sling Site
- Staging Area
- Water Source
- Water Tank
- Value at Risk
- Division Break
- Branch Break
- Zone Break

