

Pole Creek and Bald Mt.

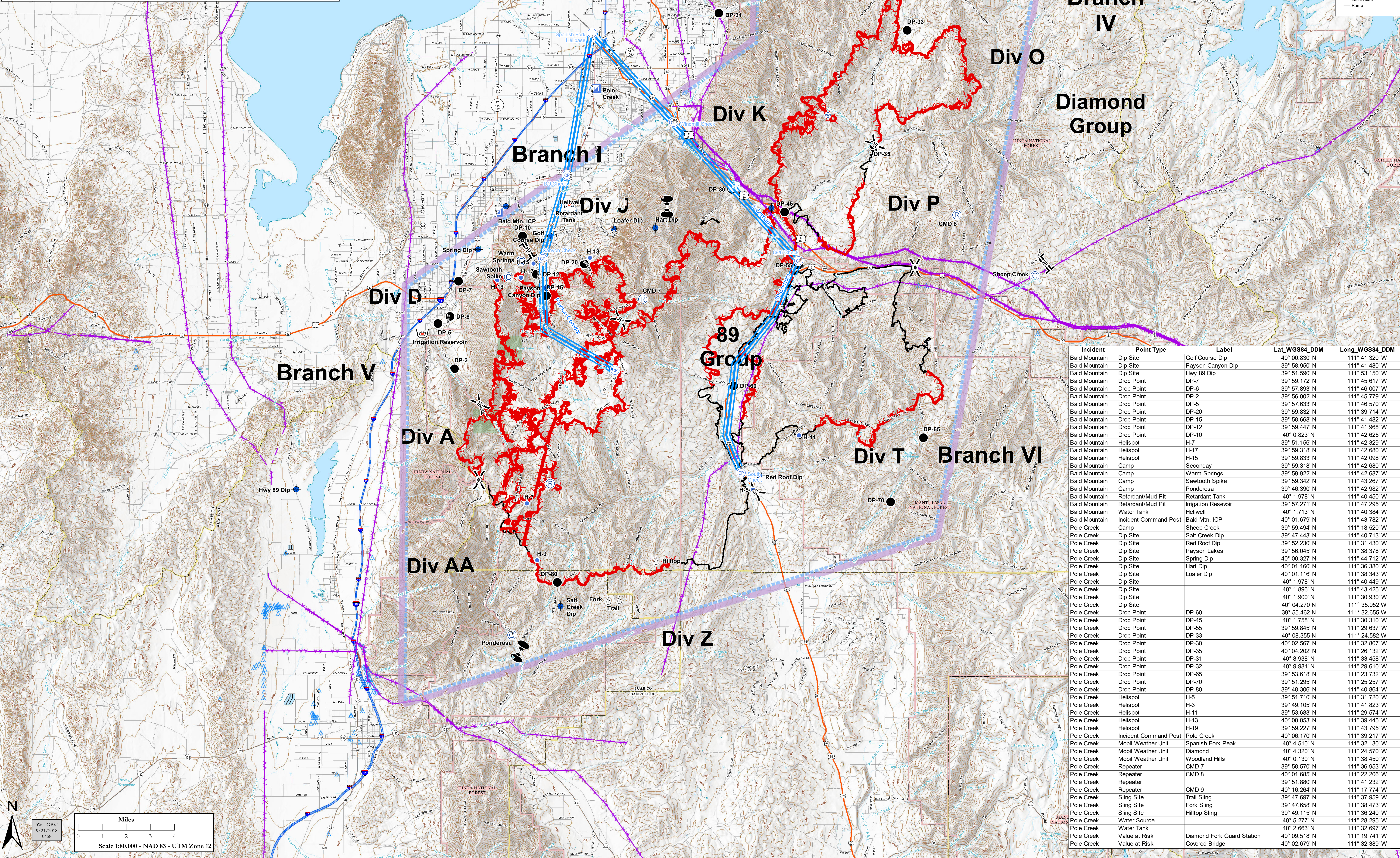
Air Ops Map UT-UWF-971/892

Sept. 21, 2018 - Day Shift

Pole Creek = 98,462 acres,
Bald Mt. = 17,999 acres as
of 9/20/18 @ 2329 hrs



- CP Check Point
- H Helibase
- TFRR19
- Contour
- Dip Site
- Helispot
- Incident Command Post
- Retardant/Mud Pit
- Sling Site
- Water Source
- Water Tank
- Division Break
- Branch Break
- Zone Break
- Uncontrolled Fire Edge
- Completed Line
- Electrical Lines
- Limited Access
- Highway
- Major Road
- Local Road
- Ramp



Incident	Point Type	Label	Lat_WGS84_DDM	Long_WGS84_DDM
Bald Mountain	Dip Site	Golf Course Dip	40° 00.830' N	111° 41.320' W
Bald Mountain	Dip Site	Payson Canyon Dip	39° 58.950' N	111° 41.480' W
Bald Mountain	Dip Site	Hwy 89 Dip	39° 51.900' N	111° 53.150' W
Bald Mountain	Drop Point	DP-7	39° 59.172' N	111° 45.617' W
Bald Mountain	Drop Point	DP-6	39° 57.893' N	111° 46.007' W
Bald Mountain	Drop Point	DP-2	39° 56.002' N	111° 45.779' W
Bald Mountain	Drop Point	DP-5	39° 57.633' N	111° 46.570' W
Bald Mountain	Drop Point	DP-20	39° 59.832' N	111° 39.714' W
Bald Mountain	Drop Point	DP-15	39° 58.668' N	111° 41.482' W
Bald Mountain	Drop Point	DP-12	39° 59.447' N	111° 41.968' W
Bald Mountain	Drop Point	DP-10	40° 0.823' N	111° 42.625' W
Bald Mountain	Helispot	H-7	39° 51.156' N	111° 42.329' W
Bald Mountain	Helispot	H-17	39° 59.318' N	111° 42.680' W
Bald Mountain	Helispot	H-15	39° 59.833' N	111° 42.098' W
Bald Mountain	Camp	Secondary	39° 59.318' N	111° 42.680' W
Bald Mountain	Camp	Warm Springs	39° 59.922' N	111° 42.687' W
Bald Mountain	Camp	Sawtooth Spike	39° 59.342' N	111° 43.267' W
Bald Mountain	Camp	Ponderosa	39° 46.390' N	111° 42.982' W
Bald Mountain	Retardant/Mud Pit	Retardant Tank	40° 1.978' N	111° 40.450' W
Bald Mountain	Retardant/Mud Pit	Retardant/Mud Pit	39° 57.271' N	111° 47.295' W
Bald Mountain	Water Tank	Irrigation Reservoir	39° 57.271' N	111° 47.295' W
Bald Mountain	Incident Command Post	Helispot	40° 1.713' N	111° 40.384' W
Bald Mountain	Incident Command Post	Bald Mtn. ICP	40° 01.679' N	111° 43.782' W
Pole Creek	Camp	Sheep Creek	39° 59.494' N	111° 18.520' W
Pole Creek	Dip Site	Salt Creek Dip	39° 47.443' N	111° 40.713' W
Pole Creek	Dip Site	Red Roof Dip	39° 52.230' N	111° 31.430' W
Pole Creek	Dip Site	Payson Lakes	39° 56.045' N	111° 38.378' W
Pole Creek	Dip Site	Spring Dip	40° 00.327' N	111° 44.712' W
Pole Creek	Dip Site	Hart Dip	40° 01.160' N	111° 36.380' W
Pole Creek	Dip Site	Loafer Dip	40° 01.116' N	111° 38.343' W
Pole Creek	Dip Site		40° 1.978' N	111° 40.449' W
Pole Creek	Dip Site		40° 1.896' N	111° 43.425' W
Pole Creek	Dip Site		40° 1.900' N	111° 30.930' W
Pole Creek	Dip Site		40° 04.270' N	111° 35.952' W
Pole Creek	Drop Point	DP-60	39° 55.462' N	111° 32.655' W
Pole Creek	Drop Point	DP-45	40° 1.758' N	111° 30.310' W
Pole Creek	Drop Point	DP-56	39° 59.845' N	111° 42.637' W
Pole Creek	Drop Point	DP-33	40° 08.355' N	111° 24.582' W
Pole Creek	Drop Point	DP-30	40° 02.567' N	111° 32.807' W
Pole Creek	Drop Point	DP-35	40° 04.202' N	111° 26.132' W
Pole Creek	Drop Point	DP-31	40° 8.938' N	111° 33.458' W
Pole Creek	Drop Point	DP-32	40° 9.981' N	111° 29.610' W
Pole Creek	Drop Point	DP-65	39° 53.618' N	111° 23.732' W
Pole Creek	Drop Point	DP-70	39° 51.295' N	111° 25.257' W
Pole Creek	Drop Point	DP-80	39° 48.306' N	111° 40.864' W
Pole Creek	Helispot	H-5	39° 51.710' N	111° 31.720' W
Pole Creek	Helispot	H-3	39° 49.105' N	111° 41.823' W
Pole Creek	Helispot	H-11	39° 53.683' N	111° 29.574' W
Pole Creek	Helispot	H-13	40° 00.053' N	111° 39.445' W
Pole Creek	Helispot	H-19	39° 59.227' N	111° 43.795' W
Pole Creek	Incident Command Post	Pole Creek	40° 06.170' N	111° 39.217' W
Pole Creek	Mobile Weather Unit	Spanish Fork Peak	40° 4.510' N	111° 32.130' W
Pole Creek	Mobile Weather Unit	Diamond	40° 4.320' N	111° 24.570' W
Pole Creek	Mobile Weather Unit	Woodland Hills	40° 0.130' N	111° 36.450' W
Pole Creek	Repeater	CMD 7	39° 58.570' N	111° 36.950' W
Pole Creek	Repeater	CMD 8	40° 01.685' N	111° 22.206' W
Pole Creek	Repeater	CMD 7	39° 51.880' N	111° 41.232' W
Pole Creek	Repeater	CMD 9	40° 16.264' N	111° 17.774' W
Pole Creek	Sling Site	Trail Sling	39° 47.697' N	111° 37.959' W
Pole Creek	Sling Site	Fork Sling	39° 47.658' N	111° 38.473' W
Pole Creek	Sling Site	Hilltop Sling	39° 49.115' N	111° 36.240' W
Pole Creek	Water Source		40° 5.277' N	111° 28.295' W
Pole Creek	Water Tank		40° 2.663' N	111° 32.697' W
Pole Creek	Value at Risk	Diamond Fork Guard Station	40° 09.518' N	111° 19.741' W
Pole Creek	Value at Risk	Covered Bridge	40° 02.679' N	111° 32.389' W

