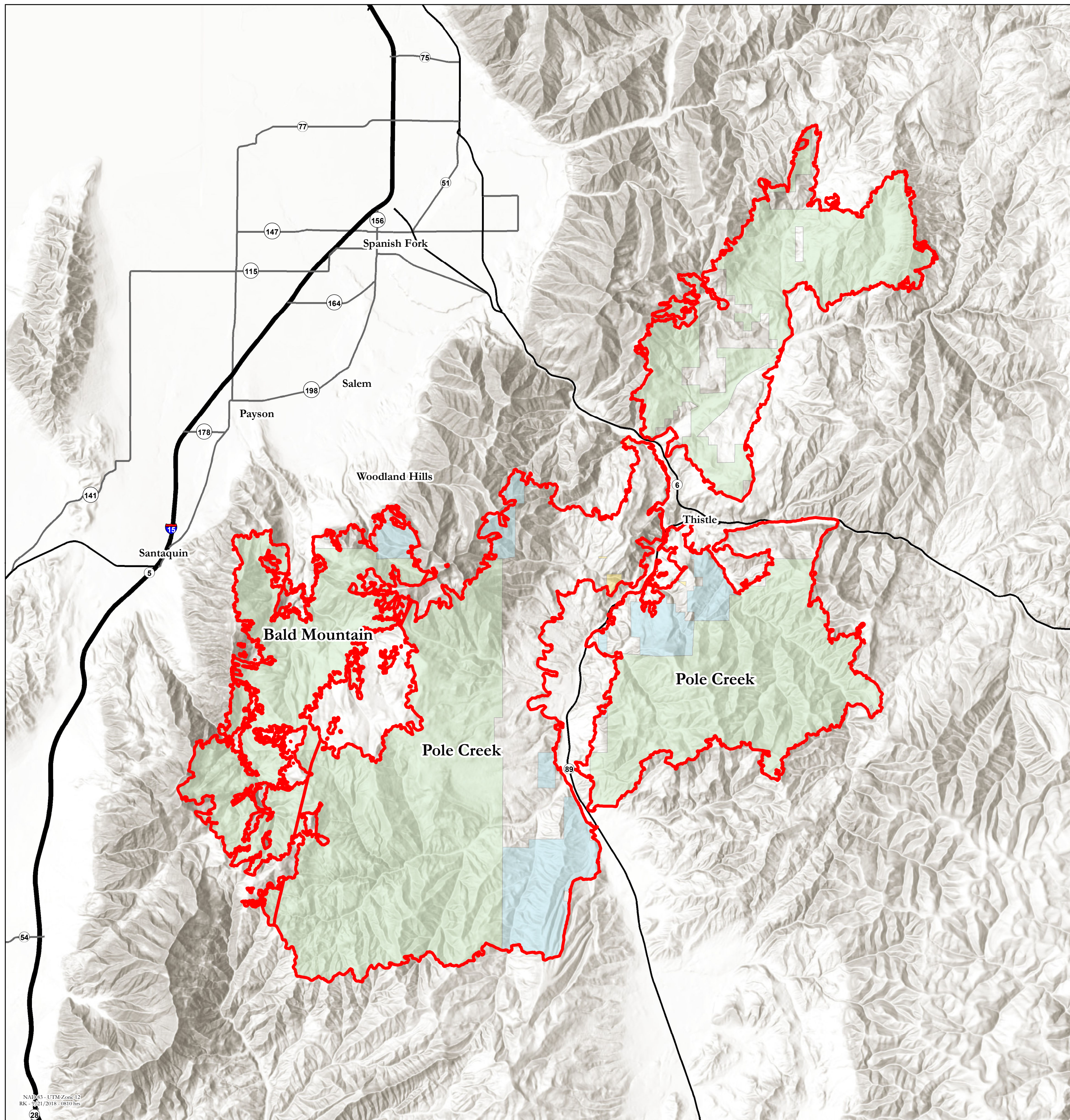
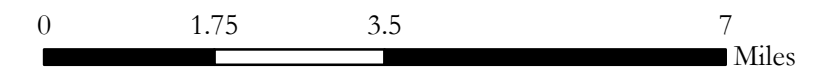
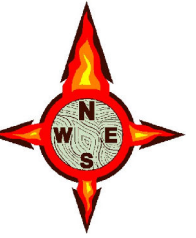


# Ownership Map Pole Creek & Bald Mountain Fires UT-UWF-971/892



September 21, 2018

Acres as of 9/20/18 2329 hrs



### Legend

- Wildfire Daily Fire Perimeter
- Bureau of Land Management
- US Forest Service
- State
- Private
- Interstates
- US Highways
- State Highways

| Cumulative                |                |               |
|---------------------------|----------------|---------------|
| Ownership                 | Acres          | Percent       |
| Bureau of Land Management | 166            | 0.1%          |
| State                     | 9,708          | 8.3%          |
| Private                   | 24,083         | 20.7%         |
| US Forest Service         | 82,504         | 70.8%         |
| <b>Total</b>              | <b>116,461</b> | <b>100.0%</b> |
|                           |                |               |
| Pole Creek                |                |               |
| Ownership                 | Acres          | Percent       |
| Bureau of Land Management | 166            | 0.2%          |
| State                     | 8,968          | 9.1%          |
| Private                   | 23,562         | 23.9%         |
| US Forest Service         | 65,766         | 66.8%         |
| <b>Total</b>              | <b>98,462</b>  | <b>100.0%</b> |
|                           |                |               |
| Bald Mountain             |                |               |
| Ownership                 | Acres          | Percent       |
| Private                   | 521            | 2.9%          |
| State                     | 740            | 4.1%          |
| US Forest Service         | 16,738         | 93.0%         |
| <b>Total</b>              | <b>17,999</b>  | <b>100.0%</b> |