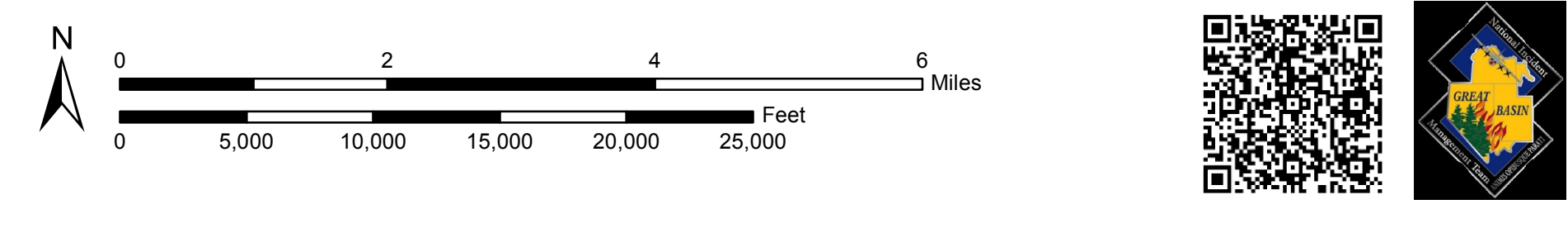
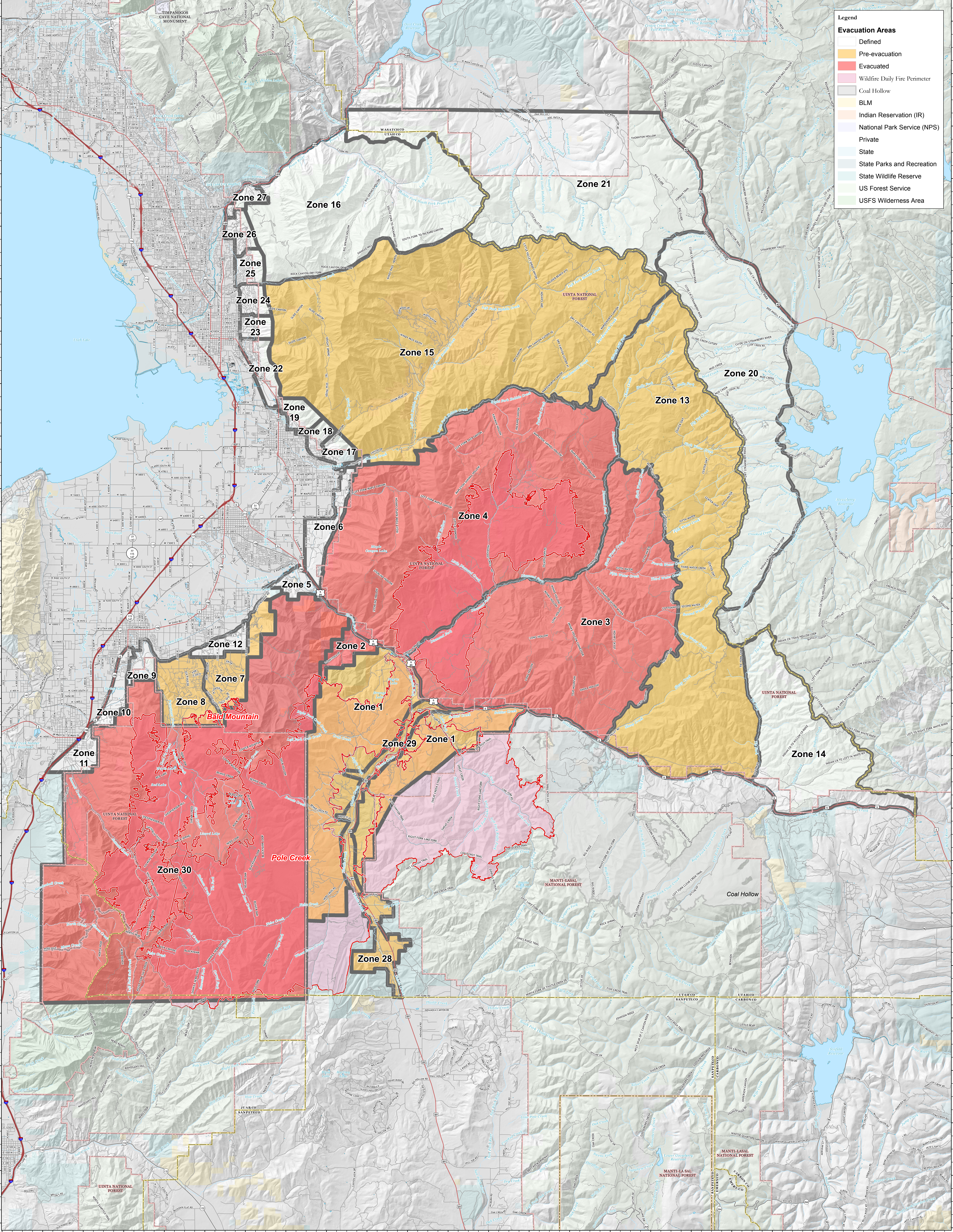


- Legend**
- Evacuation Areas**
- Defined
 - Pre-evacuation
 - Evacuated
 - Wildfire Daily Fire Perimeter
 - Coal Hollow
 - BLM
 - Indian Reservation (IR)
 - National Park Service (NPS)
 - Private
 - State
 - State Parks and Recreation
 - State Wildlife Reserve
 - US Forest Service
 - USFS Wilderness Area



Pole Creek and Bald Mountain - UT-UWF-971/892 - Evacuation Map
 Sept. 22, 2018
 Pole Creek = 99,693 acres, Bald Mt. = 18,550 acres as of 9/21/18 2311 hrs