

# Pole Creek & Bald Mtn. Pilot Map

UT-UWF-971/892  
September 25, 2018  
Day Shift

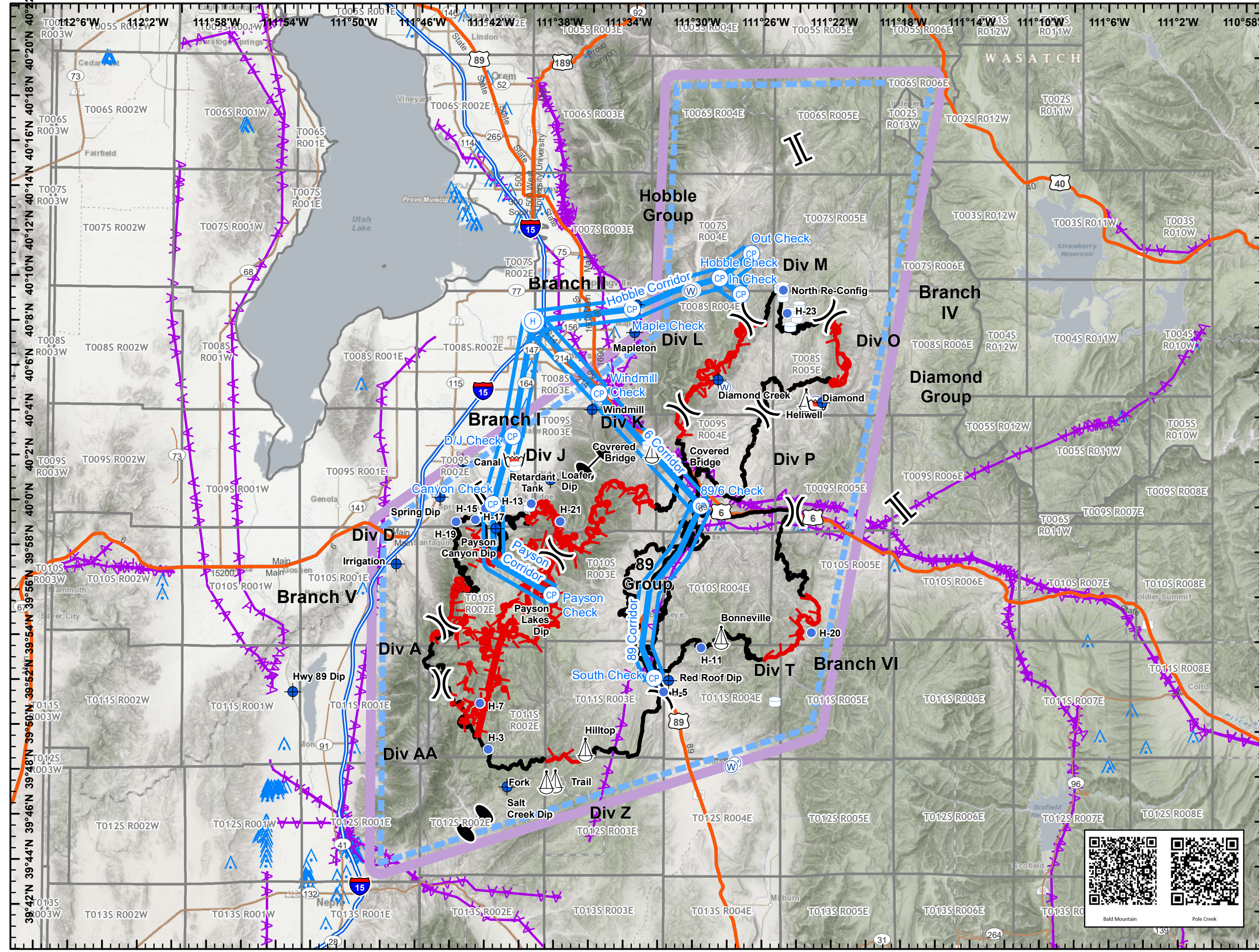
Pole Creek = 101,843; Bald Mountain = 18,600 acres as of 09/24/18 at 2022 MDT

- TFR 09/22/2018
- Corridor
- Township/Range
- Dip Site
- Helispot
- Incident Command Post
- Retardant/Mud Pit
- Sling Site
- Water Source
- Water Tank
- Division Break
- Branch Break
- Zone Break
- Uncontrolled Fire Edge
- Completed Line
- Electrical Lines
- Single Obstructions (>= 1000 Ft AGL)
- Group Obstructions (>= 1000 Ft AGL)
- Single Obstructions (< 1000 Ft AGL)
- Group Obstructions (< 1000 Ft AGL)

NAD 83  
UTM Zone 12

Miles

DW - GB#1  
9/25/2018  
0501



Pole Creek and Bald Mountain Fires UT-UWF-971/892			
Coordinate Point Table			
9/25/2018 0426			
Type	Label	Lat WGS84	Long WGS84
Camp	Ponderosa	39° 46.389' N	111° 42.982' W
Camp	Sawtooth	39° 59.341' N	111° 43.267' W
Camp	Sheep Creek	39° 59.493' N	111° 18.519' W
Camp	Warm Springs	39° 59.922' N	111° 42.687' W
Check Point	89/6 Check	40° 00.000' N	111° 29.632' W
Check Point	Canyon Check	40° 00.012' N	111° 41.670' W
Check Point	D/J Check	40° 03.040' N	111° 40.557' W
Check Point	Hobble Check	40° 10.143' N	111° 28.603' W
Check Point	In Check	40° 09.430' N	111° 27.363' W
Check Point	Maple Check	40° 08.745' N	111° 33.679' W
Check Point	Out Check	40° 11.236' N	111° 26.782' W
Check Point	Payson Check	39° 55.995' N	111° 38.233' W
Check Point	South Check	39° 52.315' N	111° 32.280' W
Check Point	Windmill Check	40° 04.978' N	111° 35.557' W
Configuration	North Re-Config	40° 09.625' N	111° 24.907' W
Dip Site	Bartholomew Park	40° 08.955' N	111° 33.420' W
Dip Site	Canal	40° 01.896' N	111° 43.425' W
Dip Site	Covered Bridge	40° 01.900' N	111° 30.930' W
Dip Site	Diamond Creek	40° 05.613' N	111° 28.650' W
Dip Site	Hwy 89 Dip	39° 51.589' N	111° 53.149' W
Dip Site	Irrigation	39° 57.326' N	111° 47.230' W
Dip Site	Loafer Dip	40° 01.116' N	111° 38.343' W
Dip Site	Mapleton	40° 07.705' N	111° 33.522' W
Dip Site	Payson Canyon Dip	39° 58.950' N	111° 41.479' W
Dip Site	Payson Lakes Dip	39° 56.044' N	111° 38.377' W
Dip Site	Red Roof Dip	39° 52.230' N	111° 31.429' W
Dip Site	Salt Creek Dip	39° 47.443' N	111° 40.713' W
Dip Site	Spring Dip	40° 00.327' N	111° 44.712' W
Dip Site	Windmill	40° 04.270' N	111° 35.952' W
Dip Site		40° 01.978' N	111° 40.448' W
Drop Point	DP-10	40° 00.130' N	111° 42.241' W
Drop Point	DP-12	39° 59.446' N	111° 41.968' W
Drop Point	DP-15	39° 58.668' N	111° 41.482' W
Drop Point	DP-2	39° 56.002' N	111° 45.779' W
Drop Point	DP-20	39° 59.891' N	111° 39.788' W
Drop Point	DP-23	40° 02.937' N	111° 37.619' W
Drop Point	DP-30	40° 02.566' N	111° 32.806' W
Drop Point	DP-31	40° 08.938' N	111° 33.458' W
Drop Point	DP-32	40° 09.980' N	111° 29.609' W
Drop Point	DP-33	40° 08.355' N	111° 24.582' W
Drop Point	DP-34	40° 09.283' N	111° 19.893' W
Drop Point	DP-35	40° 04.201' N	111° 26.131' W
Drop Point	DP-37	40° 07.690' N	111° 25.900' W
Drop Point	DP-39	40° 05.340' N	111° 27.030' W
Drop Point	DP-45	40° 01.758' N	111° 30.309' W
Drop Point	DP-5	39° 57.632' N	111° 46.570' W
Drop Point	DP-55	39° 59.845' N	111° 29.637' W
Drop Point	DP-56	39° 58.773' N	111° 30.208' W
Drop Point	DP-6	39° 57.892' N	111° 46.006' W
Drop Point	DP-60	39° 55.462' N	111° 32.655' W
Drop Point	DP-65	39° 53.617' N	111° 23.731' W
Drop Point	DP-7	39° 59.172' N	111° 45.616' W
Drop Point	DP-70	39° 51.295' N	111° 25.257' W
Drop Point	DP-77	39° 48.631' N	111° 38.478' W
Drop Point	DP-80	39° 48.305' N	111° 40.864' W
Helibase	Spanish Fork Helibase	40° 08.182' N	111° 39.430' W
Helispot	H-11	39° 53.683' N	111° 29.574' W
Helispot	H-13	40° 00.052' N	111° 39.445' W
Helispot	H-15	39° 59.833' N	111° 42.097' W
Helispot	H-17	39° 59.317' N	111° 42.679' W
Helispot	H-19	39° 59.227' N	111° 43.795' W
Helispot	H-20	39° 54.382' N	111° 23.193' W
Helispot	H-21	39° 59.269' N	111° 37.770' W
Helispot	H-23	40° 08.592' N	111° 24.675' W
Helispot	H-3	39° 49.105' N	111° 41.823' W
Helispot	H-5	39° 51.709' N	111° 31.720' W
Helispot	H-7	39° 51.156' N	111° 42.328' W
Incident Command Post	Bald Mtn. ICP	40° 01.678' N	111° 43.781' W
Incident Command Post	Pole Creek	40° 06.169' N	111° 39.216' W
Mobile Weather Unit	Diamond	40° 04.530' N	111° 24.954' W
Mobile Weather Unit	Spanish Fork Peak	40° 04.848' N	111° 32.220' W
Mobile Weather Unit	Woodland Hills	40° 00.130' N	111° 38.449' W
Repeater	CMD-7	39° 51.132' N	111° 42.333' W
Repeater	CMD-8	40° 05.263' N	111° 49.368' W
Repeater	CMD-9	40° 15.678' N	111° 55.687' W
Repeater	PC CMD 10	40° 05.271' N	111° 31.666' W
Repeater	PC CMD 7	39° 58.570' N	111° 36.952' W
Repeater	PC CMD 8	40° 01.685' N	111° 22.206' W
Repeater	PC CMD 9	40° 16.264' N	111° 17.773' W
Retardant/Mud Pit	Retardant Tank	40° 01.978' N	111° 40.449' W
Retardant/Mud Pit		40° 04.636' N	111° 22.993' W
Sling Site	Bonneville	39° 54.139' N	111° 28.418' W
Sling Site	Covered Bridge	40° 02.411' N	111° 32.483' W
Sling Site	Diamond	40° 04.730' N	111° 23.553' W
Sling Site	Fork	39° 47.658' N	111° 38.473' W
Sling Site	Hilltop	39° 49.114' N	111° 36.240' W
Sling Site	Trail	39° 47.697' N	111° 37.958' W
Water Tank		39° 59.926' N	111° 39.557' W
Water Tank		40° 01.713' N	111° 40.384' W
Water Tank		40° 02.663' N	111° 32.697' W
Water Tank		40° 07.996' N	111° 24.498' W
Water Tank		40° 08.387' N	111° 24.108' W
Water Tank		40° 08.641' N	111° 24.494' W
Water Tank		40° 08.930' N	111° 23.990' W
Water Tank		40° 09.323' N	111° 24.915' W
Water Tank		40° 09.690' N	111° 25.087' W
Water Tank		40° 09.768' N	111° 24.941' W