

Pole Creek Bald Mtn IAP Map

Index

UT-UWF-000971
September 27, 2018
Day Shift

Pole Creek 101,895 acres;
Bald Mountain 18,605 acres
as of 9/25/2018 2338 MDT

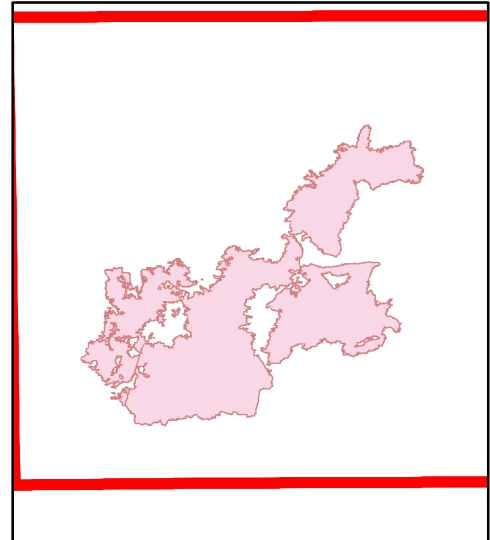
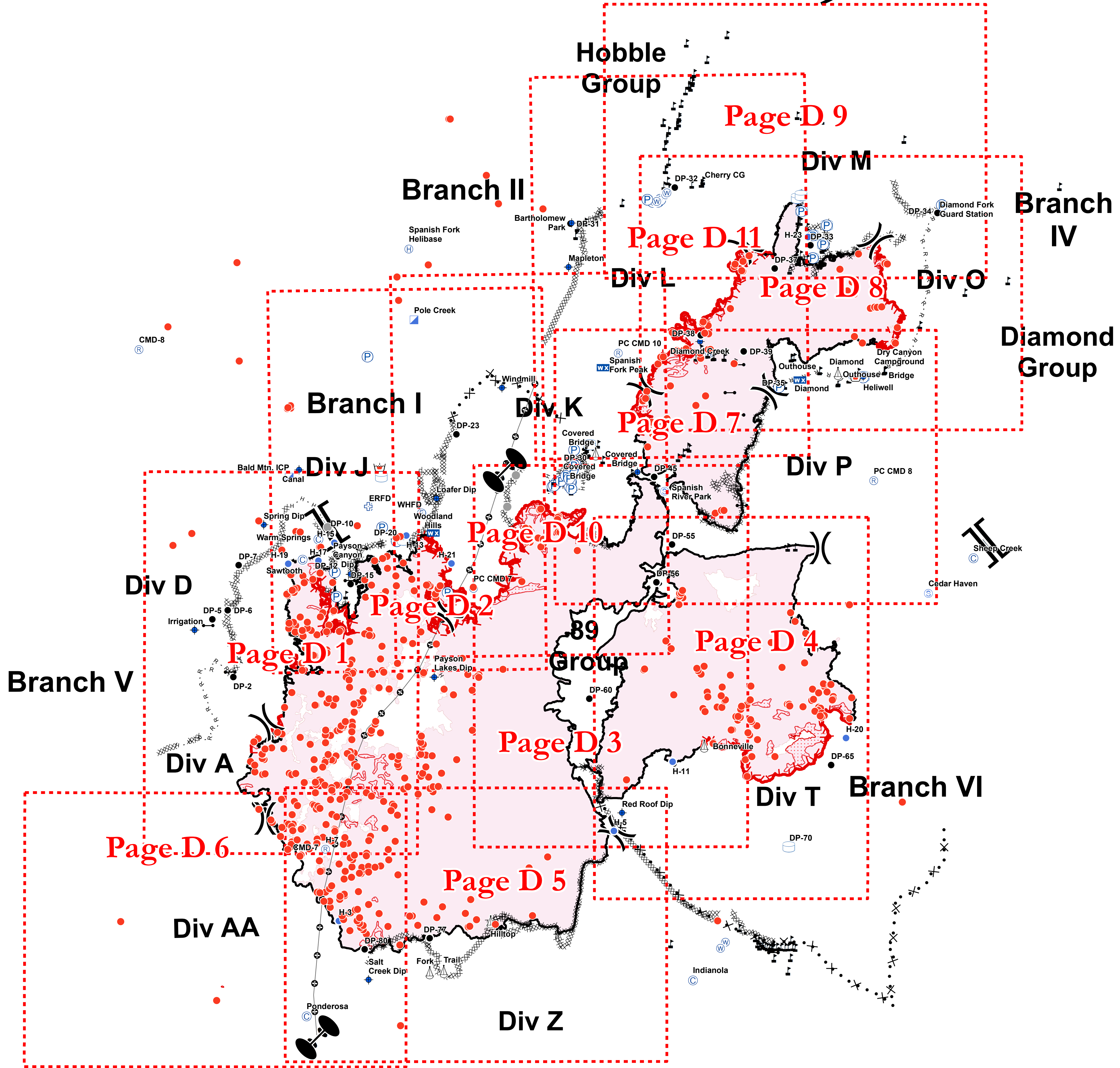
Page 12 of 12

Legend

- Camp
- ◆ Dip Site
- ⊕ Fire Station
- ⊕ First Aid Station
- Gate
- ⊕ Helibase
- Helispot
- ⊕ Incident Command Post
- WX Mobile Weather Unit
- ⊕ Pump
- ⊕ Repeater
- Retardant/Mud Pit
- ⊕ Sling Site
- ⊕ Staging Area
- ⊕ Water Source
- ⊕ Water Tank
- ⊕ Value at Risk
- Other
-) Division Break
- | Branch Break
- Zone Break
- Isolated Heat Source
- Intense Heat
- Scattered Heat
- Uncontrolled Fire Edge
- Completed Line
- XXXXX Completed Dozer Line
- H · H Completed Hand Line
- R · R Road as Completed Line
- X · Proposed Dozer Line
- ⊕ Air Tanker Retardant
- ⊕ Zone

CMD-9
PC CMD 11

PC CMD 9



Miles
0 0.5 1 1.5 2

NAD 83
UTM Zone 12

BM - GB#1
9/26/2018
2134

