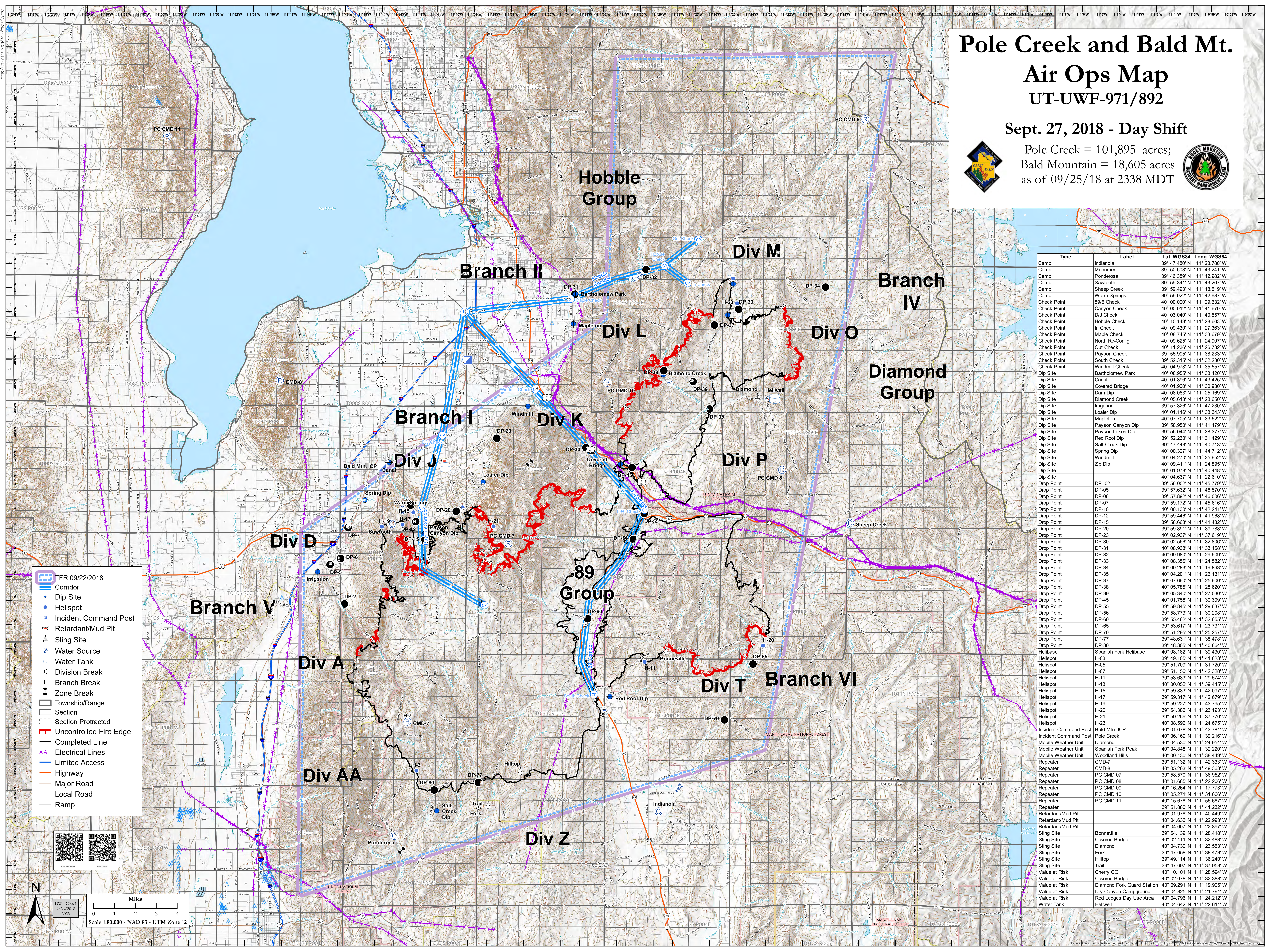


Pole Creek and Bald Mt. Air Ops Map UT-UWF-971/892

Sept. 27, 2018 - Day Shift

Pole Creek = 101,895 acres;
Bald Mountain = 18,605 acres
as of 09/25/18 at 2338 MDT



- TFR 09/22/2018
- Corridor
 - Dip Site
 - Helispot
 - Incident Command Post
 - Retardant/Mud Pit
 - Sling Site
 - Water Source
 - Water Tank
 - Division Break
 - Branch Break
 - Zone Break
 - Township/Range
 - Section
 - Section Protracted
 - Uncontrolled Fire Edge
 - Completed Line
 - Electrical Lines
 - Limited Access
 - Highway
 - Major Road
 - Local Road
 - Ramp

Type	Label	Lat. WGS84	Long. WGS84
Camp	Indianola	39° 47.480' N	111° 28.789' W
Camp	Monument	39° 50.603' N	111° 43.241' W
Camp	Ponderosa	39° 46.389' N	111° 42.982' W
Camp	Sawtooth	39° 59.341' N	111° 43.267' W
Camp	Sheep Creek	39° 59.493' N	111° 18.519' W
Camp	Warm Springs	39° 59.922' N	111° 42.687' W
Check Point	89/6 Check	40° 00.000' N	111° 29.632' W
Check Point	Canyon Check	40° 00.012' N	111° 41.670' W
Check Point	D/J Check	40° 03.040' N	111° 40.557' W
Check Point	Hobble Check	40° 10.143' N	111° 28.603' W
Check Point	In Check	40° 09.430' N	111° 27.363' W
Check Point	Maple Check	40° 08.745' N	111° 33.679' W
Check Point	North Re-Config	40° 09.625' N	111° 24.907' W
Check Point	Out Check	40° 11.236' N	111° 26.782' W
Check Point	Payson Check	39° 55.995' N	111° 38.233' W
Check Point	South Check	39° 52.315' N	111° 32.280' W
Check Point	Windmill Check	40° 04.978' N	111° 35.557' W
Dip Site	Bartholomew Park	40° 08.955' N	111° 33.420' W
Dip Site	Canal	40° 01.896' N	111° 43.425' W
Dip Site	Covered Bridge	40° 01.900' N	111° 30.930' W
Dip Site	Dam Dip	40° 08.083' N	111° 25.169' W
Dip Site	Diamond Creek	40° 05.613' N	111° 28.650' W
Dip Site	Irrigation	39° 57.326' N	111° 47.230' W
Dip Site	Loafer Dip	40° 01.161' N	111° 38.343' W
Dip Site	Mapleton	40° 07.705' N	111° 33.522' W
Dip Site	Payson Canyon Dip	39° 58.950' N	111° 41.479' W
Dip Site	Payson Lakes Dip	39° 56.044' N	111° 38.377' W
Dip Site	Red Roof Dip	39° 52.230' N	111° 31.429' W
Dip Site	Salt Creek Dip	39° 47.443' N	111° 40.713' W
Dip Site	Spring Dip	40° 00.327' N	111° 44.712' W
Dip Site	Windmill	40° 04.270' N	111° 35.952' W
Dip Site	Zip Dip	40° 09.411' N	111° 24.895' W
Dip Site		40° 01.978' N	111° 40.448' W
Drop Point	DP-02	40° 04.637' N	111° 22.610' W
Drop Point	DP-05	39° 57.632' N	111° 46.570' W
Drop Point	DP-06	39° 57.892' N	111° 46.006' W
Drop Point	DP-07	39° 59.172' N	111° 45.616' W
Drop Point	DP-10	40° 00.130' N	111° 42.241' W
Drop Point	DP-12	39° 59.446' N	111° 41.968' W
Drop Point	DP-15	39° 58.668' N	111° 41.482' W
Drop Point	DP-20	39° 59.891' N	111° 39.788' W
Drop Point	DP-23	40° 02.937' N	111° 37.619' W
Drop Point	DP-30	40° 02.566' N	111° 32.806' W
Drop Point	DP-31	40° 08.308' N	111° 33.458' W
Drop Point	DP-32	40° 09.380' N	111° 38.609' W
Drop Point	DP-33	40° 08.355' N	111° 24.582' W
Drop Point	DP-34	40° 09.283' N	111° 19.803' W
Drop Point	DP-35	40° 04.201' N	111° 26.131' W
Drop Point	DP-37	40° 07.690' N	111° 25.900' W
Drop Point	DP-38	40° 05.785' N	111° 28.620' W
Drop Point	DP-39	40° 05.340' N	111° 27.030' W
Drop Point	DP-45	40° 01.758' N	111° 30.309' W
Drop Point	DP-55	39° 59.845' N	111° 29.637' W
Drop Point	DP-56	39° 58.773' N	111° 30.208' W
Drop Point	DP-60	39° 55.462' N	111° 32.655' W
Drop Point	DP-65	39° 53.917' N	111° 23.731' W
Drop Point	DP-70	39° 51.295' N	111° 25.357' W
Drop Point	DP-77	39° 48.631' N	111° 38.478' W
Drop Point	DP-80	39° 48.305' N	111° 40.864' W
Helibase	Spanish Fork Helibase	40° 08.182' N	111° 39.430' W
Helispot	H-03	39° 49.105' N	111° 41.823' W
Helispot	H-05	39° 51.709' N	111° 31.720' W
Helispot	H-07	39° 51.156' N	111° 42.328' W
Helispot	H-11	39° 53.683' N	111° 29.574' W
Helispot	H-13	40° 00.052' N	111° 39.445' W
Helispot	H-15	39° 59.833' N	111° 42.097' W
Helispot	H-17	39° 59.317' N	111° 42.679' W
Helispot	H-19	39° 59.227' N	111° 43.795' W
Helispot	H-20	39° 54.382' N	111° 23.193' W
Helispot	H-21	39° 59.269' N	111° 37.770' W
Helispot	H-23	40° 08.592' N	111° 24.675' W
Incident Command Post	Bald Mtn. ICP	40° 01.678' N	111° 43.781' W
Incident Command Post	Pole Creek	40° 06.169' N	111° 39.216' W
Mobile Weather Unit	Diamond	40° 04.530' N	111° 24.954' W
Mobile Weather Unit	Spanish Fork Peak	40° 04.848' N	111° 32.220' W
Mobile Weather Unit	Woodland Hills	40° 00.130' N	111° 38.449' W
Repeater	CMD-7	39° 51.132' N	111° 42.333' W
Repeater	CMD-8	40° 05.263' N	111° 49.368' W
Repeater	PC CMD 07	39° 58.570' N	111° 38.952' W
Repeater	PC CMD 08	40° 01.885' N	111° 22.205' W
Repeater	PC CMD 09	40° 16.264' N	111° 17.773' W
Repeater	PC CMD 10	40° 05.271' N	111° 31.666' W
Repeater	PC CMD 11	40° 15.678' N	111° 55.687' W
Repeater		39° 51.880' N	111° 41.232' W
Retardant/Mud Pit		40° 01.978' N	111° 40.449' W
Retardant/Mud Pit		40° 04.636' N	111° 22.993' W
Retardant/Mud Pit		40° 04.607' N	111° 22.897' W
Sling Site	Bonneville	39° 54.139' N	111° 28.418' W
Sling Site	Covered Bridge	40° 02.411' N	111° 32.483' W
Sling Site	Diamond	40° 04.730' N	111° 23.553' W
Sling Site	Fork	39° 47.859' N	111° 38.473' W
Sling Site	Hilltop	39° 49.114' N	111° 36.240' W
Sling Site	Trail	39° 47.697' N	111° 37.958' W
Value at Risk	Cherry CG	40° 10.101' N	111° 28.594' W
Value at Risk	Covered Bridge	40° 02.678' N	111° 32.388' W
Value at Risk	Diamond Fork Guard Station	40° 09.291' N	111° 19.905' W
Value at Risk	Dry Canyon Campground	40° 04.825' N	111° 21.794' W
Value at Risk	Red Ledges Day Use Area	40° 04.796' N	111° 24.212' W
Value at Risk	Heliwell	40° 04.642' N	111° 22.611' W

Scale 1:80,000 - NAD 83 - UTM Zone 12

DW - GIB#1
09/26/2018
2023