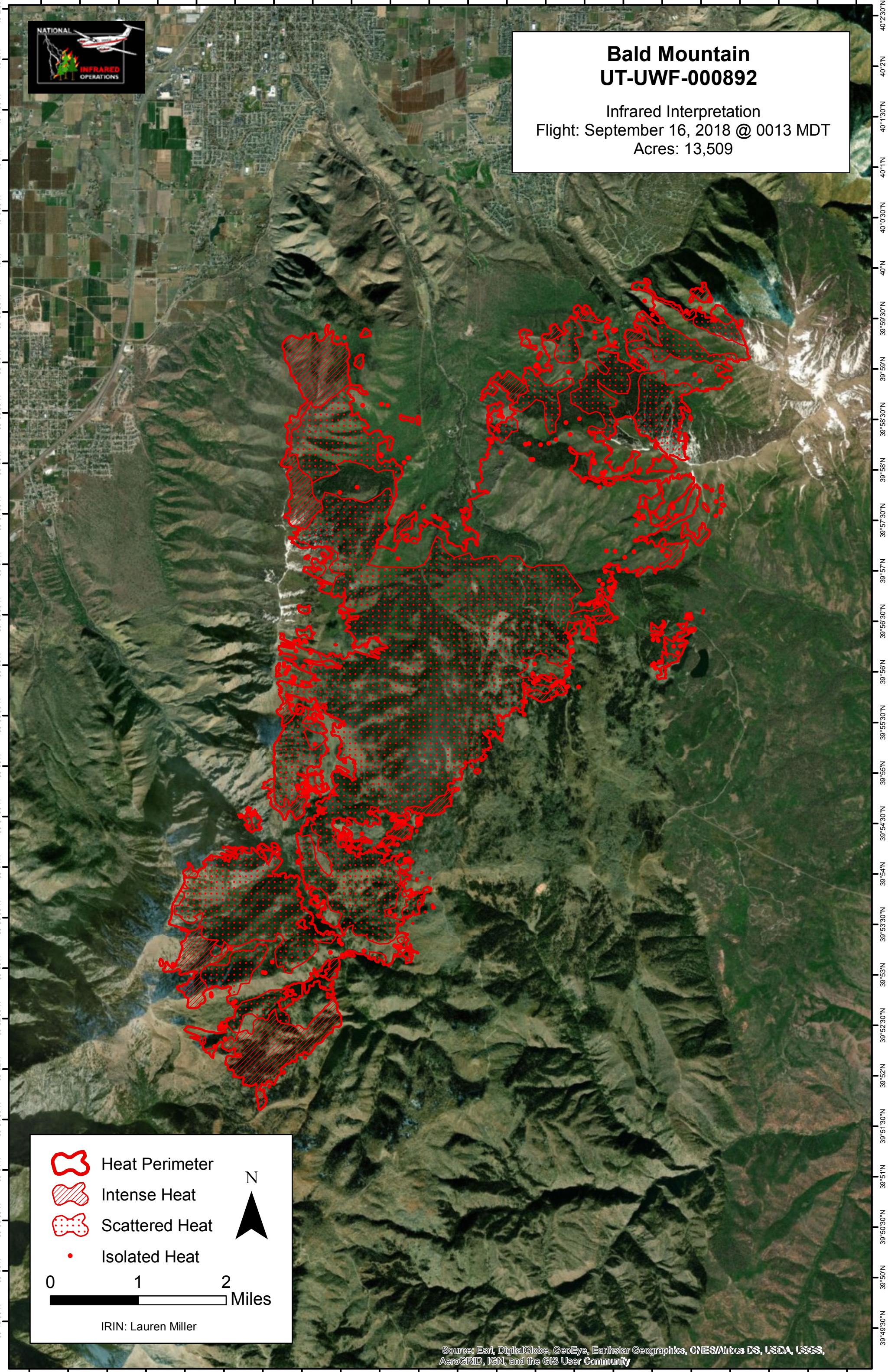






111°47'W 111°46'30"W 111°46'W 111°45'30"W 111°45'W 111°44'30"W 111°44'W 111°43'30"W 111°43'W 111°42'30"W 111°42'W 111°41'30"W 111°41'W 111°40'30"W 111°40'W 111°39'30"W 111°39'W 111°38'30"W 111°38'W 111°37'30"W 111°37'W 111°36'30"W



Bald Mountain
UT-UWF-000892
Infrared Interpretation
Flight: September 16, 2018 @ 0013 MDT
Acres: 13,509



-  Heat Perimeter
-  Intense Heat
-  Scattered Heat
-  Isolated Heat

N

0 1 2 Miles

IRIN: Lauren Miller

Source: Esri, DigitalGlobe, GeoEye, Earthstar Geographics, CNES/Airbus DS, USDA, USGS, AeroGRID, IGN, and the GIS User Community

111°47'W 111°46'30"W 111°46'W 111°45'30"W 111°45'W 111°44'30"W 111°44'W 111°43'30"W 111°43'W 111°42'30"W 111°42'W 111°41'30"W 111°41'W 111°40'30"W 111°40'W 111°39'30"W 111°39'W 111°38'30"W 111°38'W 111°37'30"W 111°37'W 111°36'30"W