

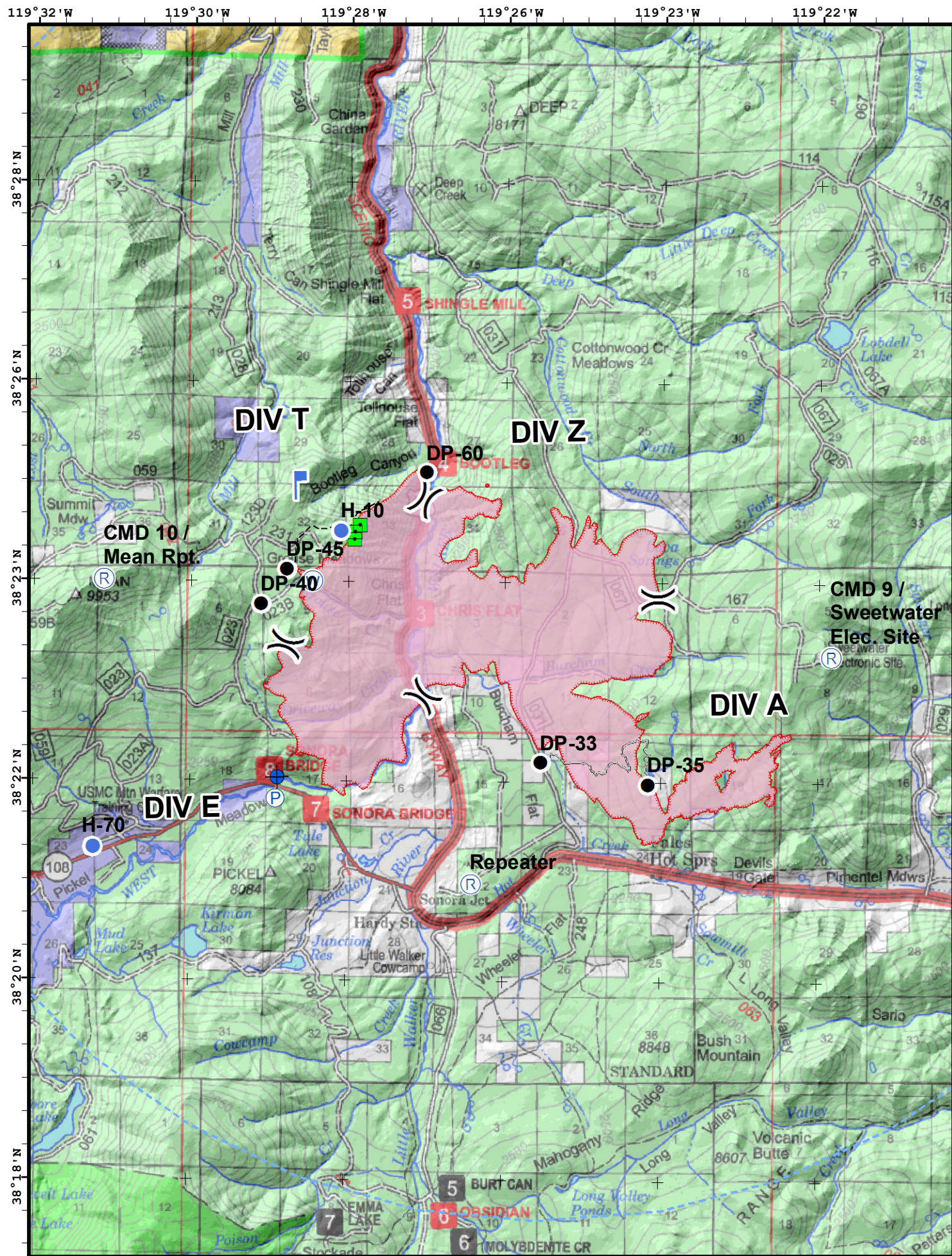
**Boot Fire**  
 NVHTF-030600  
 6873 Acres  
 9/8/2018

**AIR OPS**

**Team 5**

- Dip Site
  - Drop Point
  - Helispot
  - Incident Command Post
  - Lookout
  - Pump
  - Repeater
  - Water Source
  - Division Break
  - Uncontrolled Fire Edge
  - Access or Improved Road
  - Planned Fire Line
  - Wildfire Daily Fire Perimeter
- TFR\_8\_4082





Feature	Label	Latitude	Longitude
Dip Site		38° 22.040'	-119° 28.890'
Drop Point	DP-33	38° 22.204'	-119° 25.537'
Drop Point	DP-35	38° 21.987'	-119° 24.176'
Drop Point	DP-40	38° 23.780'	-119° 29.118'
Drop Point	DP-45	38° 24.128'	-119° 28.786'
Drop Point	DP-60	38° 25.103'	-119° 27.015'
Helispot	H-10	38° 24.514'	-119° 28.104'
Helispot	H-70	38° 21.335'	-119° 31.228'
Incident Command Post	Boot ICP	38° 32.706'	-119° 28.735'
Lookout		38° 24.964'	-119° 28.666'
Pump		38° 21.986'	-119° 28.912'
Repeater	CMD 10 / Mean Rpt.	38° 24.016'	-119° 31.117'
Repeater	CMD 9 / Sweetwater Elec. Site	38° 23.280'	-119° 21.855'
Repeater	Repeater	38° 20.985'	-119° 26.423'
Water Source		38° 24.014'	-119° 28.468'

Coordinate System: NAD 1983 UTM Zone 11N  
 NORTH Map Scale: 1:90,000, 1 inch = 7,500 feet

0 1.75 3.5 7 Miles