


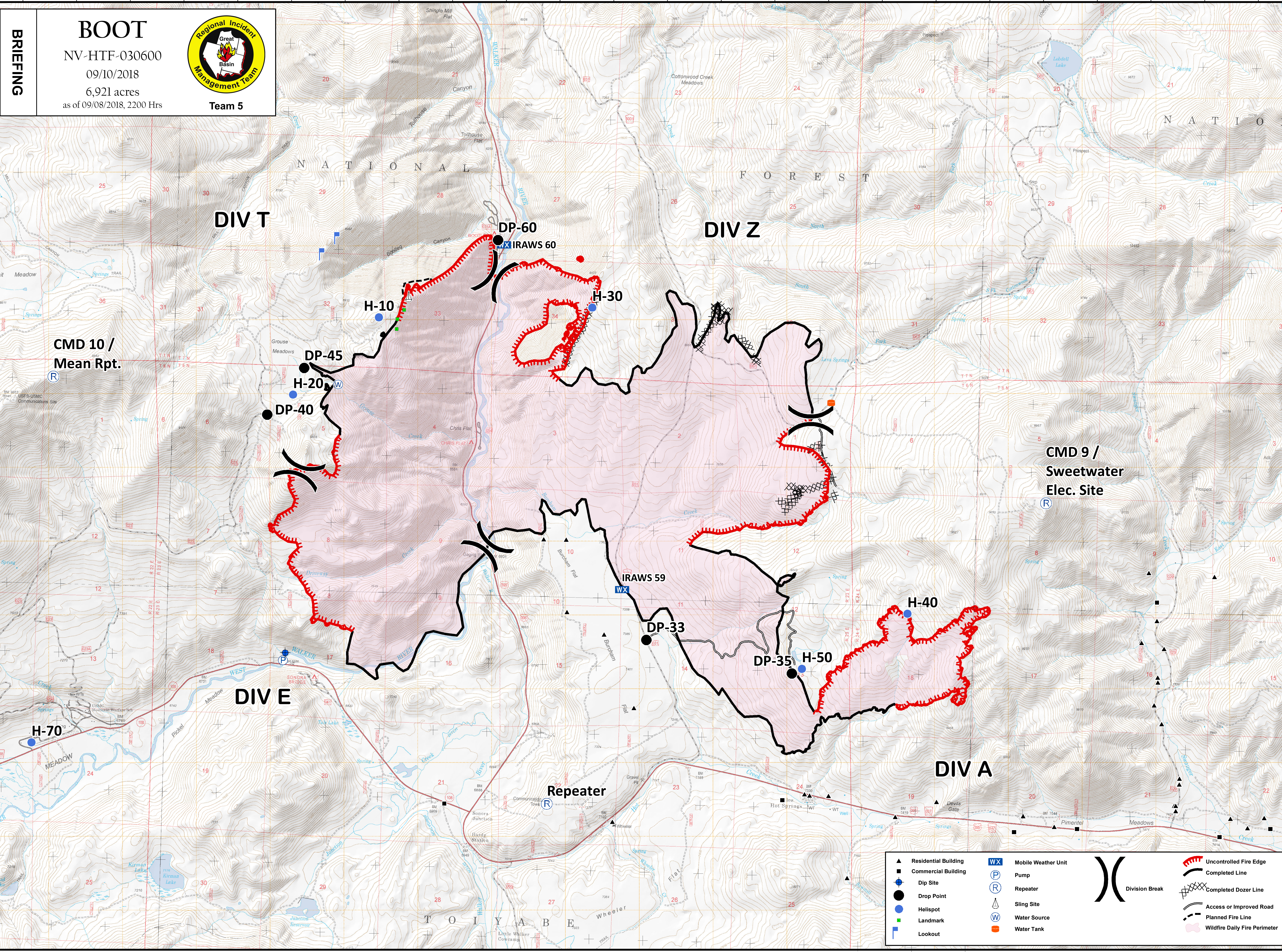
119°31'30"W 119°31'W 119°30'30"W 119°30'W 119°29'30"W 119°29'W 119°28'30"W 119°28'W 119°27'30"W 119°27'W 119°26'30"W 119°26'W 119°25'30"W 119°25'W 119°24'30"W 119°24'W 119°23'30"W 119°23'W 119°22'30"W 119°22'W 119°21'30"W 119°21'W 119°20'30"W 119°20'W

BRIEFING

BOOT
 NV-HTF-030600
 09/10/2018
 6,921 acres
 as of 09/08/2018, 2200 Hrs



Team 5



▲ Residential Building	WX Mobile Weather Unit	Uncontrolled Fire Edge
■ Commercial Building	P Pump	Completed Line
● Dip Site	R Repeater	Completed Dozer Line
● Drop Point	△ Sling Site	Access or Improved Road
● Helispot	W Water Source	Planned Fire Line
■ Landmark	Water Tank	Wildfire Daily Fire Perimeter
■ Lookout		

Coordinate System: NAD 1983 UTM Zone 11N
 Map Scale: 1:15,000, 1 inch = 1,250 feet

