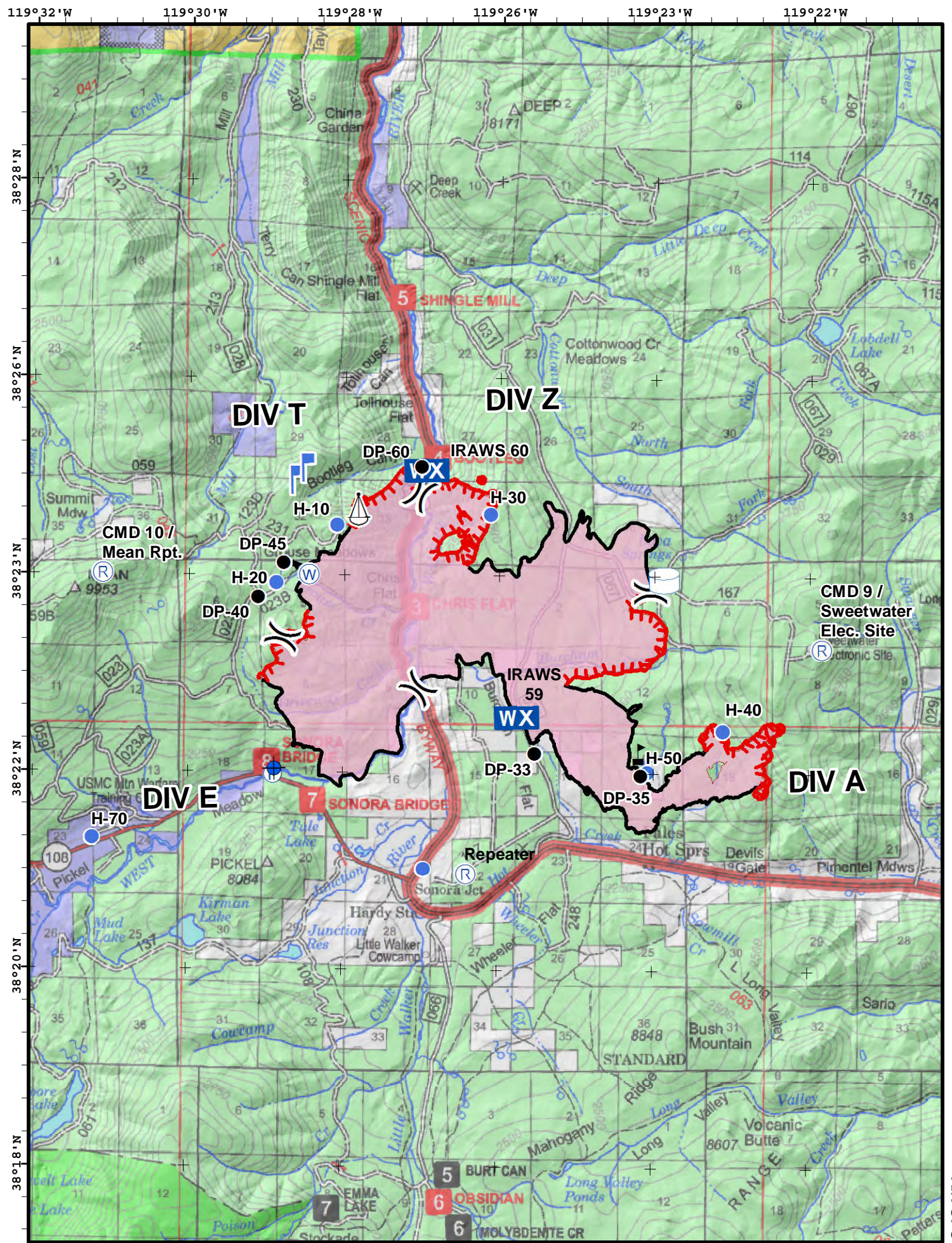


**Boot Fire**  
 NVHTF-030600  
 6961 Acres  
 9/11/2018

**AIR OPS**

	Dip Site		Water Source
	Drop Point		Water Tank
	Helispot		Value at Risk
	Incident Command Post		Division Break
	Lookout		Uncontrolled Fire Edge
	Mobile Weather Unit		Completed Line
	Pump		Wildfire Daily Fire Perimeter
	Repeater		TFR_8_4082
	Sling Site		



Feature	Label	Latitude	Longitude
Dip Site		38° 22.040'	-119° 28.890'
Drop Point	DP-33	38° 22.204'	-119° 25.537'
Drop Point	DP-35	38° 21.987'	-119° 24.176'
Drop Point	DP-40	38° 23.780'	-119° 29.118'
Drop Point	DP-45	38° 24.128'	-119° 28.786'
Drop Point	DP-60	38° 25.103'	-119° 27.015'
Helispot	H-10	38° 24.514'	-119° 28.104'
Helispot	H-20	38° 23.931'	-119° 28.884'
Helispot	H-30	38° 24.627'	-119° 26.122'
Helispot	H-40	38° 22.446'	-119° 23.116'
Helispot	H-50	38° 22.023'	-119° 24.085'
Helispot	H-60	38° 21.033'	-119° 26.967'
Helispot	H-70	38° 21.335'	-119° 31.228'
Incident Command Post	Boot ICP	38° 32.706'	-119° 28.735'
Lookout		38° 24.964'	-119° 28.666'
Lookout		38° 25.085'	-119° 28.529'
Mobile Weather Unit	IRAWS 59	38° 22.567'	-119° 25.777'
Mobile Weather Unit	IRAWS 60	38° 25.068'	-119° 26.960'
Pump		38° 21.986'	-119° 28.912'
Repeater	CMD 10 / Mean Rpt.	38° 24.016'	-119° 31.117'
Repeater	CMD 9 / Sweetwater Elec. Site	38° 23.280'	-119° 21.855'
Repeater	Repeater	38° 20.985'	-119° 26.423'
Sling Site		38° 24.670'	-119° 27.833'
Water Source		38° 24.014'	-119° 28.468'
Water Tank		38° 23.975'	-119° 23.877'